

# THE NEW NORTHBRIDGE ELEMENTARY SCHOOL

## WHITINSVILLE, MASSACHUSETTS



### SCHOOL BUILDING COMMITTEE MEETING

MAY 18, 2021



# AGENDA

1. Call to Order
2. Statement regarding Governor Baker's March 10, 2020 Order Suspending Certain Provisions of the Open Meeting Law
3. Attendance
4. Statement of Audio and Video Recording
5. Public Comment

Comments for this meeting may be emailed in advance of the 6:30 p.m. start time to [sbc@nps.org](mailto:sbc@nps.org).

*All comments will be recorded in the record, and all attempts will be made to mention them live during the meeting. Any emails received during the meeting before the public comment period ends will also be attempted to be mentioned.*

6. Approval of Minutes
7. Approval of Invoices and Commitments
8. FF&E Procurement Update
  - Equipment Award
  - Tractor and Snowplow Update
  - Outdoor Storage Building Update
9. Neighborhood Requests
10. Construction Update
  - Overlook Street Properties Update
  - Snack Shed Update
11. Time Capsule Working Group Update
12. Building Dedication Ceremony Working Group Update
13. New or Old Business
14. Committee Questions
15. Next Meeting: June 15, 2021
16. Adjourn



# EQUIPMENT STATUS UPDATE - PROCESS

- Last edits and adjustments to equipment orders based on school administration feedback
- “Best and Final” solicitations sent out to vendors for final bids
- Bids returned and collated
- Budgets for each equipment category have been updated
- Recommendation letters written along with P.O.s and written quotes attached



# FURNITURE, FIXTURES AND EQUIPMENT BUDGET SUMMARY

<b>TOTAL FF&amp;E BUDGET</b>	<b>\$1,648,000</b>	
<b><u>Furniture Cost (Final)</u></b>	<b><u>\$1,165,122</u></b>	<b><u>70.7%</u></b>
<b>Equipment Budget (Final)</b>	<b>\$482,878</b>	<b>29.3%</b>
<b><u>Equipment Cost - Total Quotes</u></b>	<b><u>\$421,315</u></b>	
<b>Delta - Under Budget</b>	<b>\$61,563</b>	



# EQUIPMENT BUDGET UPDATE – FINAL QUOTES BY CATEGORY

	<i>Furniture</i>	\$ 1,165,122.17
	<b>General Equipment</b>	<b>\$77,643.78</b>
	<b>Kitchen Smallwares</b>	<b>\$11,320.06</b>
	<b>Gymnasium Fitness Equipment</b>	<b>\$8,575.87</b>
	<b>OT/PT/Adaptive/Sp. Ed.</b>	<b>\$30,855.44</b>
	<b>Health Equipment</b>	<b>\$16,854.29</b>
	<b>Custodial/Maintenance Equipment</b>	<b>\$116,281.00</b>
	<b>Maker Space Equipment</b>	<b>\$22,355.78</b>
	<b>Art Equipment</b>	<b>\$33,387.91</b>
	<b>Music Equipment</b>	<b>\$29,121.70</b>
	<b>Library/A-V Room Equipment</b>	<b>\$796.50</b>
	<b>Contingency 5%</b>	<b>\$74,123.00</b>
	<b>Equipment Total</b>	<b>\$421,315.23</b>



# FIXTURES AND EQUIPMENT BUDGET TO ACTUAL BY CATEGORY

CATEGORY	%	TARGET BUDGET	%	ACTUAL BUDGET
General Equipment	28.0%	\$121,280	18.4%	\$77,644
Kitchen Smallwares	6.5%	\$28,154	2.7%	\$11,320
Gymnasium Fitness Equipment	4.5%	\$19,491	2.1%	\$8,576
OT/PT / Adaptive/ Sp.Ed.	4.0%	\$17,326	7.3%	\$30,855
Health Equipment	3.5%	\$15,160	4.0%	\$16,854
Custodial Equipment	34.5%	\$149,434	27.6%	\$116,281
Maker Space Equipment	2.5%	\$10,829	5.3%	\$22,356
Art Equipment	4.0%	\$17,326	7.9%	\$33,388
Music Equipment	7.5%	\$32,486	6.9%	\$29,122
Library/ A-V Room Equipment			0.2%	\$797
Contingency	5.0%	\$21,657	17.6%	\$74,123
<b>Equipment Total (Final)</b>	<b>100.0%</b>	<b>\$433,142</b>	<b>100%</b>	<b>\$421,315</b>



# FURNITURE, FIXTURES AND EQUIPMENT VOTE RECOMMENDATION



TOTAL FF&E BUDGET	\$1,648,000	
<u>Furniture Cost (Final)</u>	<u>\$1,165,122</u>	<u>70.7%</u>
Equipment Budget (Final)	\$482,878	29.3%
<u>Equipment Cost - Total Quotes</u>	<u>\$421,315</u>	
Delta - Under Budget	\$61,563	

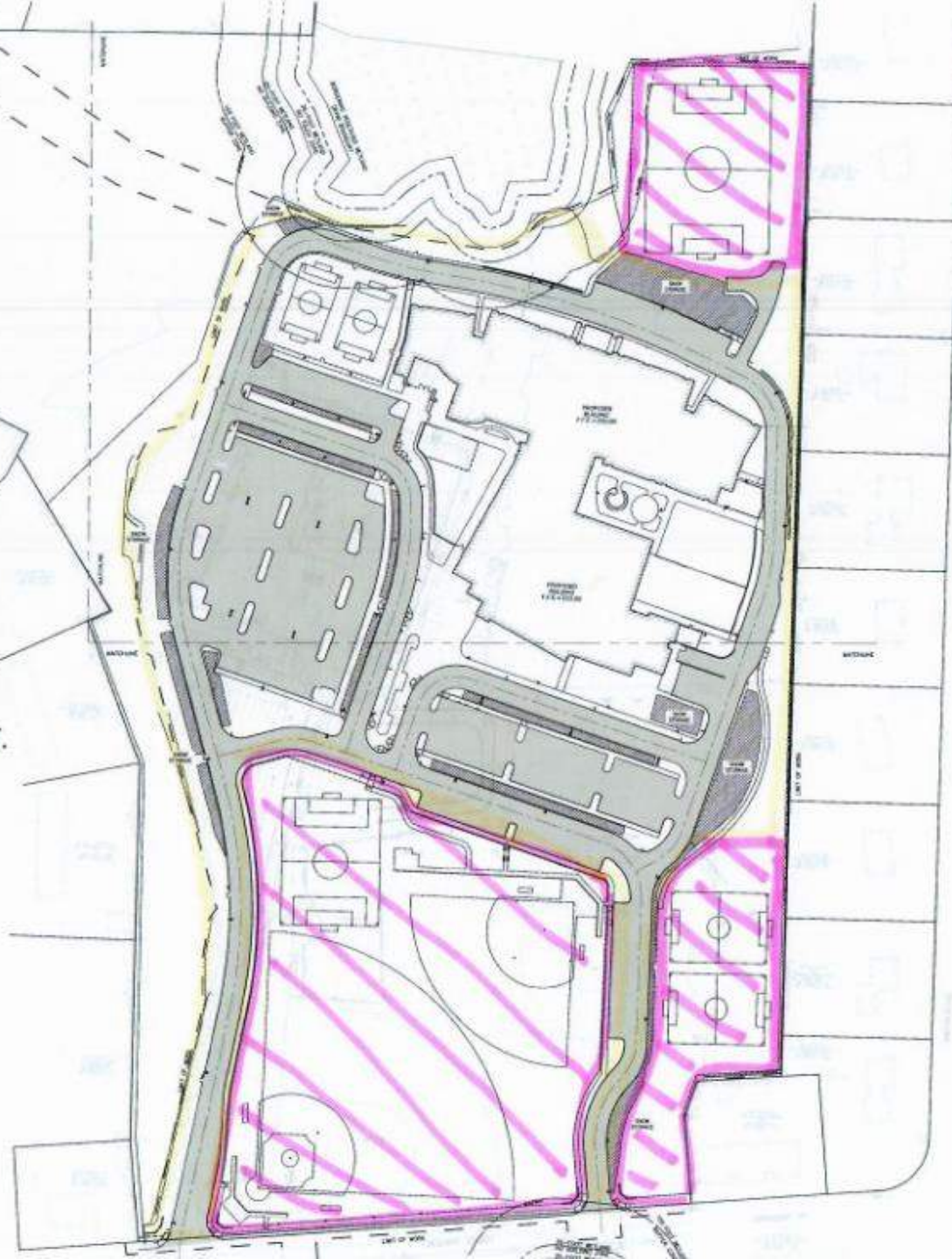
**D+W recommends the budget of at least \$421,315 for Equipment be approved and direct D+W to write purchase orders for equipment as specified.**





# MOWING PLAN

 - TOWN DPW  
 - SCHOOL DEPT.





# NEIGHBORHOOD REQUESTS

192 Mason Road

- Echo
- Pests
- Privacy
- Additional Trees
- Fence Height Extension



# CONSTRUCTION UPDATE



**FONTAINE BROS., INC.**

CONSTRUCTION MANAGERS  
GENERAL CONTRACTORS





# CONSTRUCTION UPDATE



Fontaine drone photo 4/19/21



# CONSTRUCTION UPDATE

C-Wing South  
cladding  
progress - 95%





# CONSTRUCTION UPDATE

C-Wing West  
cladding and  
sunshades  
complete and  
ready for  
timber canopy  
erection





# CONSTRUCT UPDATE

C-Wing West  
timber canopy  
erection –  
photo taken  
today!





# CONSTRUCTION UPDATE

A-Wing West  
& South  
phenolic and  
MCM cladding  
complete;  
site work  
ongoing





# CONSTRUCTION UPDATE



A-B Wing North phenolic and MCM cladding nearly complete;  
site work ongoing: walks, topsoil, site electrical, landscaping







# CONSTRUCTION UPDATE

Closing up the loading bays and other cladding in the East Courtyard





# CONSTRUCTION UPDATE

ELAs - Marmoleum flooring installation progress





# CONSTRUCTION UPDATE



Reading Nook,  
Level 2 ELA





# CONSTRUCTION UPDATE



Reading  
Nook,  
Level 3  
ELA

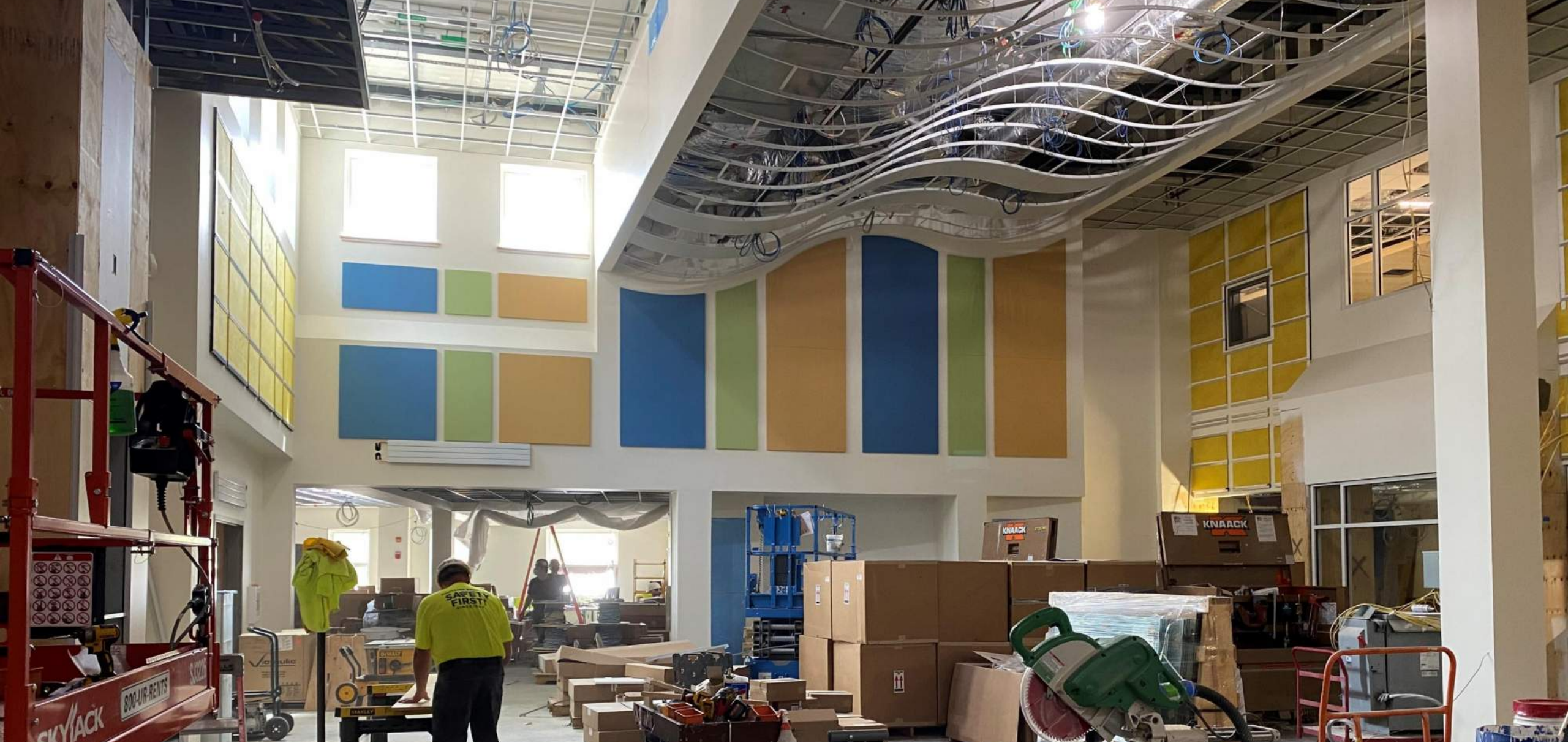






Media Center is taking shape **CONSTRUCTION UPDATE**





Café North finishes progress

**CONSTRUCTION UPDATE**





# CONSTRUCTION UPDATE

Café-Gym Entry Progress



# QUESTION AND ANSWER

