

# W. EDWARD BALMER SCHOOL

FEASIBILITY STUDY  
NORTHBRIDGE, MA

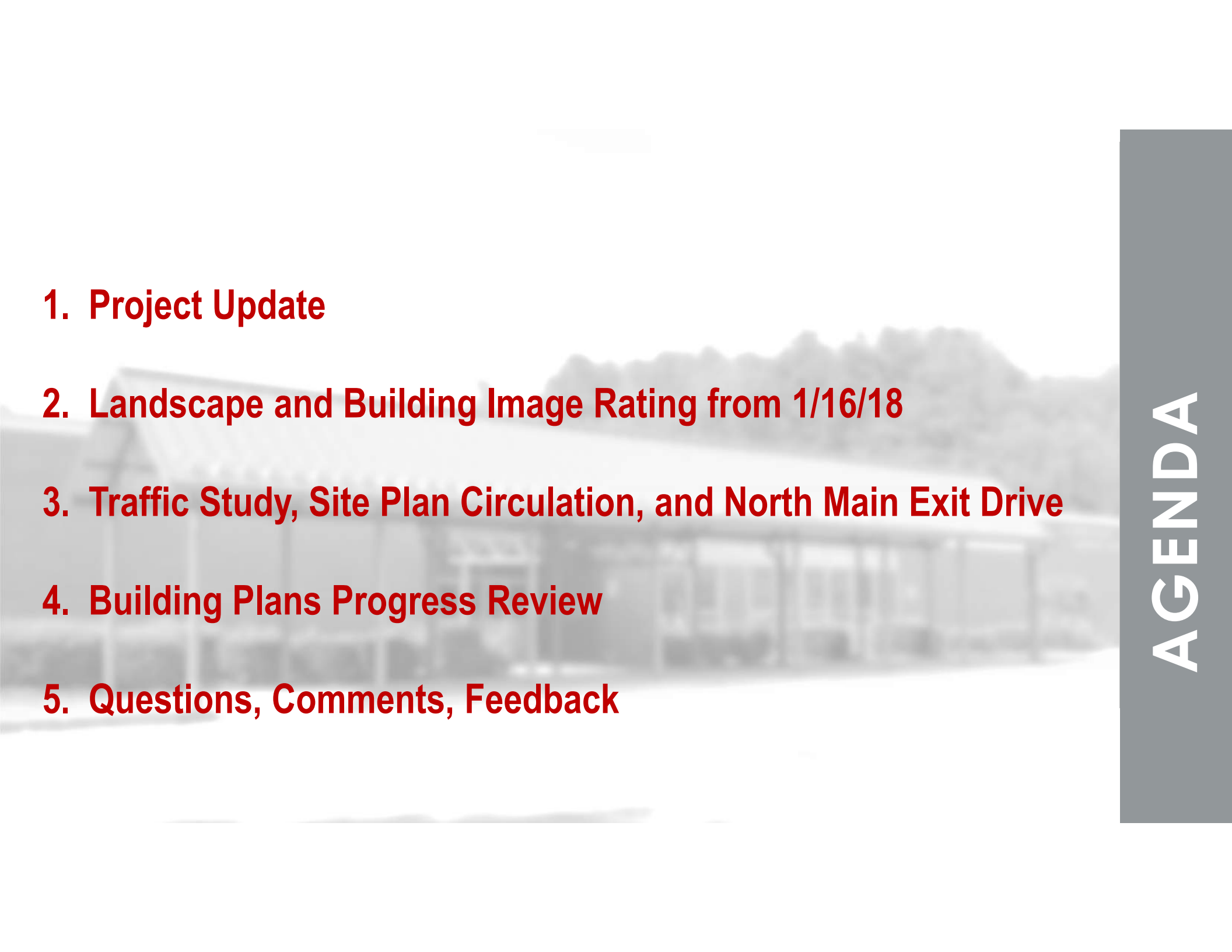
SCHOOL BUILDING COMMITTEE  
MEETING

JANUARY 30, 2018



Massachusetts School Building Authority  
*Funding Affordable, Sustainable, and Efficient Schools in Partnership with Local Communities*



- 
- 1. Project Update**
  - 2. Landscape and Building Image Rating from 1/16/18**
  - 3. Traffic Study, Site Plan Circulation, and North Main Exit Drive**
  - 4. Building Plans Progress Review**
  - 5. Questions, Comments, Feedback**

1.

PROJECT UPDATE

# PROJECT UPDATE

1. Consultants' Kick-Off meeting 1/17:
  - LEED energy efficiency plan tweaked to meet MSBA requirement
  - Site plan design discussions
2. MSBA: FAS Meeting 1/24 and PSR Conference Call 1/26:
  - Need to provide more description for utilization of Maker Spaces –  
how do they support the Education Plan, schedule, staffing?
3. Final Traffic Study Report 1/26 Distributed to SBC
  - Fate of North Main Street exit drive



*Questions?*

SMMA  
Project Management



# 2.

DESIGN IMAGES  
RATING TALLY

## SCORING COLOR CODE

**50+**

**top three bolded**

40+

30+

**DESIGN IMAGES PREFERENCE TALLY**



	Image Memo	1	2	3	4	5	CUMUL SCORE
1	Manassas ES, VA Entry Plaza	2	4	24			30
2	West Parish School, Gloucester, MA entry	1		3	28	15	47
3	New Sandy Hook School, CT rain garden	6	4		20		30
4	Manassas ES, VA Interior Courtyard ferns	1	14	6	4	5	30
5	Jones Whitsett/ Western MA yard		4	12	20	5	41
6	Manassas ES, VA Interior Courtyard gardens		2	9	16	20	47
7	Kompan play structure/synthetic surface		2	6	16	25	49
8	Wood play structure - Castle- older grades	5	6	12			23
9	Wood play structure ship - West Parish - wood fiber surf	4	2	12	12		30
10	Younger grades plastic play structure/synthetic surf.			6	16	30	52
11	Younger grades wooden play structure/wood fiber surf.	2	6	15		5	28
12	Accessible equip - lay-down swing	1		9	24	15	49
13	Accessible equip - roll-on merry go round			6	28	20	54
14	Accessible equip - ramp & bridge to activity zone			6	24	25	55
15	Accessible equip - rolling hand buttons/ wood fiber surface		6	12	20	5	43
16	Accessible equip - Woodland School/ramp (Kompan?)		2	6	20	25	53
17	Musical playground equipment		4		28	20	52
18	Hardscape with stenciled play games		4	9	8	30	51
19	Natural playground/ accessible slides/ using topo	1	4	21	8	5	39
20	Natural playground/ wooden members/ custom work	2	10	18			30
21	Natural playground/ "driftwood on beach"	2	12	12	4		30
22	New Sandy Hook School, CT interior courtyard/ amphithr	1	6	6	16	10	39
23	Outdoor CRs: grass amphi/wood bench/ stone circles		4	6	32	10	52
24	Outdoor Education: Kitchen Gardens/volunteer caveat		6	6	20	15	47
25	Special Ed/ Sensory Gardens/ Butterfly Gardens		4	12	16	15	47
26	Outdood Education: drainage basins & rain gardens	2	6	12	12	5	37
27	Outdoor Learning: Nature Trails development	3		6	12	25	46
28	Outdoor Fitness Gym: trail for Vail Field	4	8	12		5	29



# LANDSCAPE IMAGES



# Main Entry Plaza / Drop off

lantern announces entry





## Playground equipment – older grades



## Playground equipment – younger grades

technical play – absorptive surface



# Accessible playground equipment

12



14



13



15



# BUILDING IMAGES

	Image Memo	1	2	3	4	5	CUMUL SCORE
1	West Parish School - Contemporary but Timeless			8	28	20	54
2	New Sandy Hook - step down scale	3	6	18	4		31
3	New Sandy Hook - "happy cheerful inspiring"	3	6	18		5	32
4	New Sandy Hook - balance between safety & openness	2	4	8	20	10	42
5	Jones Whitsett/ Western MA/ Entry	2	18	8			26
6	JCJ - Burgess ES, CT Entry	2	2	15	16	5	40
7	JCJ - unknown ES, CT Entry	2	2	15	16	5	40
8	Clinton, MA ES - Neighborhood context		2	12	24	10	48
9	New Balmer PK-5 entry "factory" image side of entry	4	10	12	4		30
10	New Balmer PK-5 entry "factory" image front entry	3	12	9	4		28
11	Thompson ES, Arlington, MA, HMFH/ "happy, cheerful.."		6	15	18	10	47
12	New Balmer PK-5 entry "visual texture" side of entry	6	8		8		22
13	New Balmer PK-5 entry "visual texture" front entry	6	8		12		26
14	West Parish School - Massing used to mediate scale			6	36	15	57
15	West Parish School - building meets landscape			9	24	20	53
16	Jones Whitsett/ Western MA/ Side yard	2	2	8	24	10	44
17	West Parish School - back passage landscape			9	28	15	52
18	Hillside School, Needham/ base w/ lighter mall abv		6	15	8	15	44
19	Hillside School, Needham/ mess and void announce entry	2	4	12	12	10	40
20	Hillside School, Needham/ mess elements express SLCs	1	8	12	12	10	41
21	Hillside School, Needham/ bldg steps up two story entry		4	15	16	10	45
22	New Sandy Hook School/ rear courtyard/ outdoor learning		12	12	12		36
23	Unknown school/ stone piers	2	8	12	12		34
24	New Sandy Hook School/ rear courtyard/ stone walls			21	24		45
25	Field School, Weston MA internal courtyard steps	7	6	9			22
26	Field School, Weston MA internal courtyard landscape	7	6	9			22
27	Field School, Weston MA entry canopy	7	6	9			22
28	Unknown School/ courtyd w/ geometric, natural, color	4	6	12	12		34
29	ES, Sweden/ Outside-Inside/ natural light	6	8	6		5	25
30	Unknown School/ courtyd plain jane landscape		4	6	28	10	48
31	Unknown School/ courtyd fun w/ racetrack		2	9	28	10	49
32	French school, outdoor learning roof terrace	2	4	18	12		36
33	Wellington ES, Belmont MA - rich natural matts./sustain.	2	10	15		5	32
34	Wellington ES, Belmont MA - natural matts./scale issue	5	12	6			23
35	Estabrook School, Lexington MA - express program on ext.	2	4	15	16		37
36	Estabrook School, Lexington MA - announce entry	2	12	8	12		32
37	Estabrook School, Lexington MA - step massing, scale	2		24	12		38
38	Estabrook School, Lexington MA - light shelves, shading		4	18	16	5	43
39	Woodland School, Milford MA - facade pop-outs, color front	2		12	20	10	44
40	Woodland School, Milford MA - entry: void between solids	2		6	28	15	51
41	Woodland School, Milford MA - facade pop-outs, color rear	2		9	24	10	45







*Contemporary but timeless*



*Massing* used to mediate scale





How does the building meet the landscape?



*Questions?*

SMMA  
Project Management

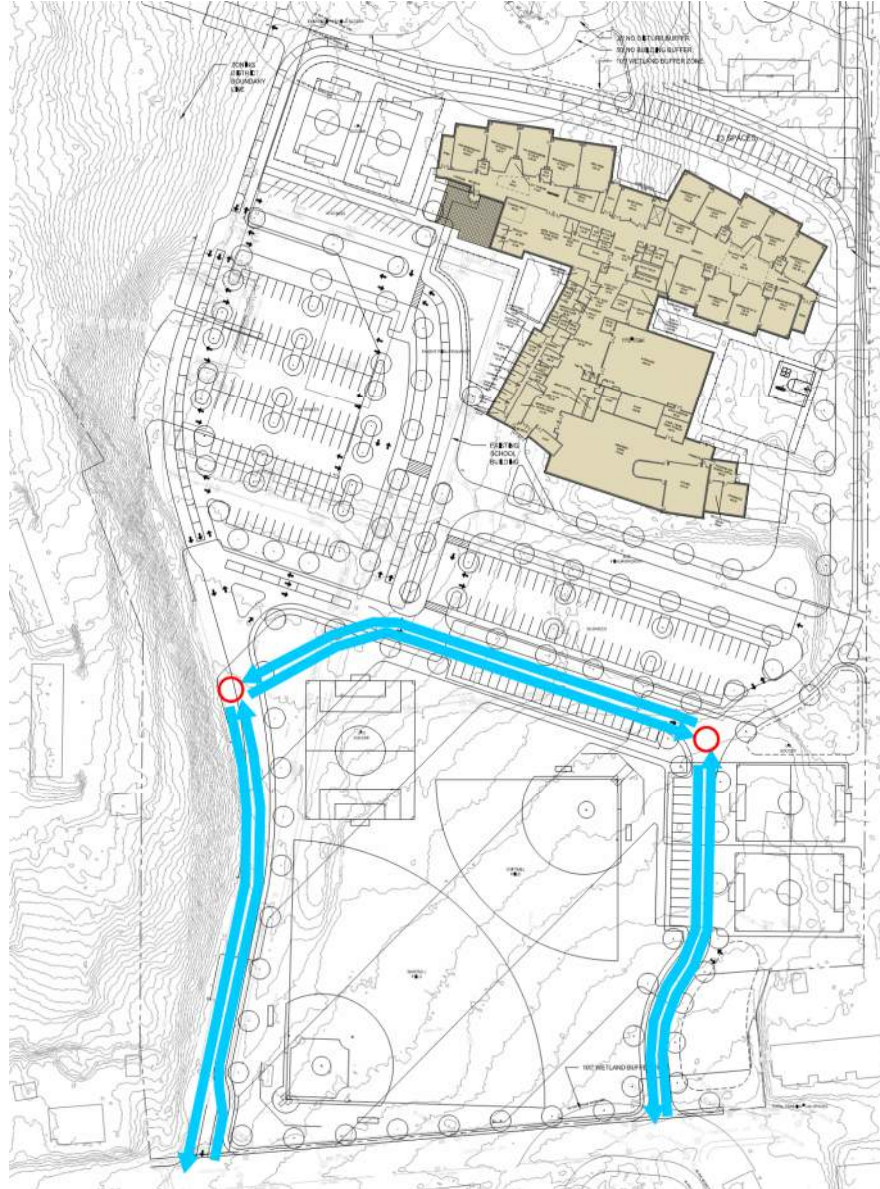


**3.**

**SITE & TRAFFIC  
REVIEW**

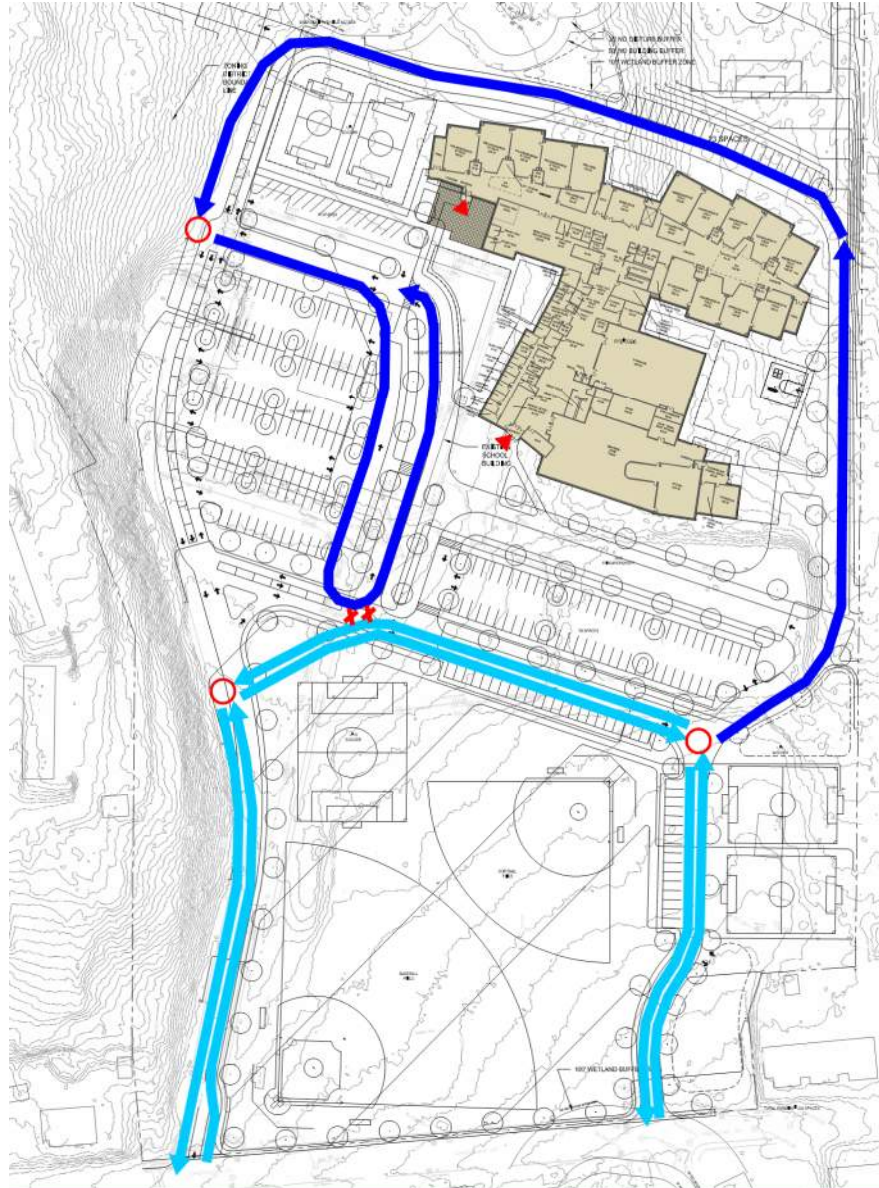


# SITE CIRCULATION



“PARK”  
VAIL FIELD  
CIRCULATION

# SITE CIRCULATION

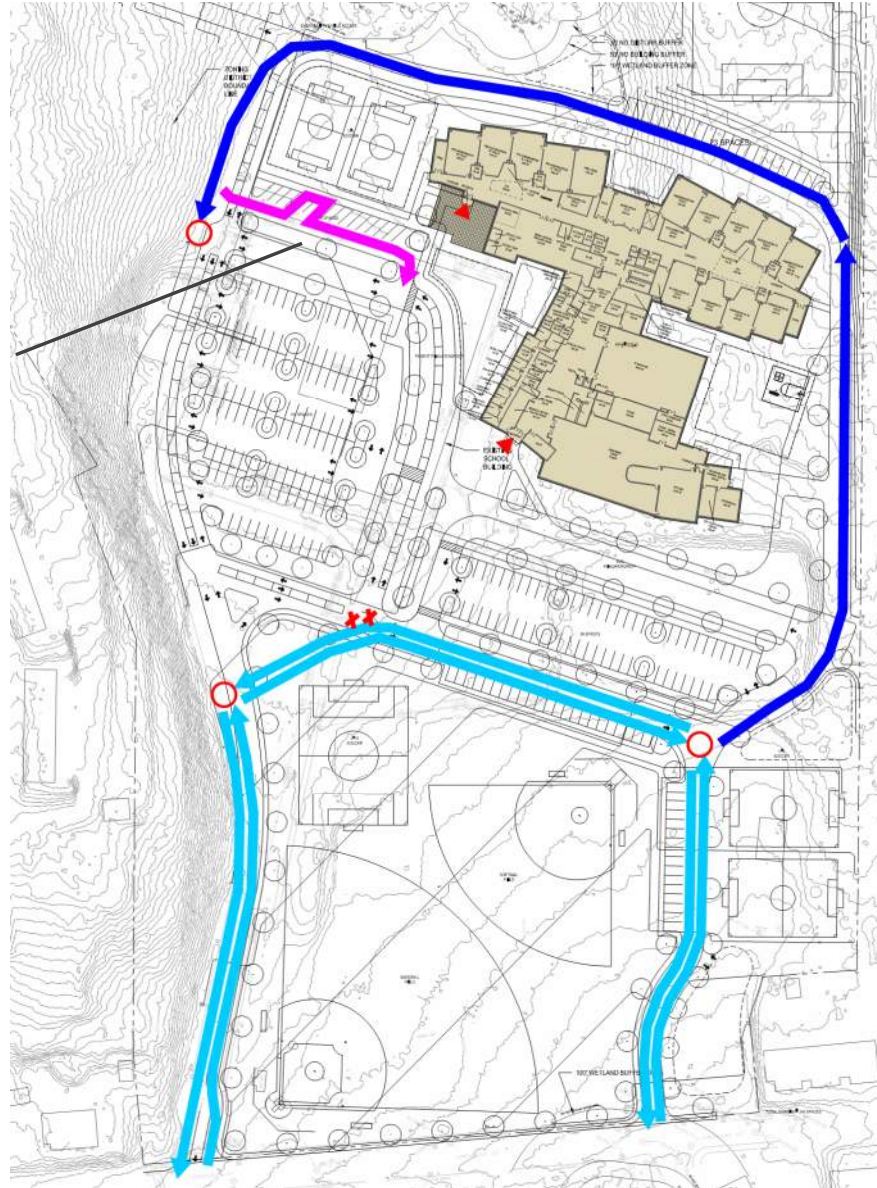


DROP-OFF/  
PICK-UP  
QUEUE  
CIRCULATION



PRE-K/ K  
PARK-AND-DROP  
CIRCULATION

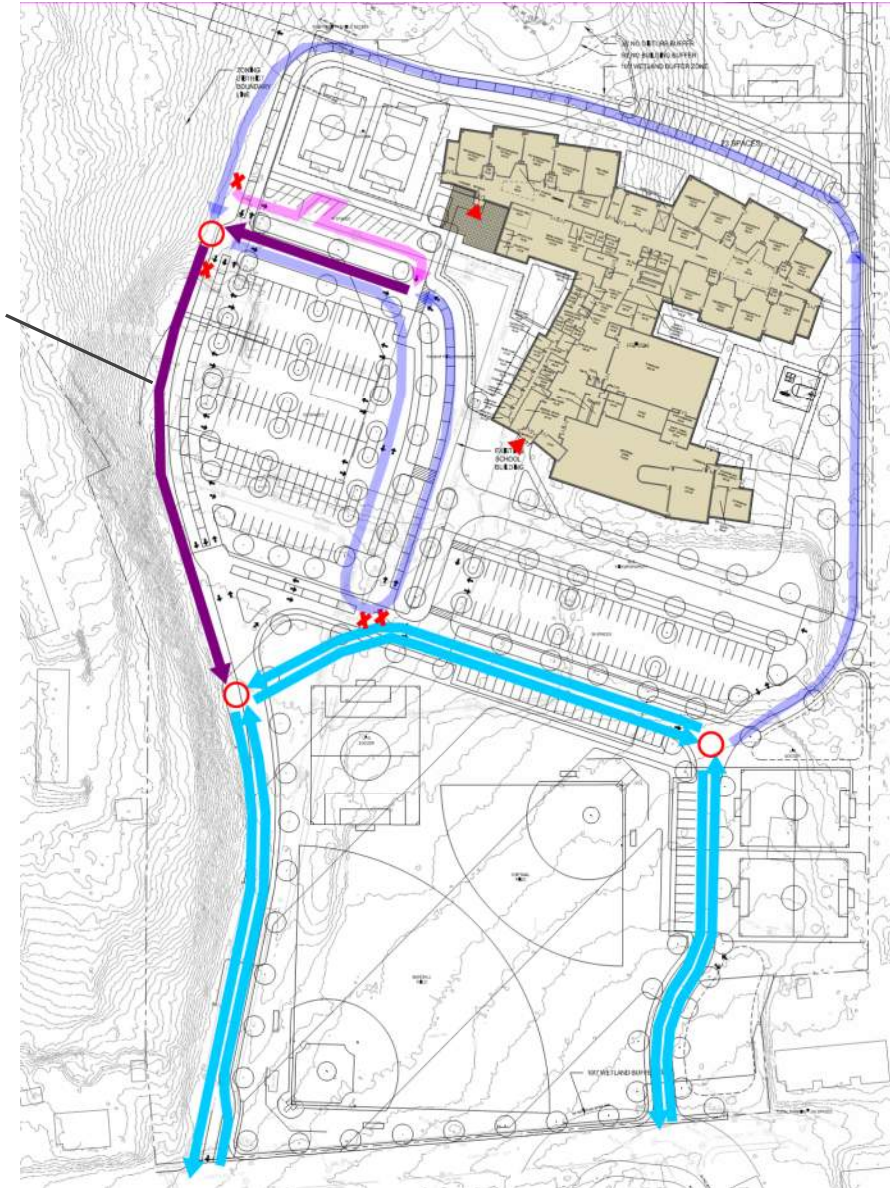
SITE  
CIRCULATION



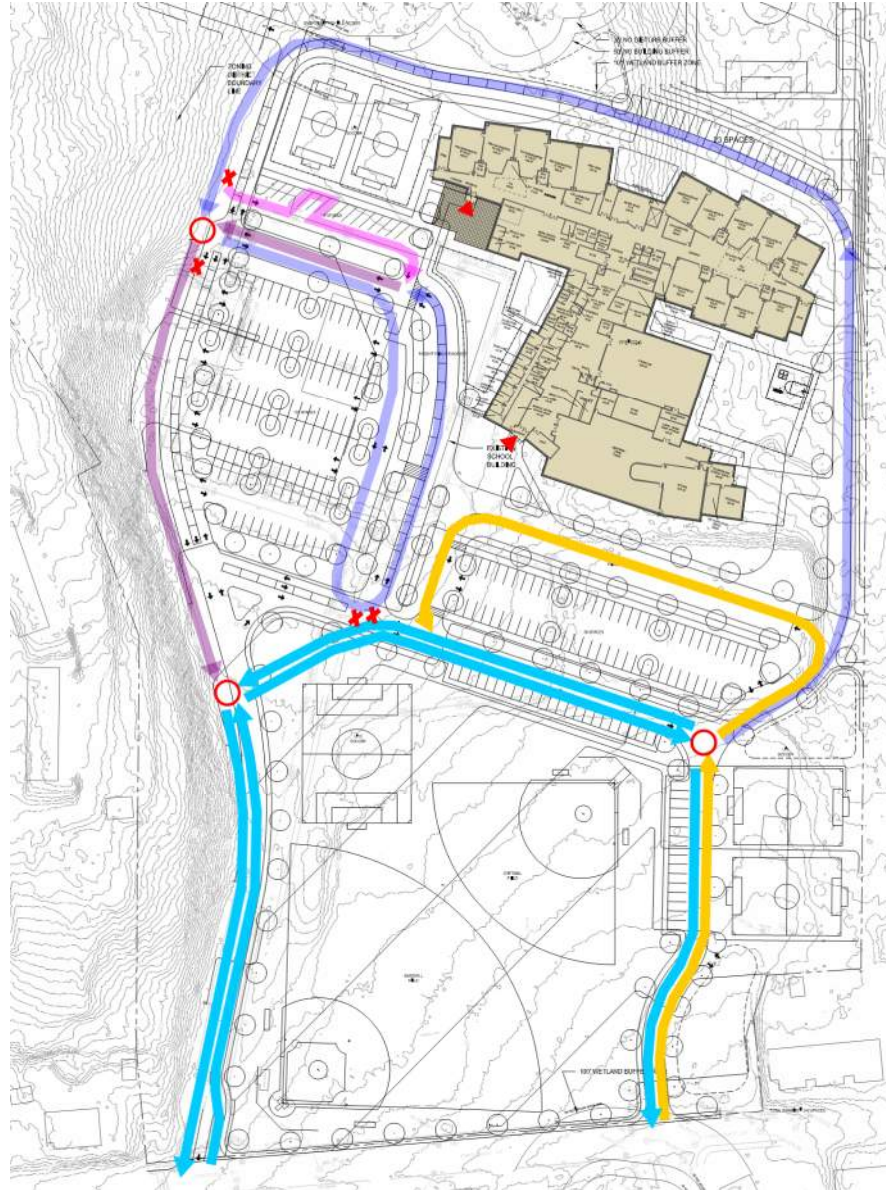


ALL PARENT  
VEHICLES  
EXITING  
CIRCULATION

SITE  
CIRCULATION



# SITE CIRCULATION

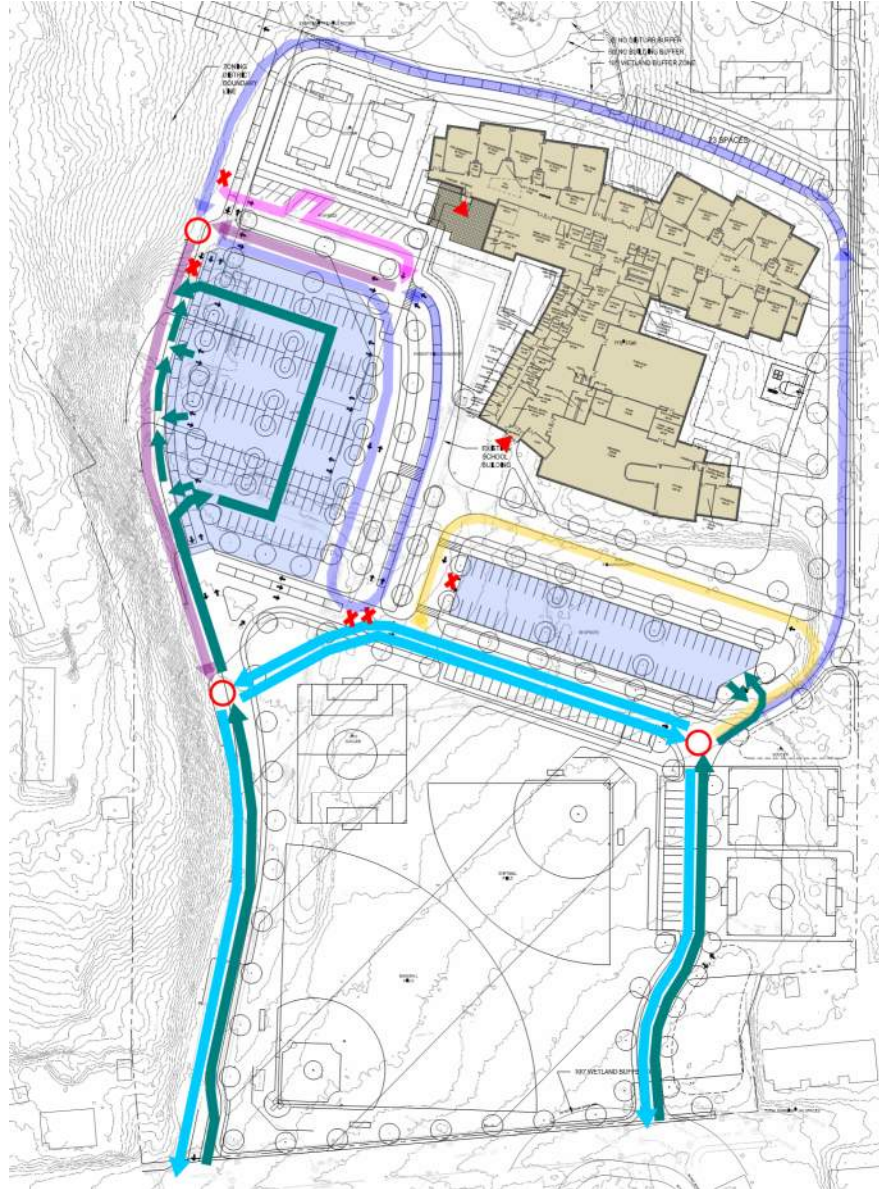


# BUS CIRCULATION

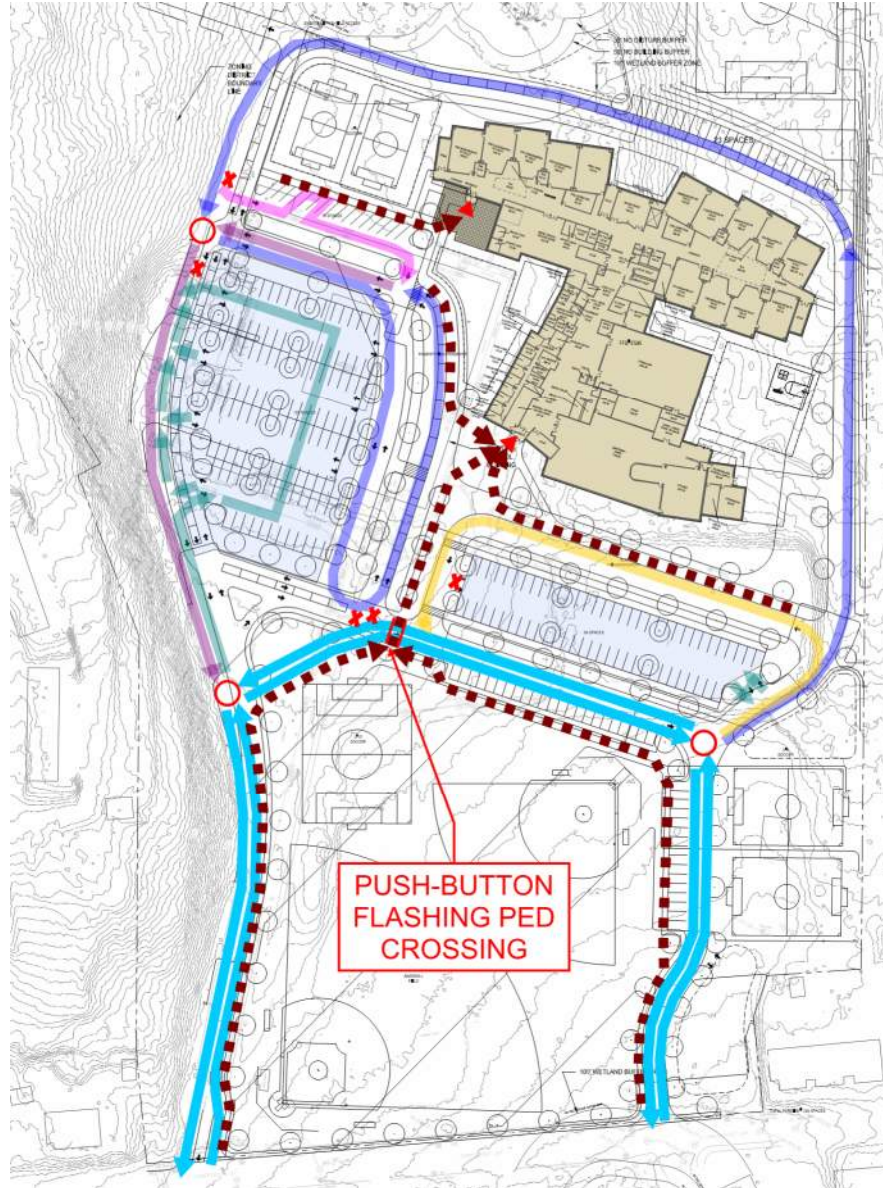


PARKING  
CIRCULATION

SITE  
CIRCULATION



# SITE CIRCULATION

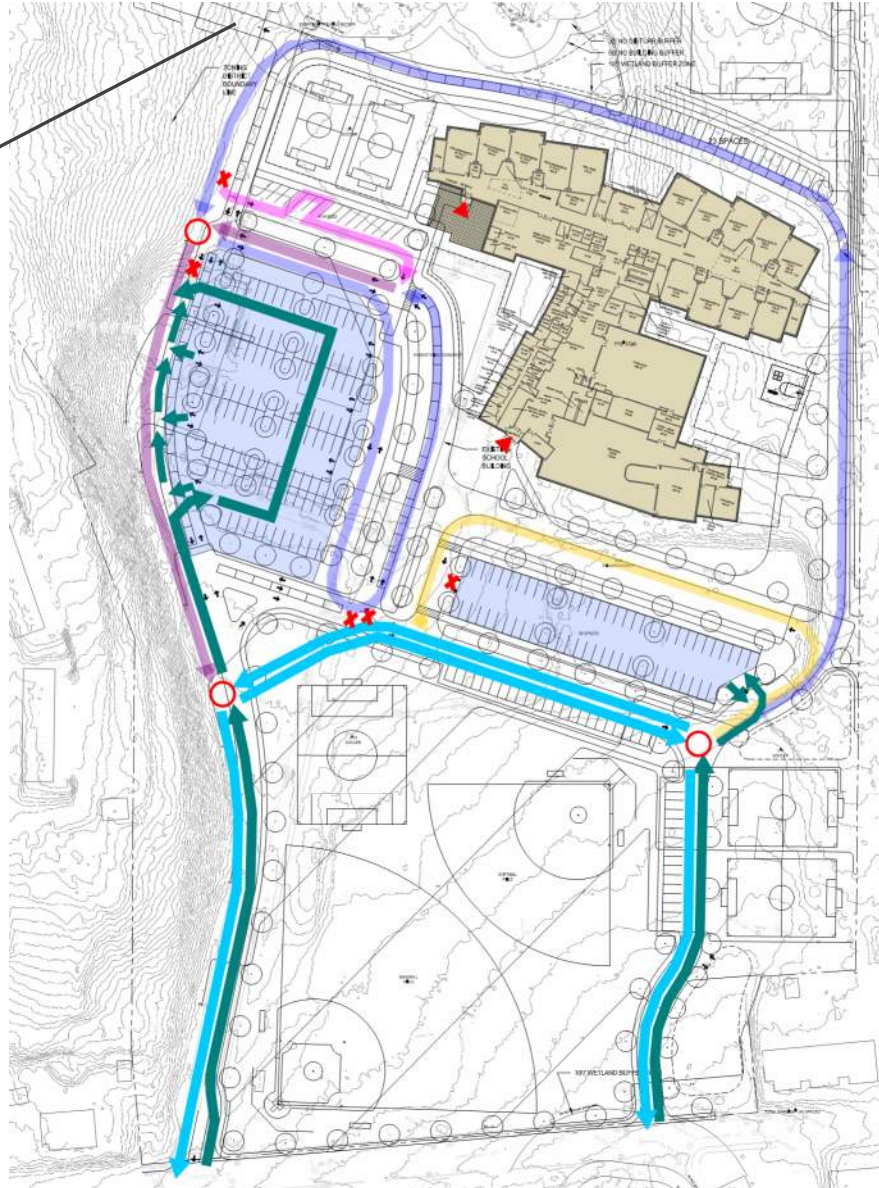


# BIKE/ PEDESTRIAN CIRCULATION



Note: North Main exit drive does not make any difference in function at other exits.

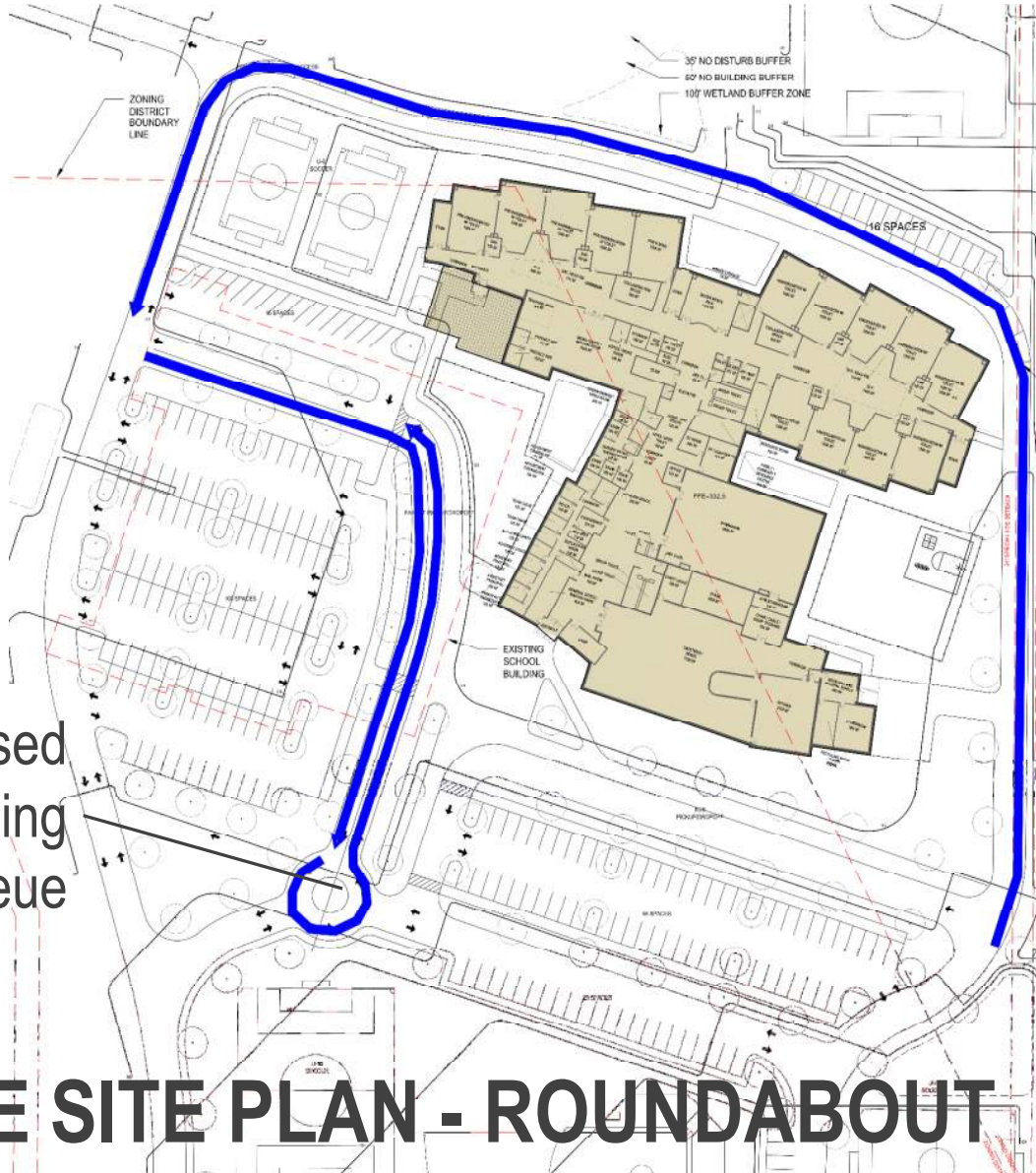
## NORTH MAIN ST EXIT DRIVE



- CHOICES:
- Keep in project
- Remove from project
- Keep in project as bike/ped path only
- Wait for CM input

Roundabout used  
as turning  
movement for queue

## ALTERNATE SITE PLAN - ROUNDABOUT



### BENEFITS:

- Smaller footprint, less complicated
- Works equally for peak and off-peak
- Typical traffic features

### DRAWBACKS:

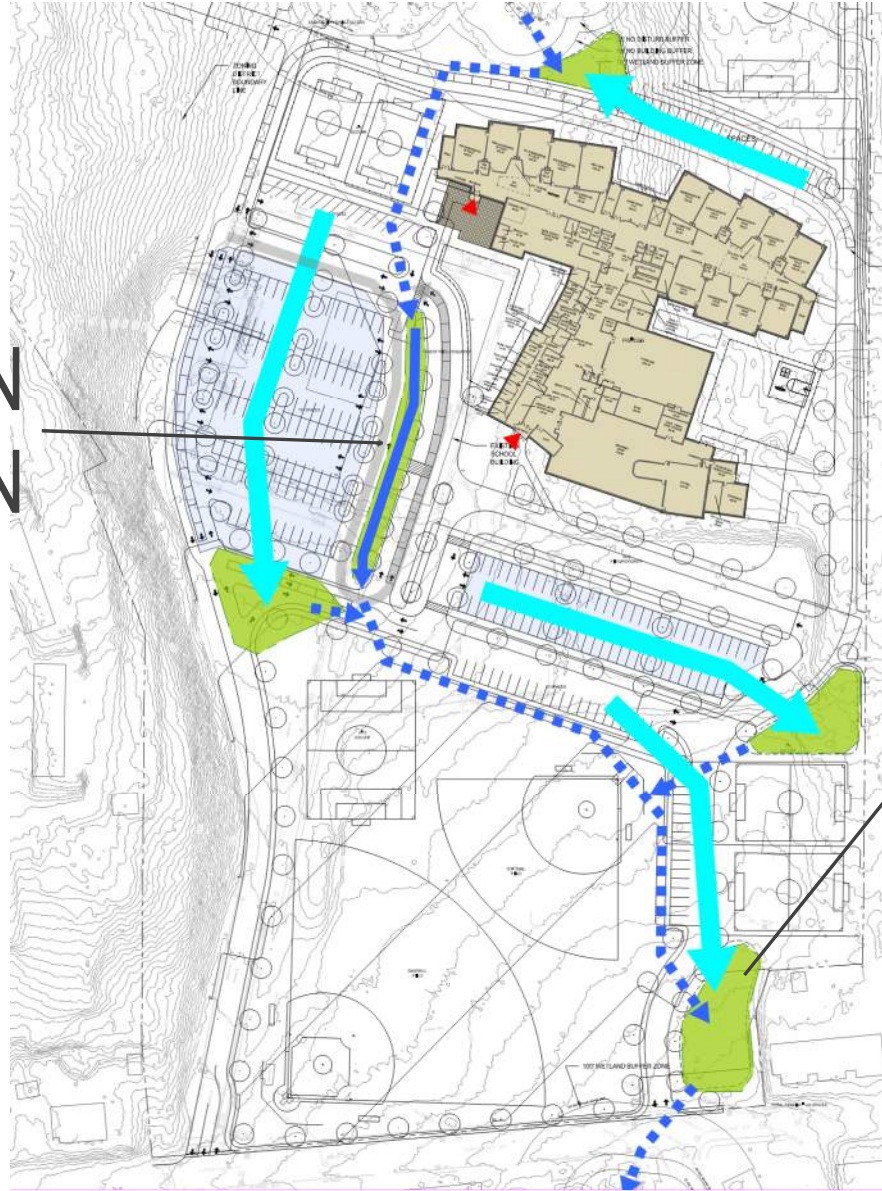
- Roundabout?
- Blocks cross-traffic
- Cheating



**\*UNDER DISCUSSION\***

**DEMONSTRATION  
RAIN GARDEN**

**CIVIL  
ENGINEERING**



**STORMWATER  
PRE-  
TREATMENT**



*Questions?*

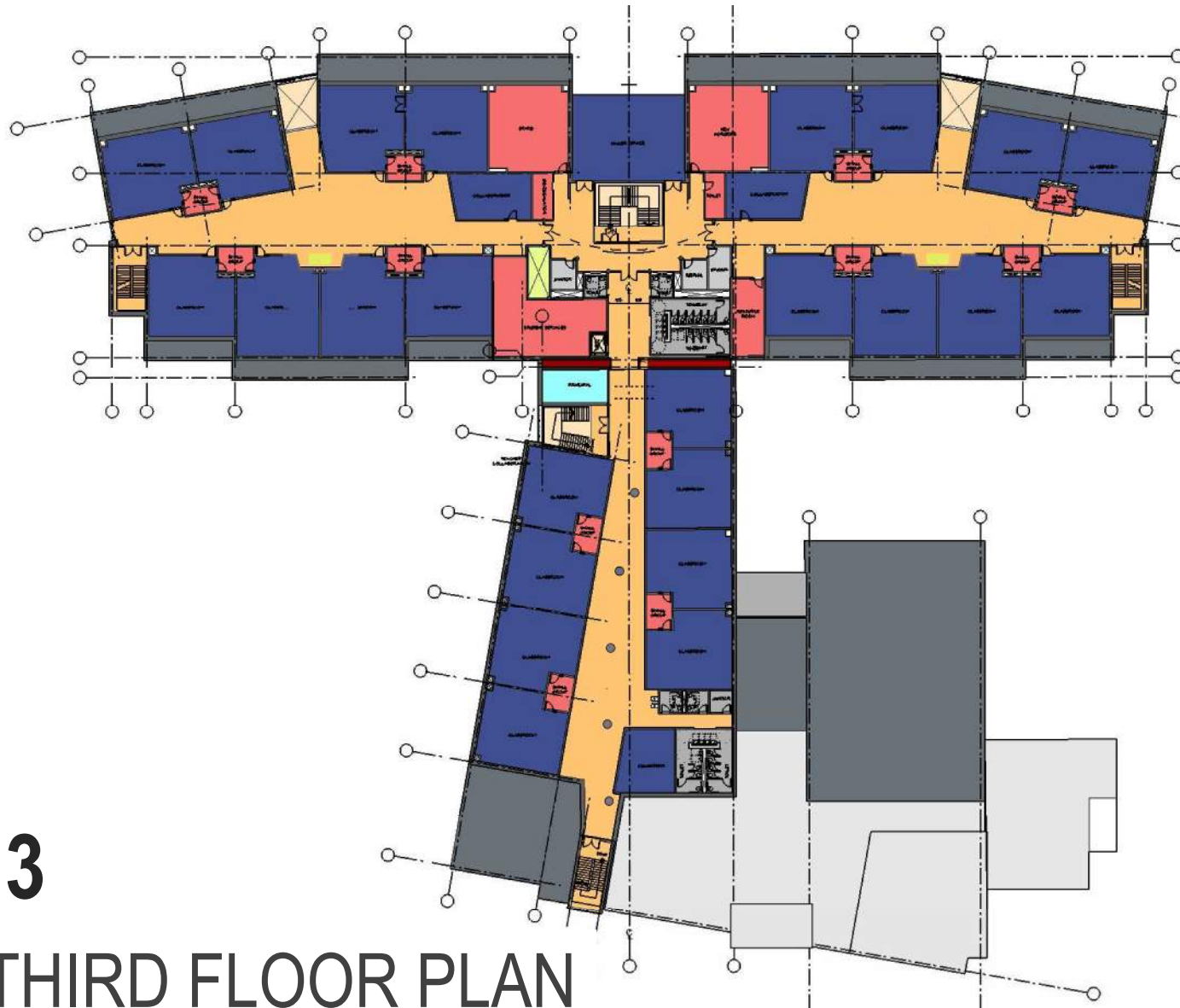
SMMA  
Project Management



**4.**

**DESIGN PROGRESS  
REVIEW**





- Slid Gym east
- Aligned 5<sup>th</sup> grade classrooms
- Established better 5<sup>th</sup> grade extended learning area
- Simplified geometry
- Main “open” stair at crossing
- “Well” stair central to principals’ offices

3

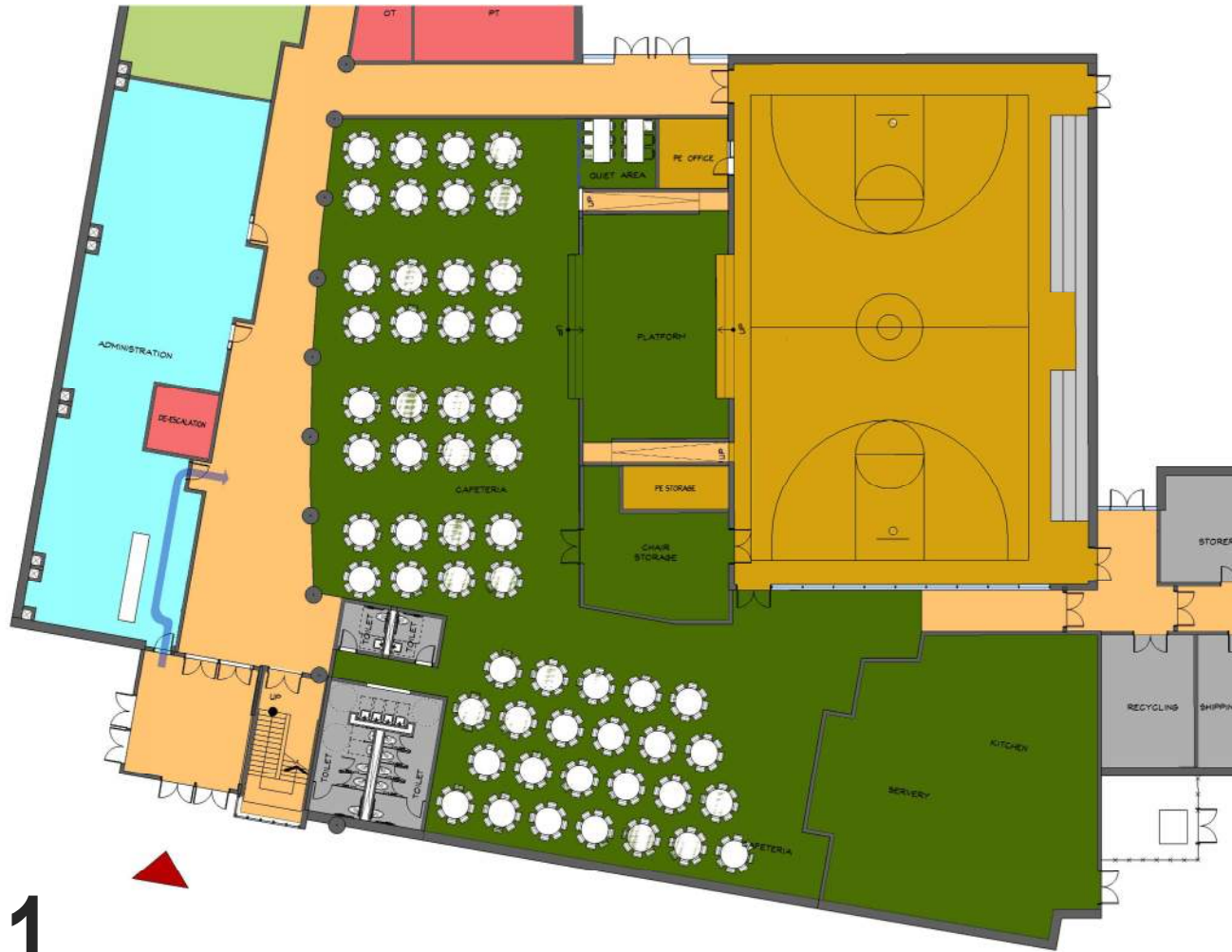
## THIRD FLOOR PLAN



- Learning communities split to let in light
- Cafeteria now two areas
- Stage between Café 1 and Gym
- Café 1 is two-story space
- Mech/Electric Rooms on 1<sup>st</sup> level

1

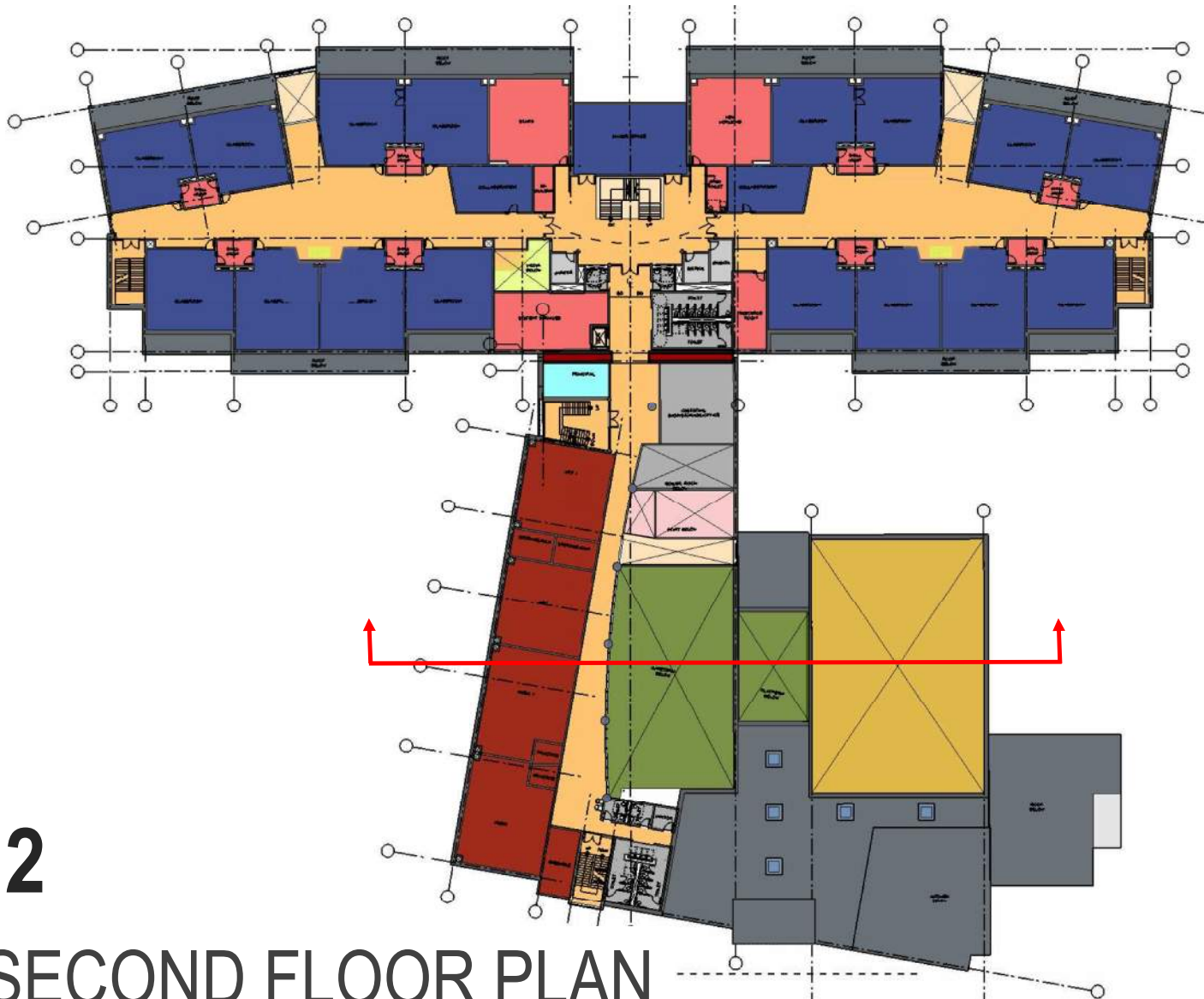
FIRST FLOOR PLAN



- Seating plan accommodates 460 students per seating session (layout to be refined)
- Large space divided into two main areas
- Each area offers open and more enclosed seating options

1  
CAFETERIA FLOOR PLAN



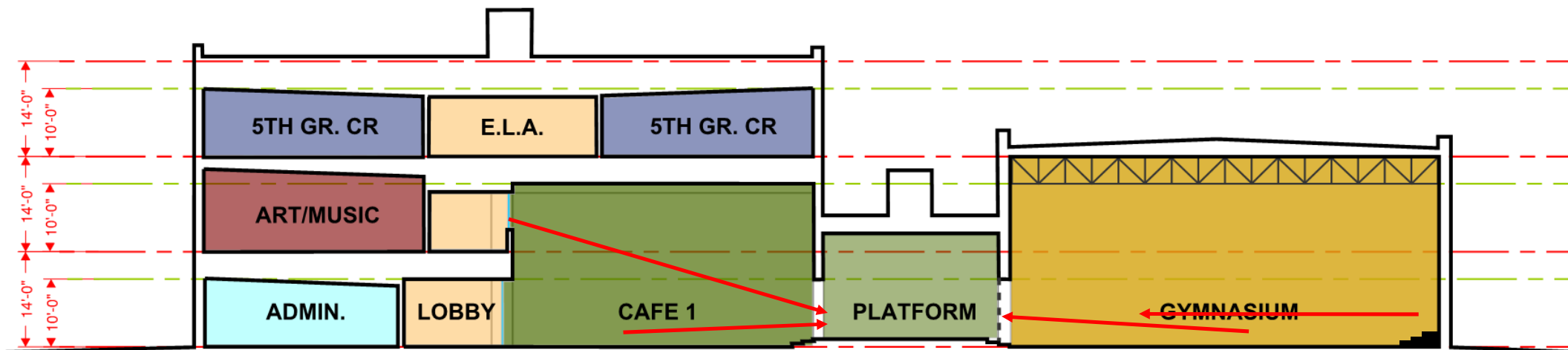


- Art/Music on balcony looking over Cafe1, at stage
- Special education room issues fixed
- Maker spaces still central
- Visual/spatial connection to library
- Custodial storage and shop central to building

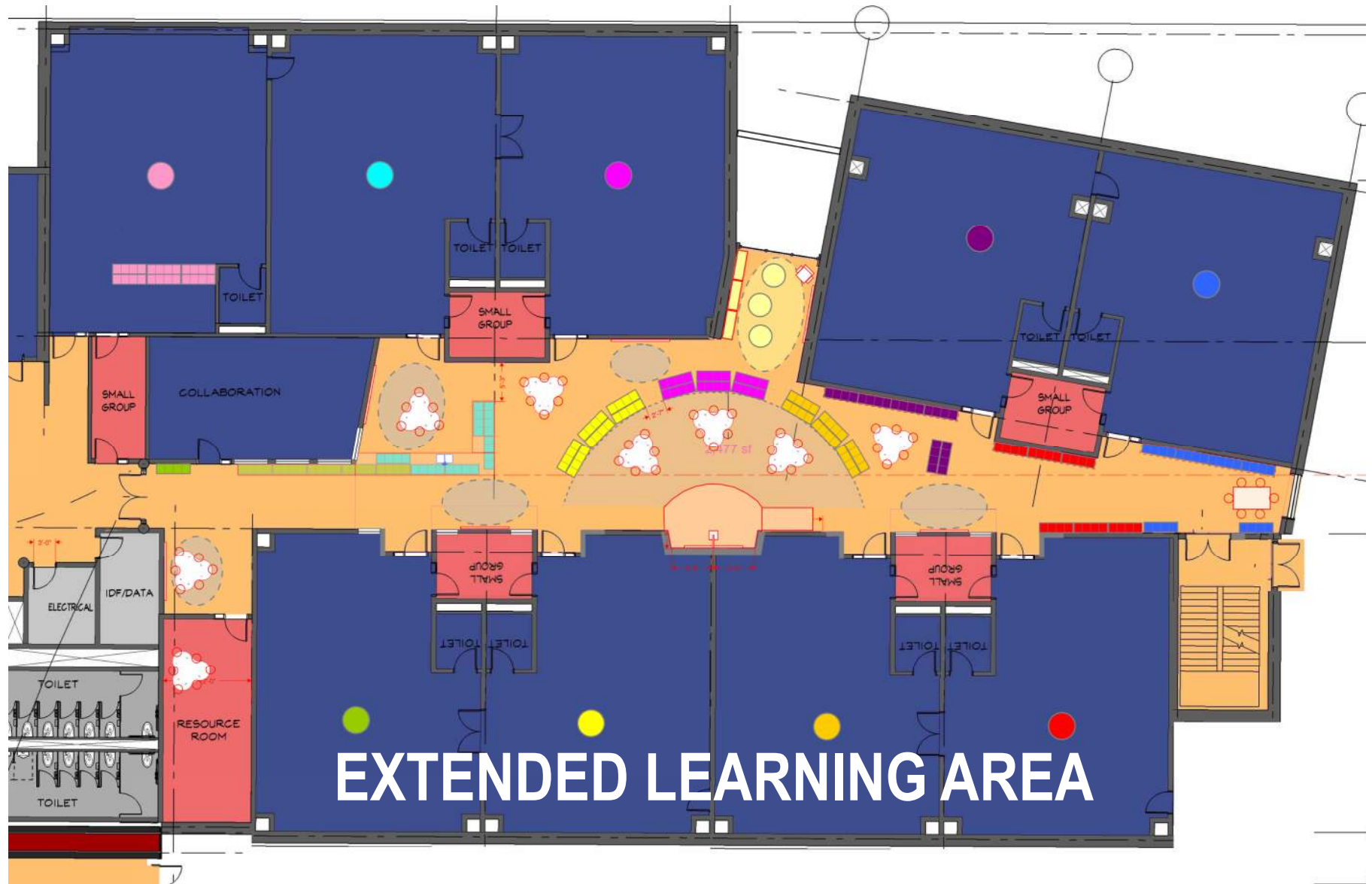
2

SECOND FLOOR PLAN

- Floors related through vertical spaces
- Sense of wonder and discovery – multiple views
- Dual utility of platform – Café/Gym



BUILDING SECTION THRU "PUBLIC" WING







***THANK YOU!***

**SMMA**  
Project Management

