

THE NEW W. EDWARD BALMER SCHOOL

NORTHBRIDGE, MASSACHUSETTS



SCHOOL BUILDING COMMITTEE MEETING

DECEMBER 18, 2018



Massachusetts School Building Authority
Funding Affordable, Sustainable, and Efficient Schools in Partnership with Local Communities



AGENDA

DD Progress Report

Development of Site and Building Design:

- Cut & Fill Study
- Site drainage plan – construction phasing of the 36” storm drain
- Retaining Wall – Gravity Wall best option
- Structural Brace Frames resolved
- User Group Meetings – next level of detail in room design

Façade:

- Discussion of SD design – quick refresher
- Exterior Façade Design – materials and colors discussion
- Cost Discussion



DD PROGRESS REPORT

- 12/3** Working Group Meeting – Playground Design and Equipment 1
- 12/4** Structural Coordination Meeting
- 12/5** Site/Civil Design Meeting
- 12/6** Interiors Internal Design Meeting
- 12/10** Specifications Internal Meeting
- 12/12** User Group/ Staff Meetings at NES – next level of detail
- 12/13** Efficiency/ LEED Meeting/ Mechanical Meeting

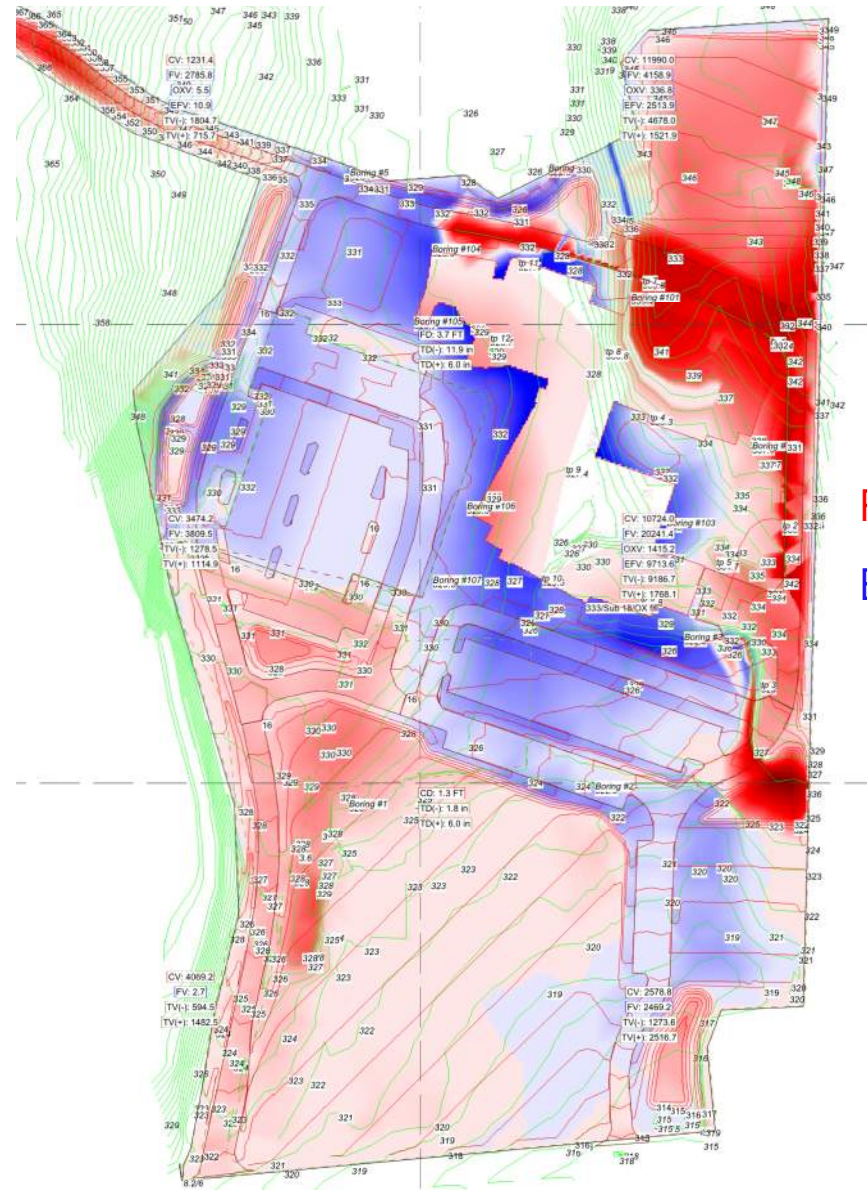
Upcoming:

- 12/19** User Group/ Staff Meetings at NES – next level of detail
- 1/8** Working Group – Interiors, Landscape/ Playground Design 2
- 1/9** Hardware/ Safety/ Security Meeting



CUT & FILL STUDY

- Nitsch Engineering in process of 3-D surface modeling the site
- Once complete, will much easier to evaluate site balance
- Investigating cost/ benefit of raising building +6" - +1'-0"
- Looking at specific cut hot spots like west drive and east property line



Red = Cut

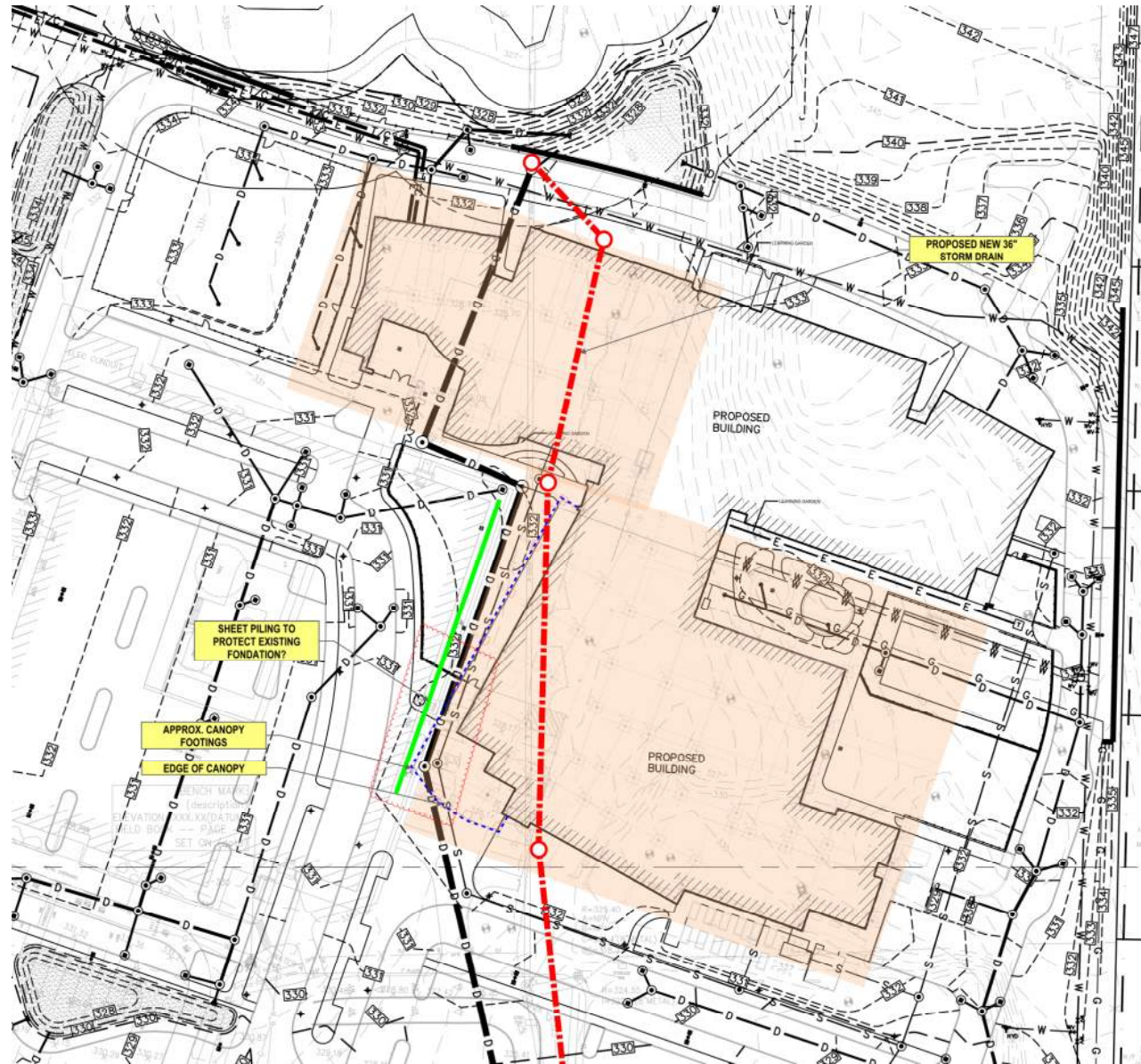
Blue = Fill



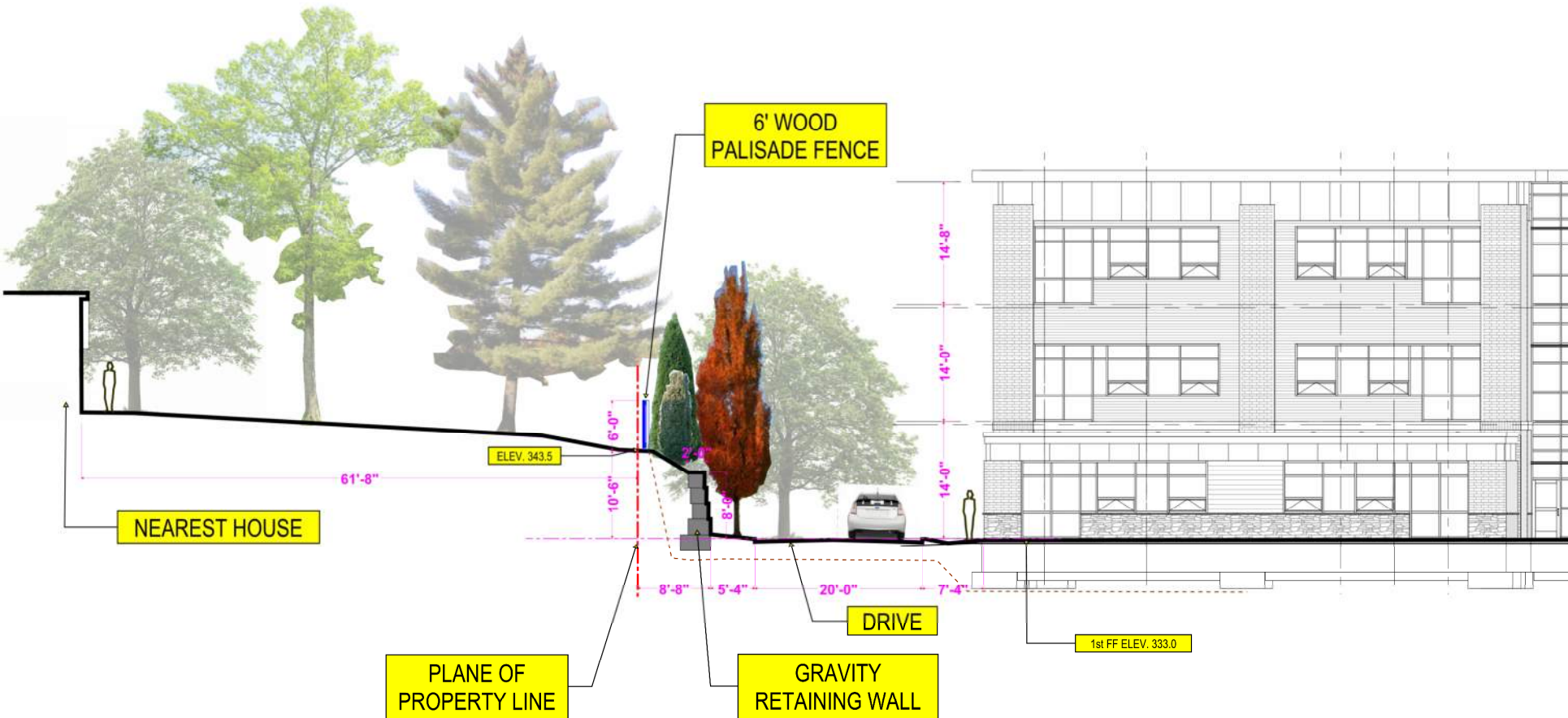
SITE DRAINAGE DESIGN

36" Storm Drain:

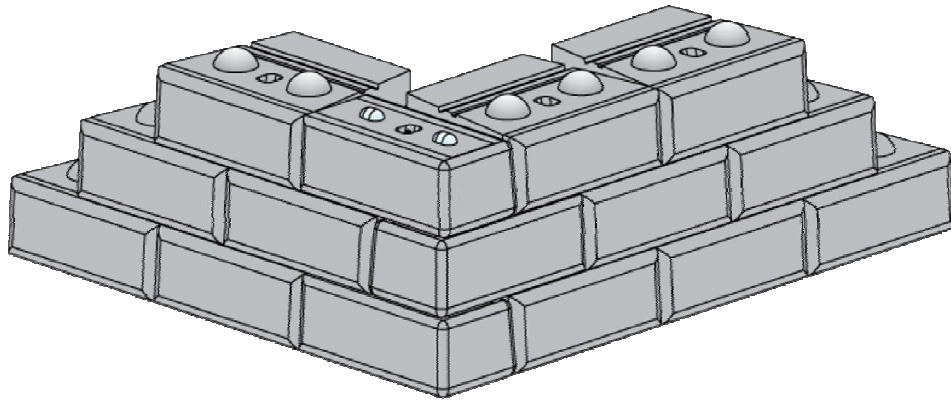
- Appears too crowded between existing and new building
- Looking at alternate layout



EAST PROPERTY LINE – SITE SECTION



EAST PROPERTY LINE – RETAINING WALL

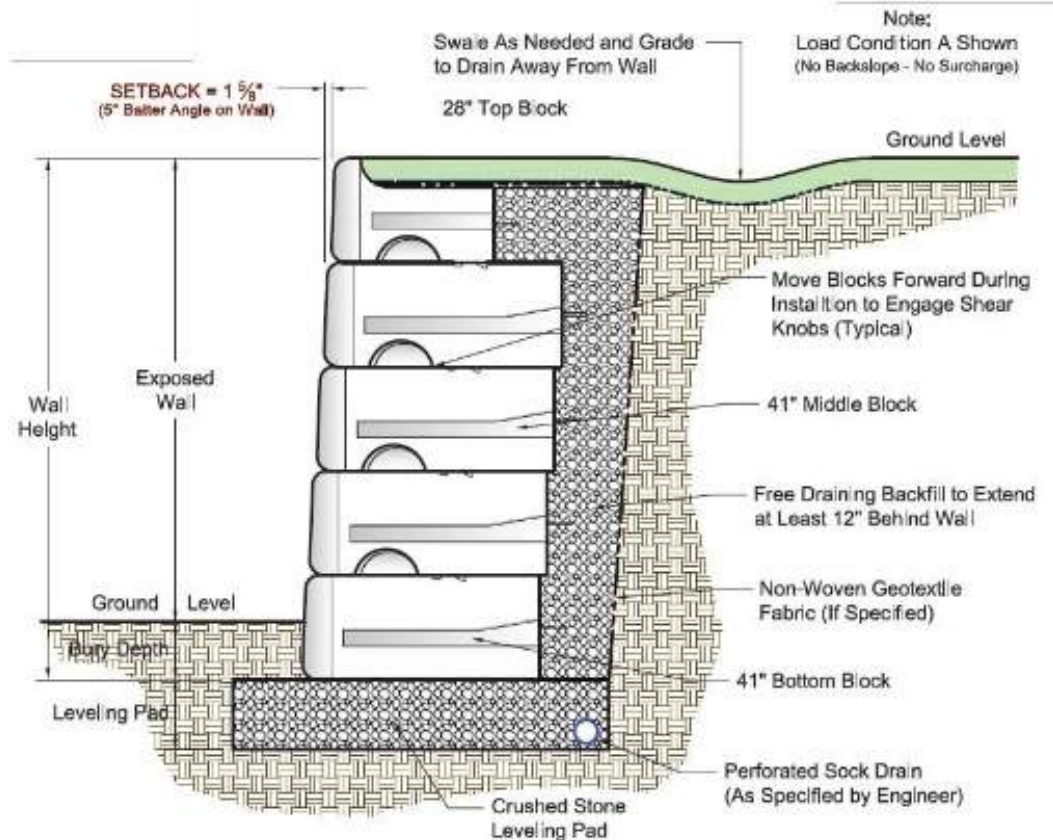


REDI-ROCK

Or Equal

Typical Gravity Wall with 41" Blocks

No Scale



EAST PROPERTY LINE – RETAINING WALL

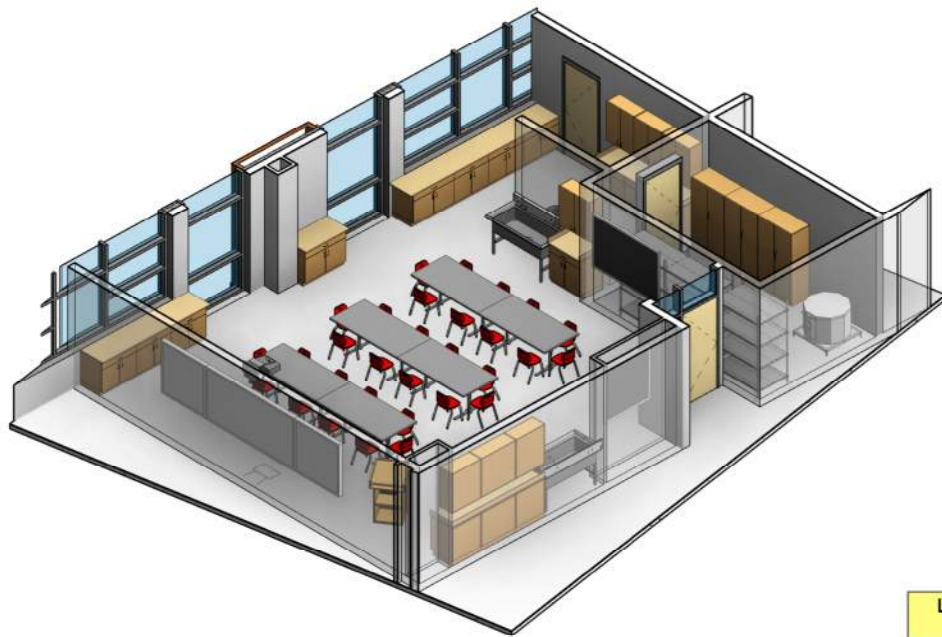


STRUCTURAL – BRACED FRAMES

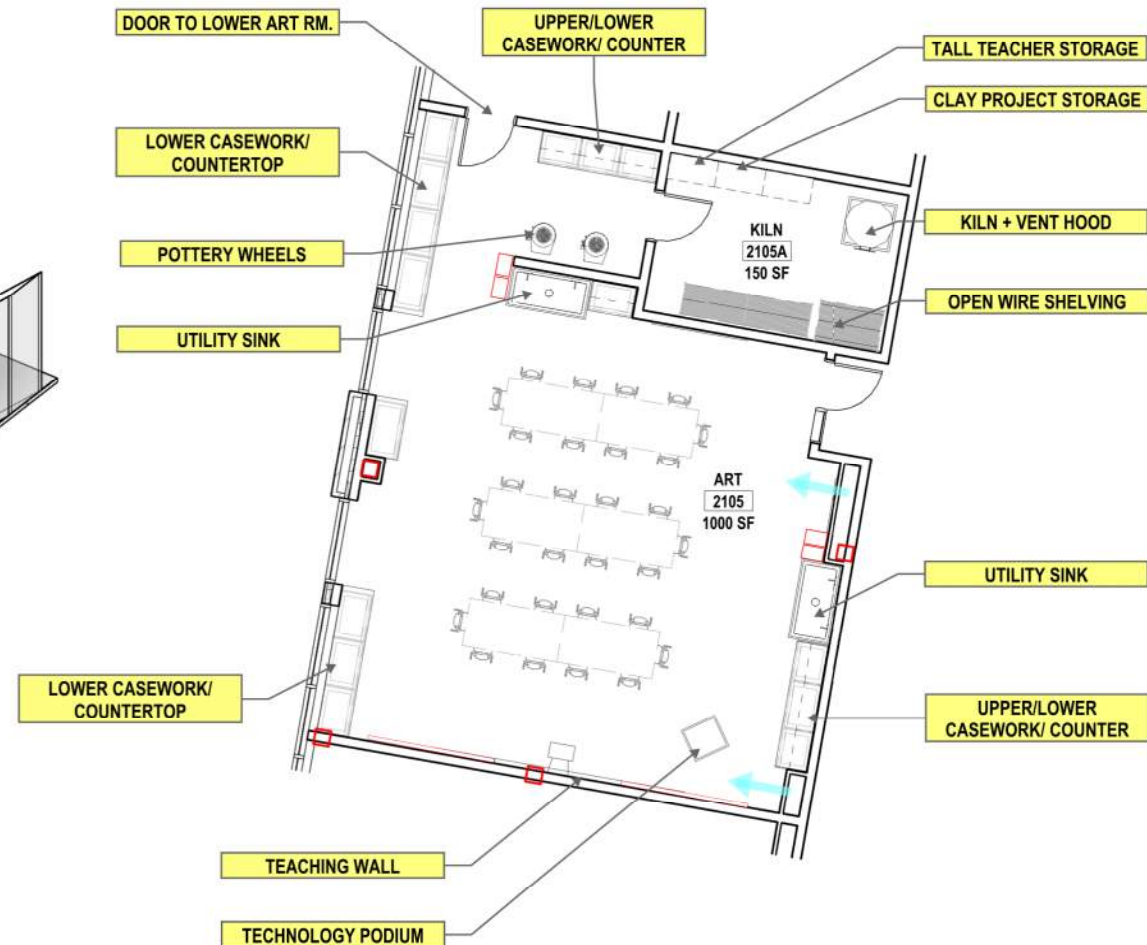
- Resolved several problem locations of braced frames
- C-Wing was priced as Moment Frames, and we found a way to use braced frames; some advantages to this for system continuity
- Some revisions to architectural walls will result – changes underway right now



USER GROUP MEETINGS – ROOM DATA SHEETS



Typical 3-D and 2-D information discussed with faculty and staff to further define interior fit-out of spaces.

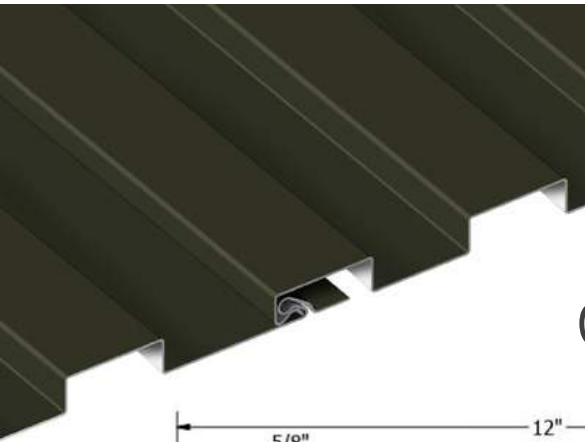


FACADES – PANEL COLOR AND MATERIALS

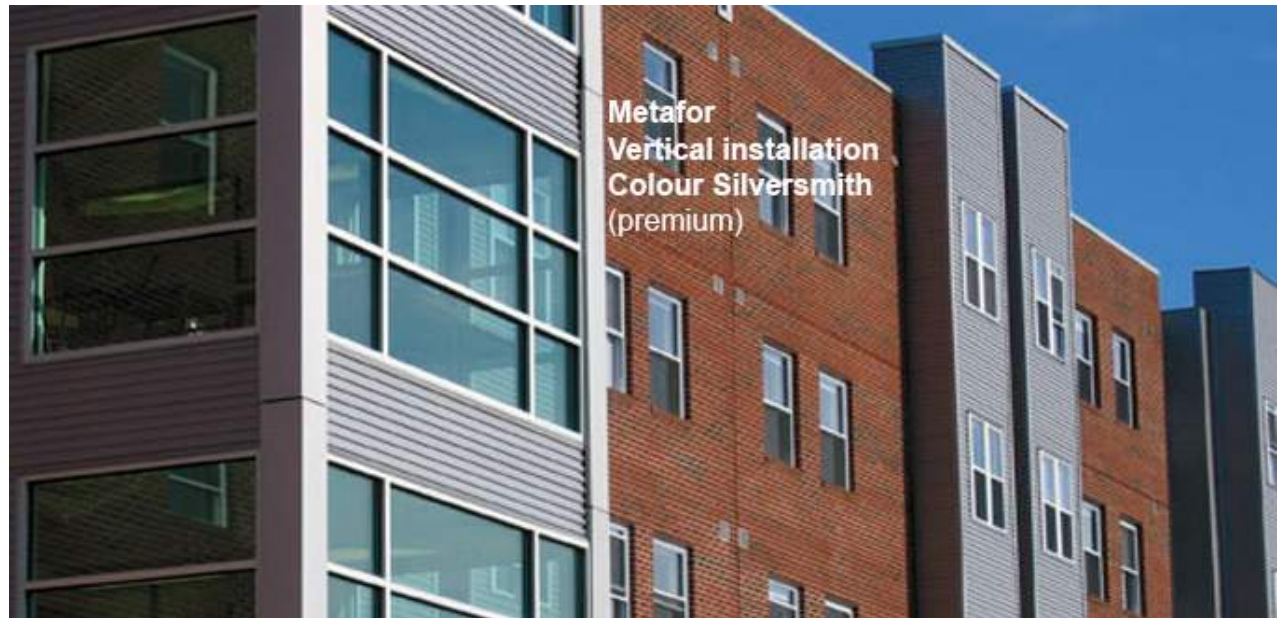
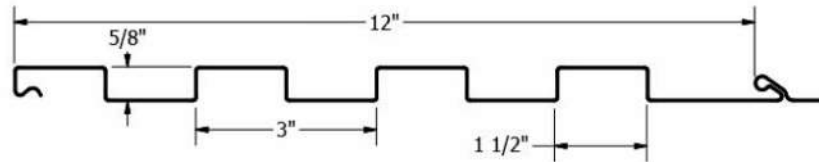




SD Material – “Copper Patina” Corrugated metal siding



Panel Material:
Corrugated metal siding





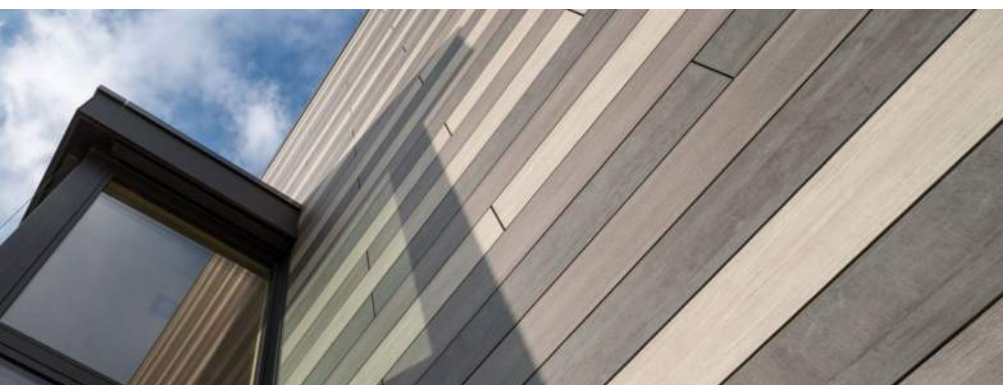
1. Mixed wood look/ Green windows



2. Mixed wood look/ Maroon windows



3. Brighter greens/ Teal windows



Re.1-2. Layered wood look/
narrow horizontal slat product



Re.1-2. Random wood look/
narrow horizontal slat product



Re. 3. Color block look/ panel product



Re 3. Color block look/
panel product

DD WORKING GROUP SCHEDULE HIGHLIGHTS

DD Phase Activity	MEETING
Playground and Outdoor Learning Spaces	12/4/18
Exterior Materials, Site & Building design updates	12/18/18
MEP FP Systems	1/2/19
Interiors Presentation, Site Design/Playgrounds update	1/8/19
Interior Design of Instructional Spaces, Interior Materials	1/15/19
LEED Presentation	2/5/19
Issue 90% DD Pricing Drawings to Estimator	2/22/19
DD Estimate Due/ Reconciliation	3/14/19
DD VE Items Due	3/29/19
100% DD documents to MSBA	4/5/19

