

Interior Finishes

School Building Committee Meeting 01.15.2019



W. Edward Balmer
Elementary School



THEME: NATURAL HABITATS







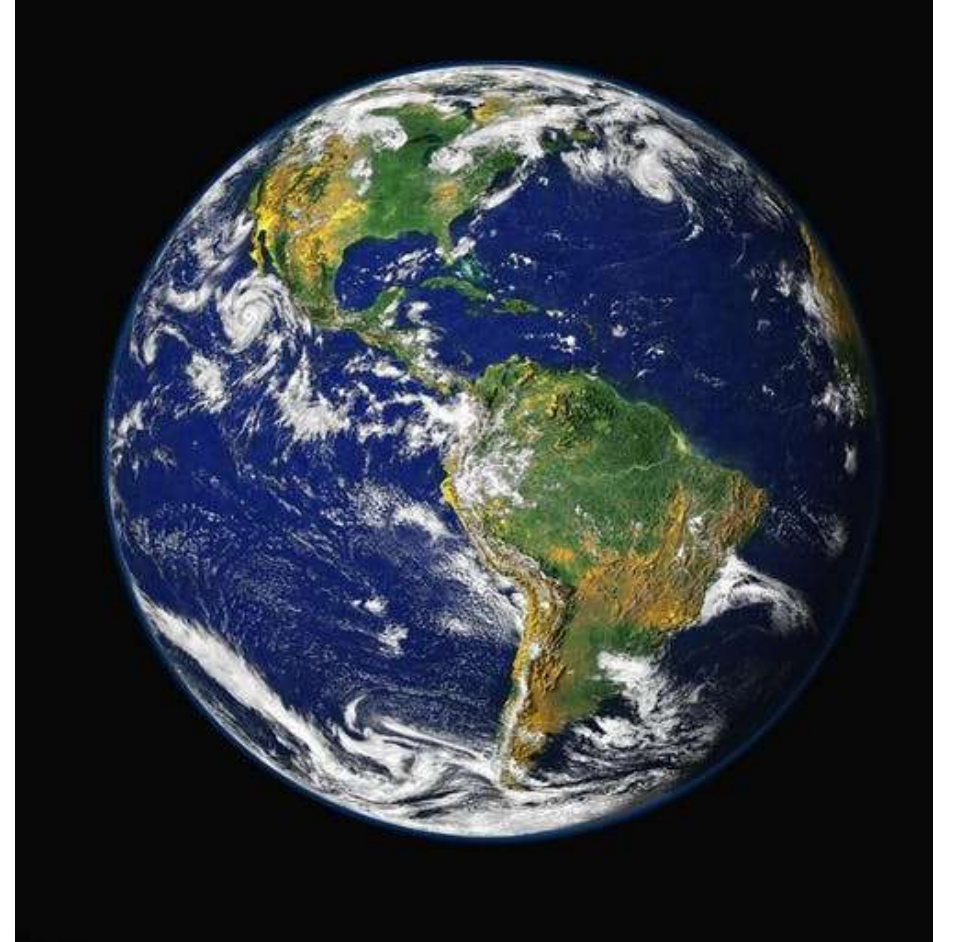
THEME: FOREST





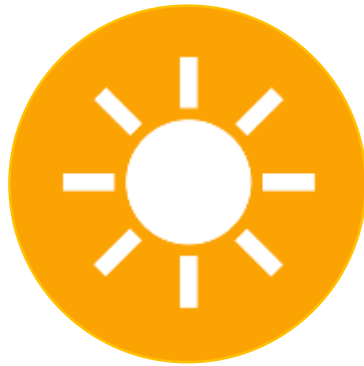
COMMUNITY THEME:

EARTH



Themes & Graphic Wayfinding Icons

SKY



3-4-5

Community

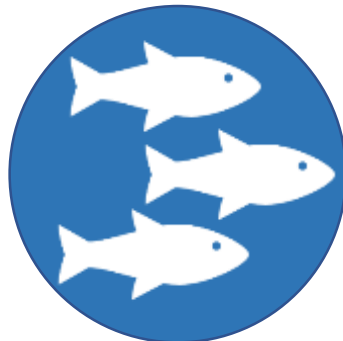


FOREST



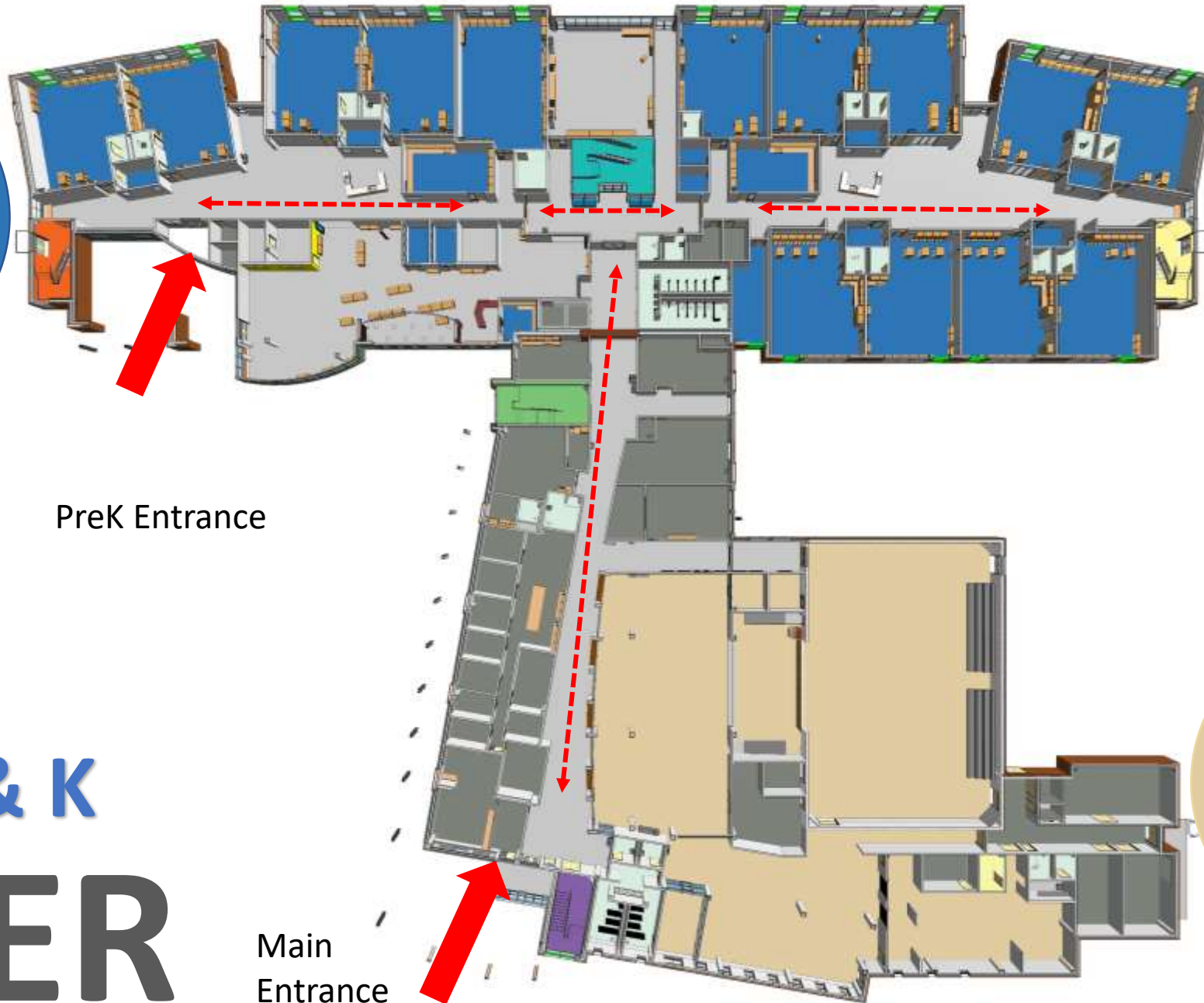
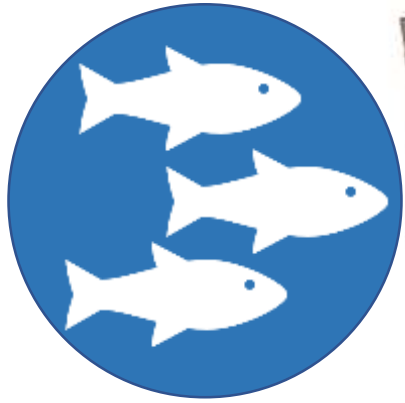
1 & 2

RIVER



Pre-K & K

EARTH



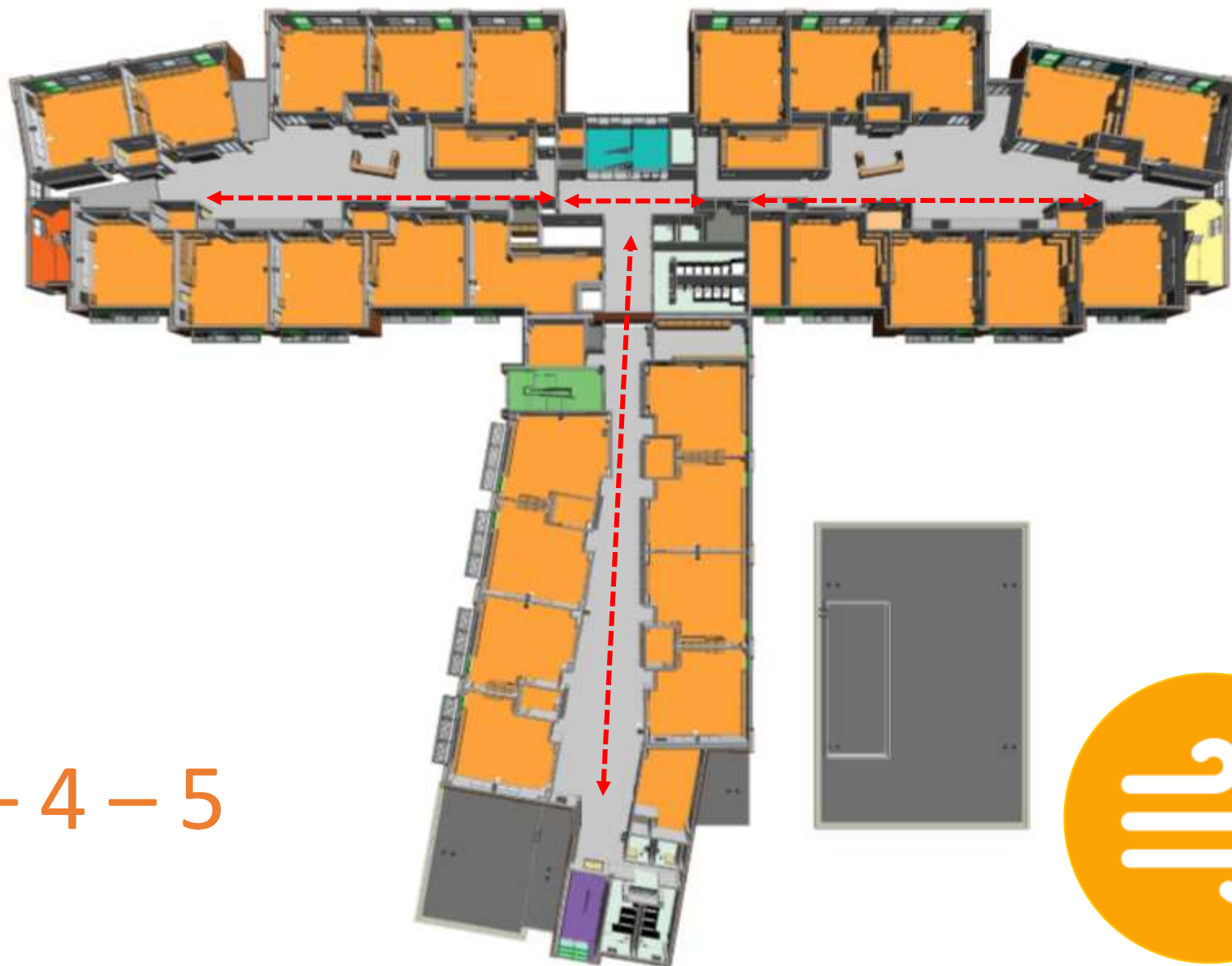
PreK Entrance

Main Entrance

Pre-K & K RIVER



1st and 2nd Grade
FOREST



Grades 3 – 4 – 5

SKY



Color Scheme based on Length of Stay within various locations

Level 1
River

Level 2
Path

Level 3
Sky

White
Throughout



Long length of stay in space:
Classroom, Group Room, and
Specialist Room



Medium length of stay space:
Cafeteria, Media/Library, Extended
Learning Areas



Short length of stay in space:
Staircase, Hallway, Entries, Bathrooms

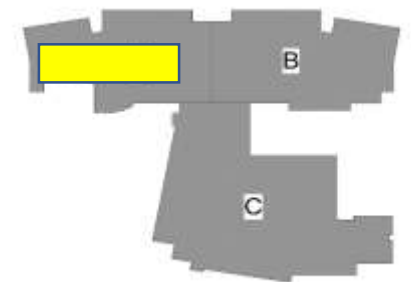
Level 1 – typical classroom wing - Blue

Grades Pre-K & K

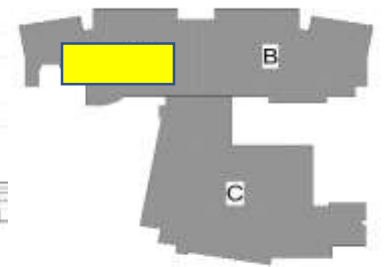
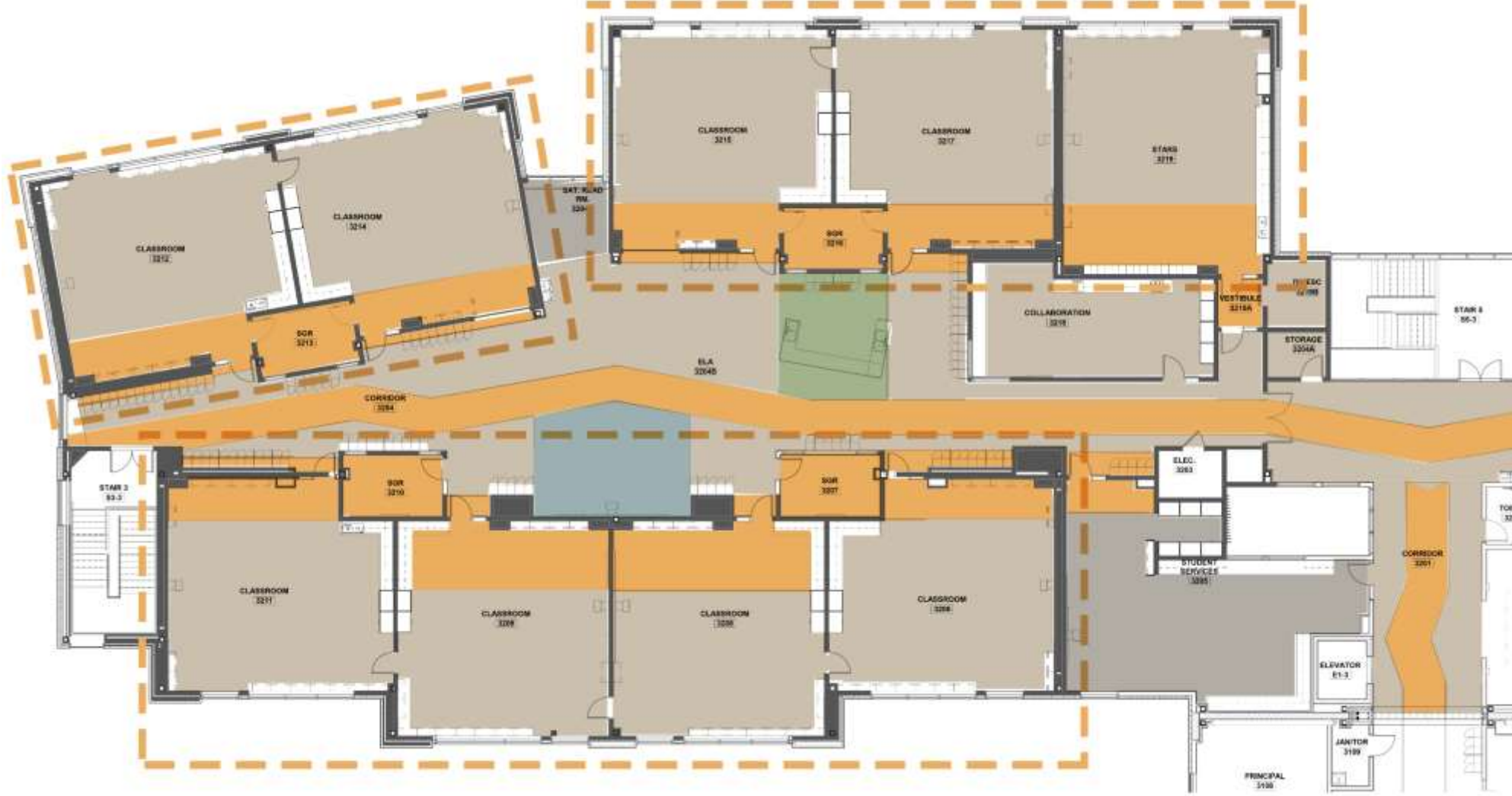


Level 2 – typical classroom wing - Green

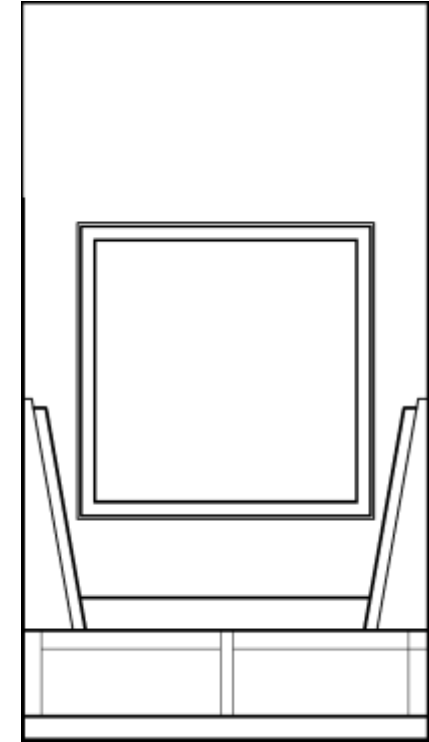
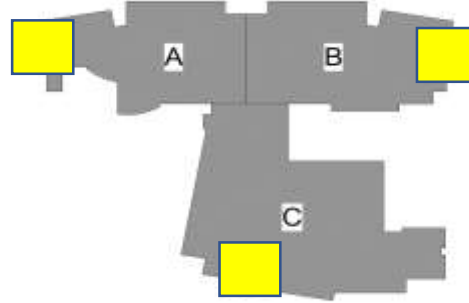
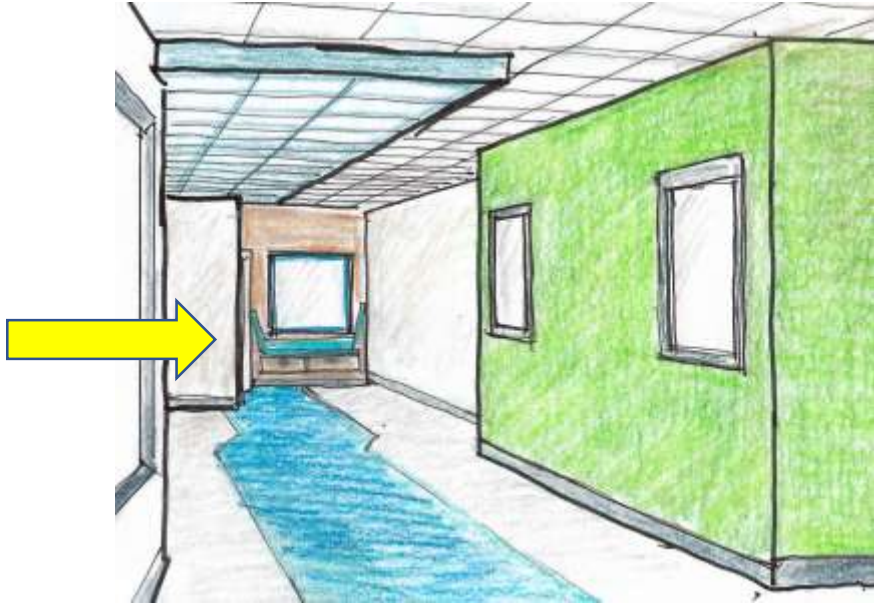
Grades 1 & 2



Level 3 – typical classroom wing - Orange
Grades 3 – 4 - 5



Window Seats

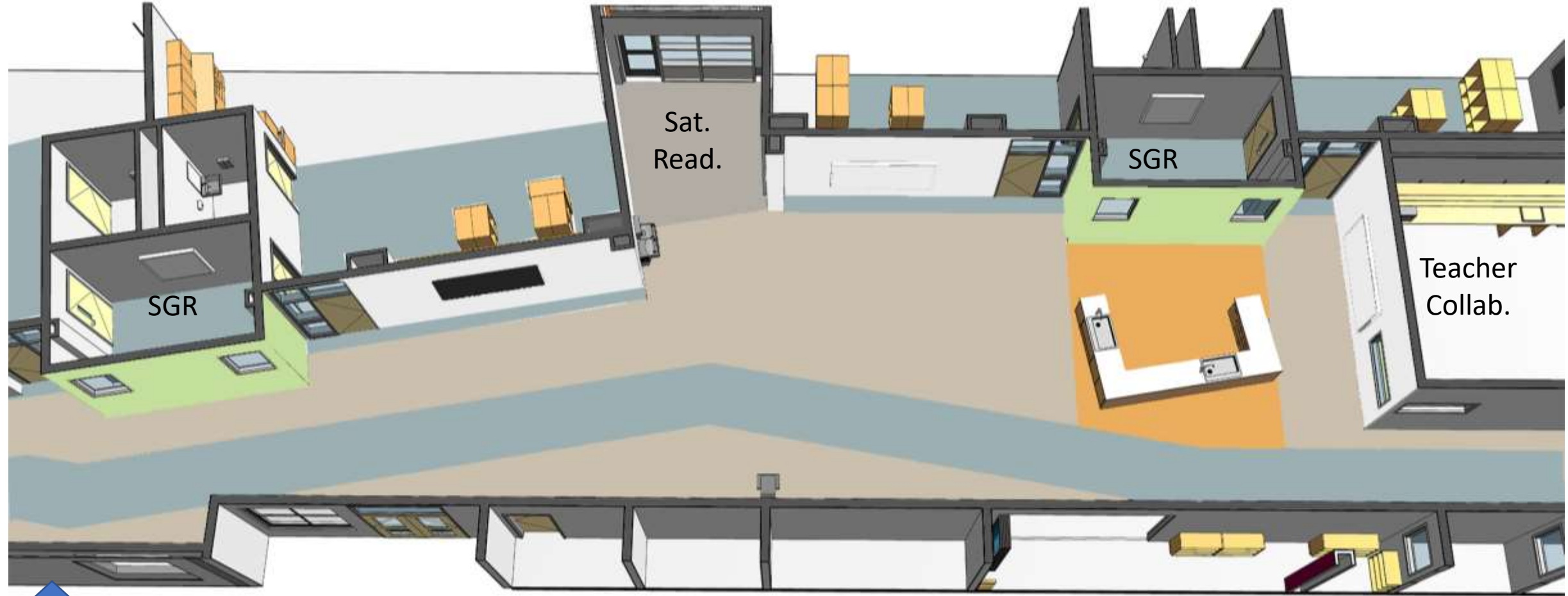


Built-In window seat, with seat and side cushion. Open storage below.

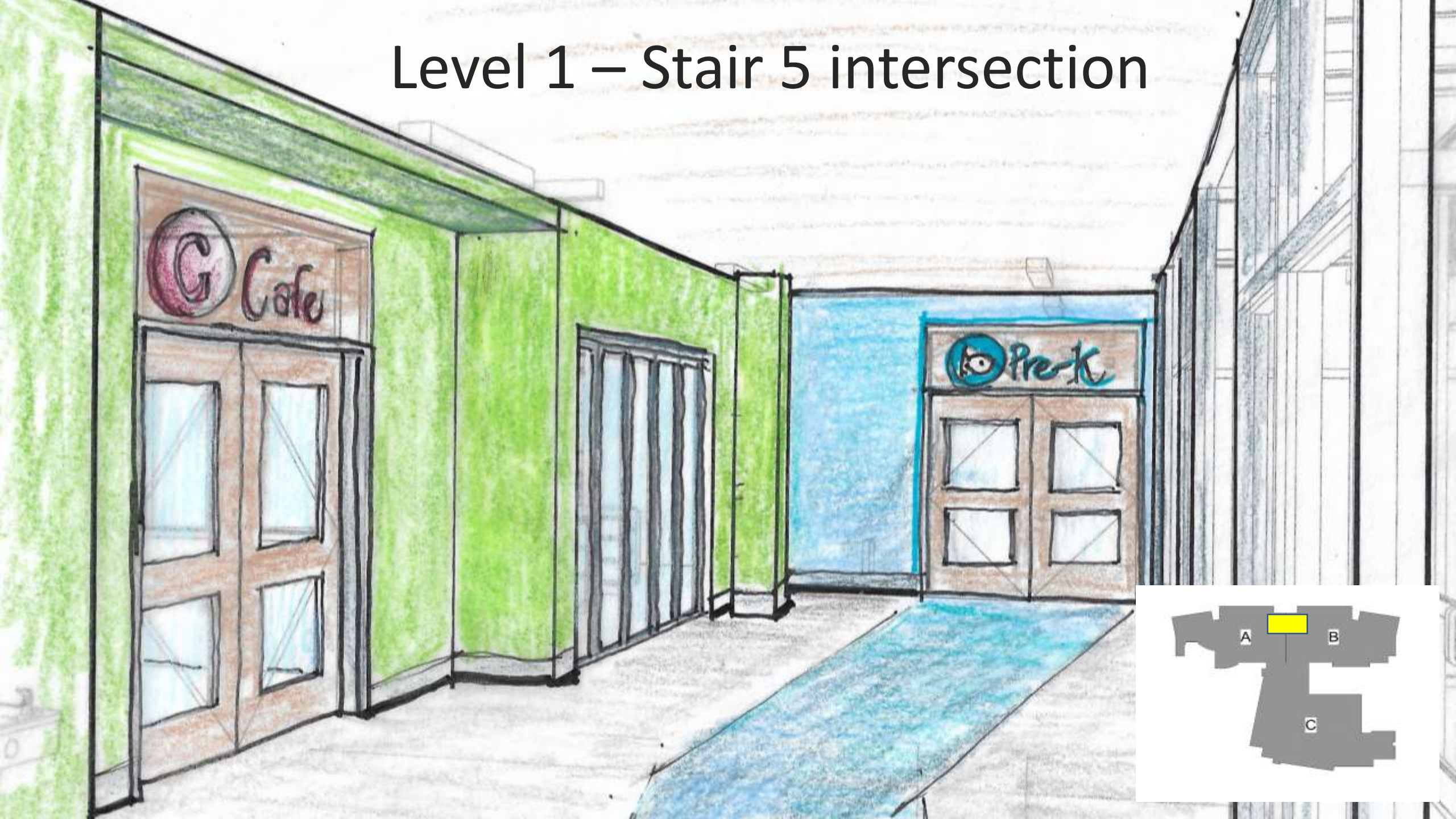


Typical for all floors, window seats are located at the end of each corridor

Pre K – Entry and ELA

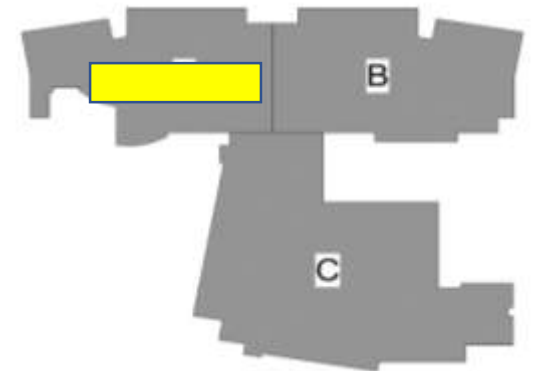
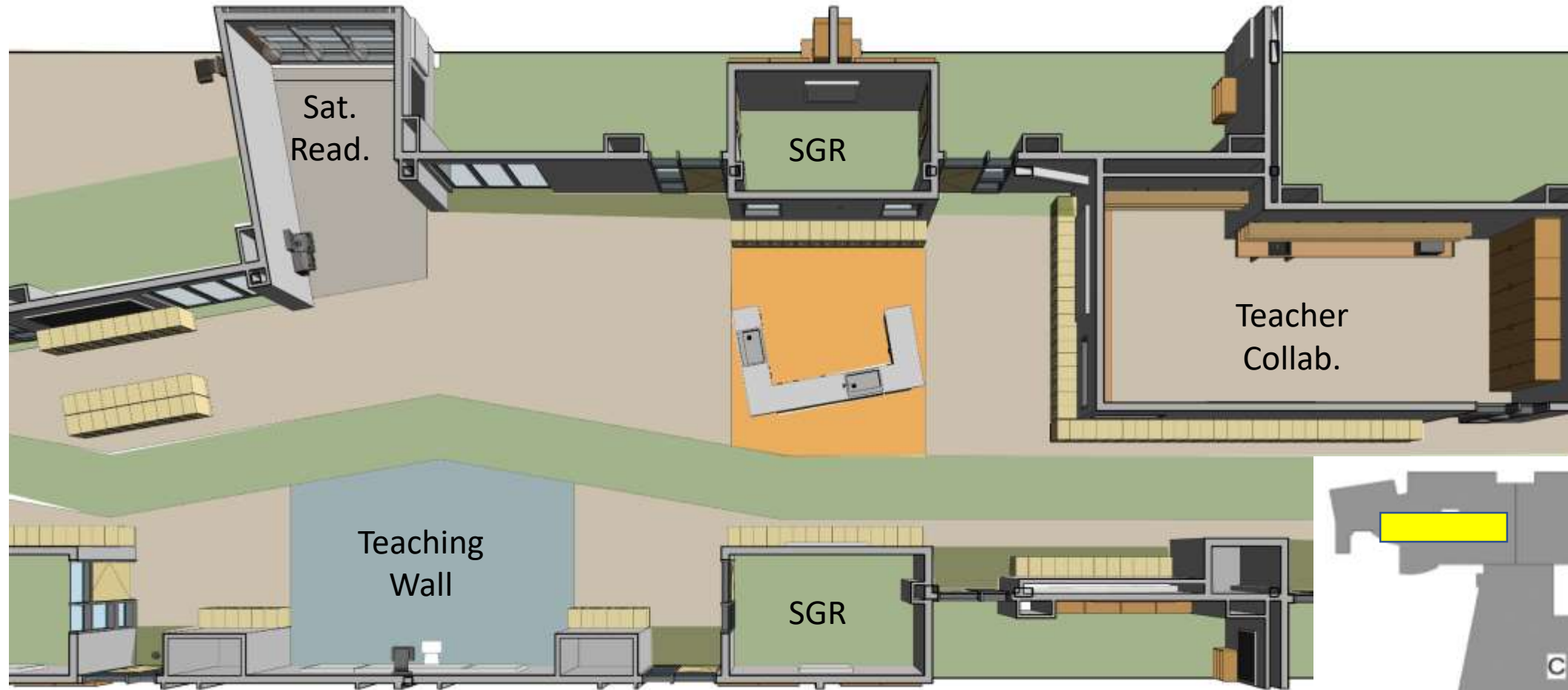


Level 1 – Stair 5 intersection



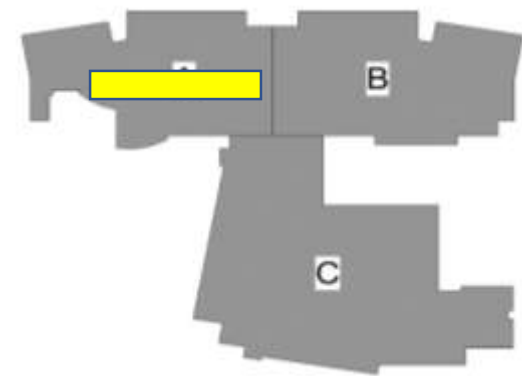
Level 2 – A wing

Level 3 similar

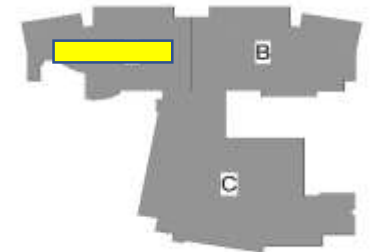
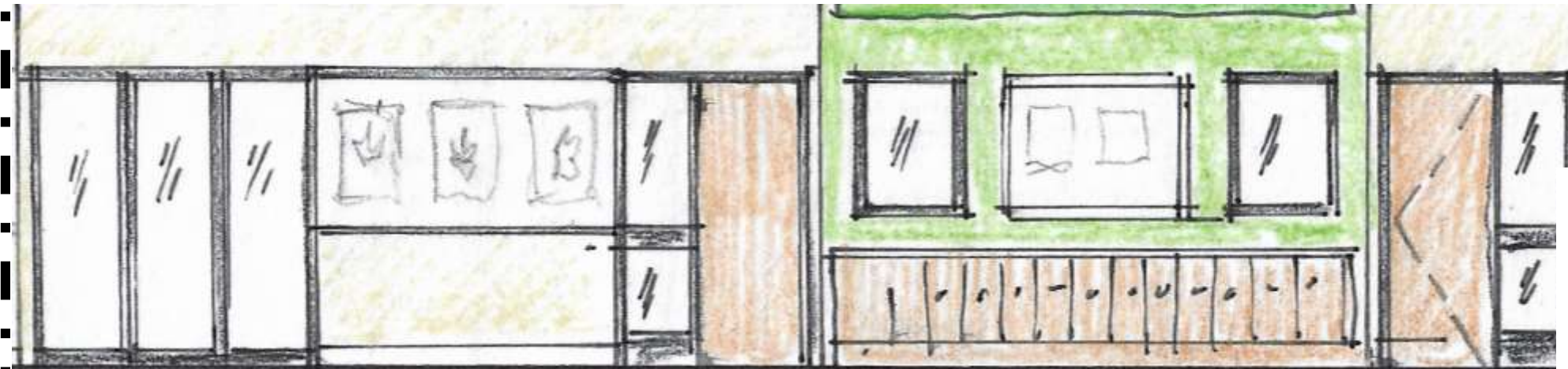
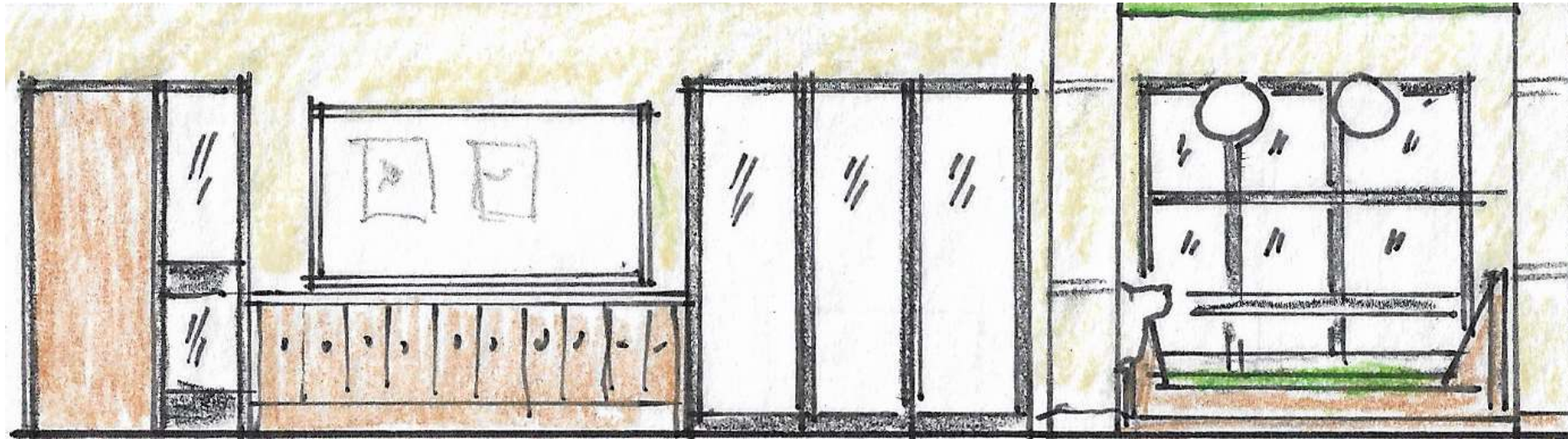




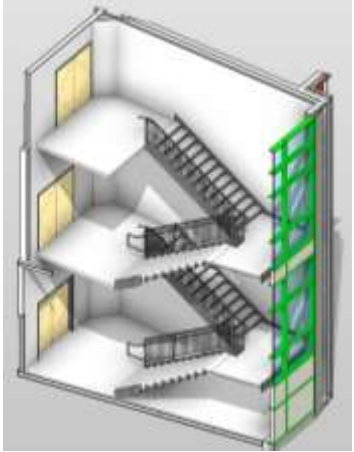
ELA



ELA – Level 2 A wing Elevation



Highlight Colors for Stairwells



Stair 1



Stair 2



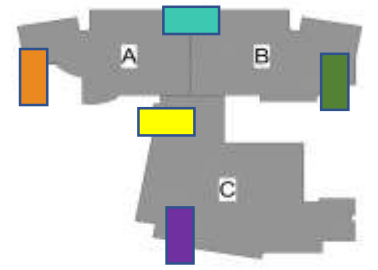
Stair 3



Stair 4

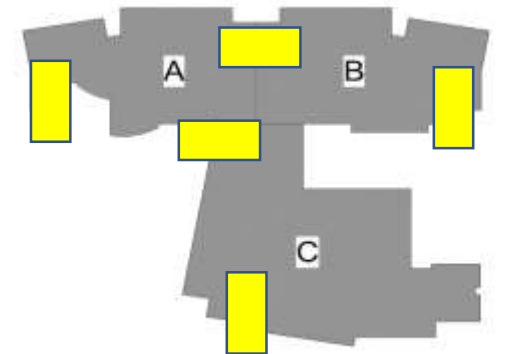
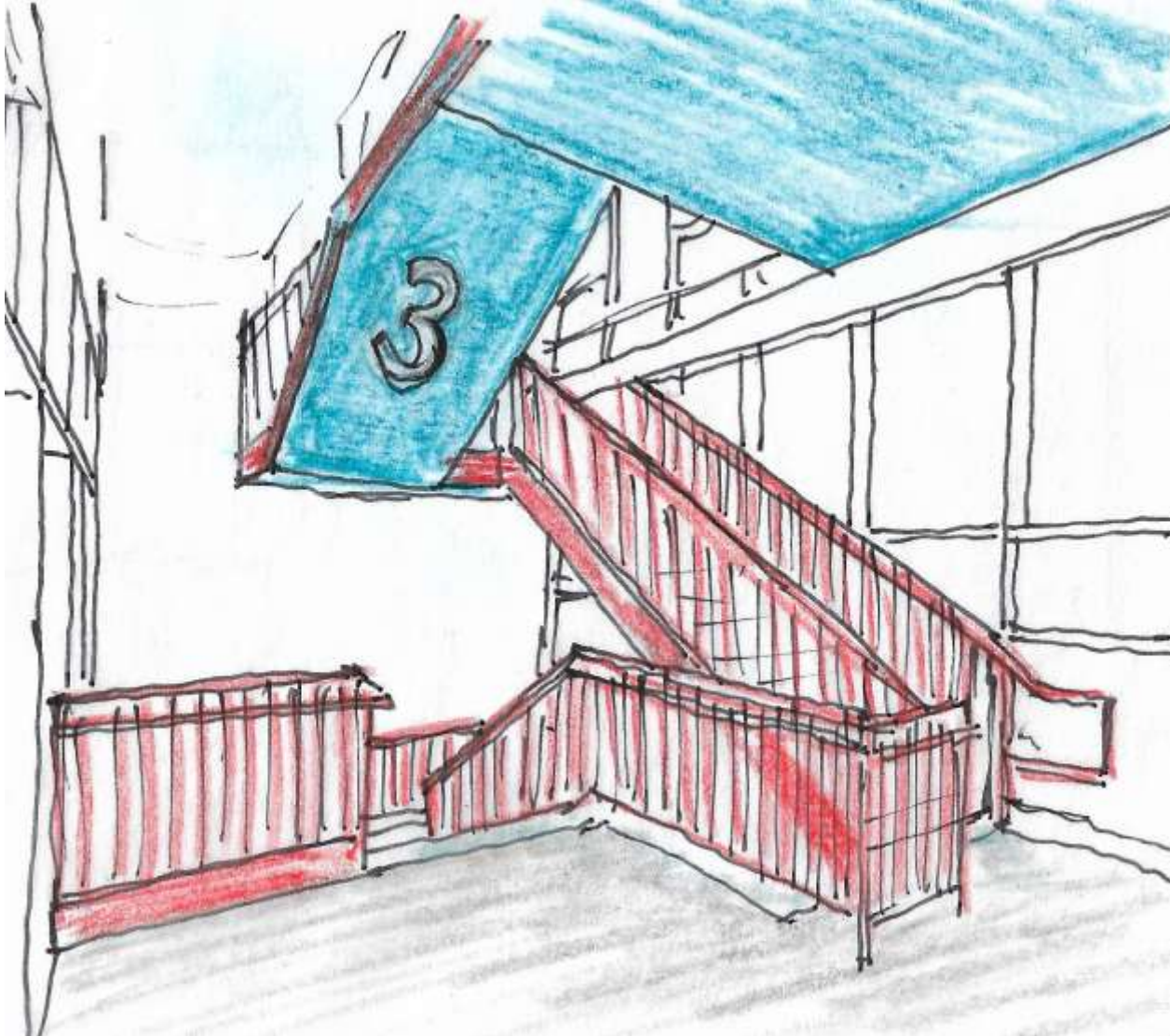


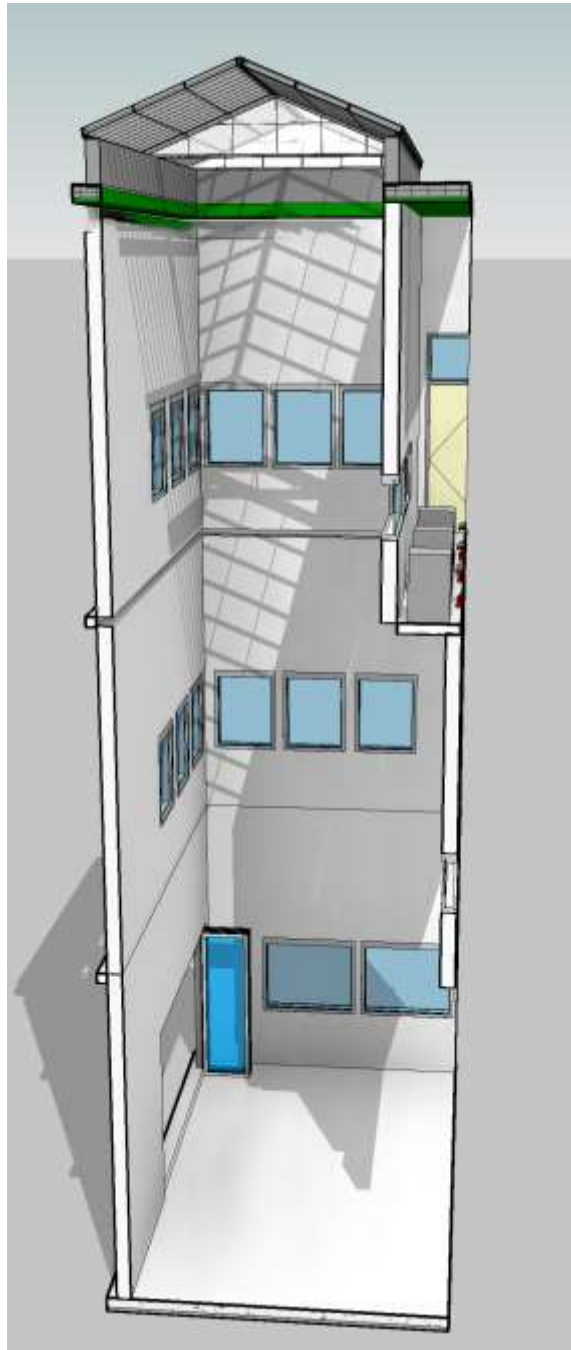
Stair 5



Stairs – inspiration

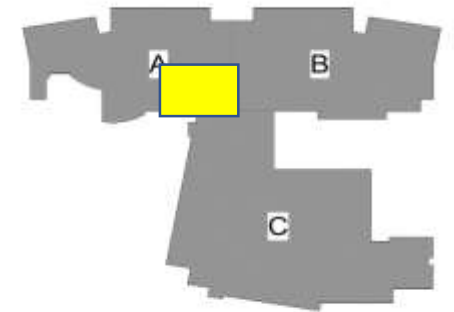
Painting the Underside





Lightwell

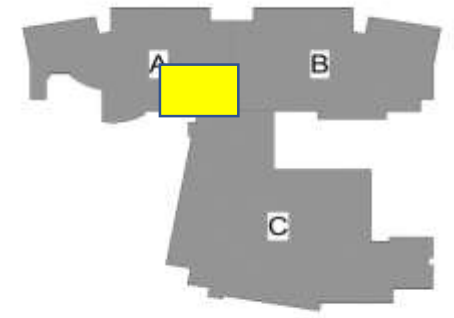
Gobo Lighting. A **gobo** is a stencil or template placed inside or in front of a light source to control the shape of the emitted light.



Lightwell

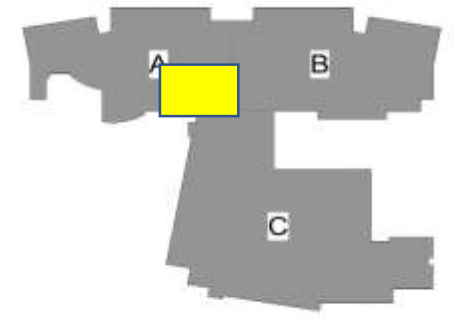


- Not an Evergreen Installation which could be updated by season, semester, or school year
- Student-driven connected to curriculum and student projects
- For gobo inserts, students could design new patterns, text, shapes, colors, etc.



Lightwell

- Potential connection to makerspace CNC machine for designing gobos
- Potential connection to video production if projectors are installed
- Skylight would have to be covered for the projection to work



Thank You!