

THE NEW W. EDWARD BALMER SCHOOL

NORTHBRIDGE, MASSACHUSETTS



SCHOOL BUILDING COMMITTEE MEETING

JANUARY 15, 2019



Massachusetts School Building Authority
Funding Affordable, Sustainable, and Efficient Schools in Partnership with Local Communities



AGENDA

DD Progress Report

Development of Site and Building Design:

- Overall Site Plan
- Playground Plans & Equipment
- Site Drainage Plan – construction phasing of the 36” storm drain (update)
- U-10 Soccer Field Update
- Structural – Façade framing
- Selected 3-D Room Data Sheets & building plan implications



DD PROGRESS REPORT

- 1/2 User Group/ Staff Meetings – Special Education Continued
- 1/7 Conf Call to discuss Site Drainage – 36” storm drain
- 1/8 Working Group – Interiors, Landscape/ Playground Design
- 1/9 Hardware/ Safety/ Security Meeting
- 1/9 User Group/Staff Meetings – O&M staff, “back of house”
- 1/14 Conf call with Eversource

- Façade Design & technical detailing continues
- Gas and Electric Load Letters
- Ongoing drawing development & detailing
- Ongoing consultant work and coordination – conf calls and model updates



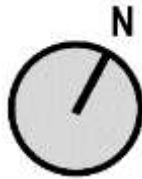
DD UPCOMING SCHEDULE

- 1/16 ANRAD (Wetlands) ConCom hearing continuation
- 1/22 User Group Meeting – Façade Design & Development,
Follow-up interior fit-up questions & discussion
- 1/23 Technical Review Meeting: Planning, Building Code, ConCom,
DPW Highway, DPW Sewer, Fire, Police, and WWC Water
- 2/5 User Group Meeting – “Clean-up Meeting”
Façade Design & Development updates
Follow-up interior fit-up questions & discussion
Follow-up interior design presentation
- 2/8 DD pricing drawings & specs due from consultants
- 2/11 – 2/21 Review, comments, and coordination for DD Pricing Set
- 2/22 **Issue DD Pricing Set to Estimator, CM**

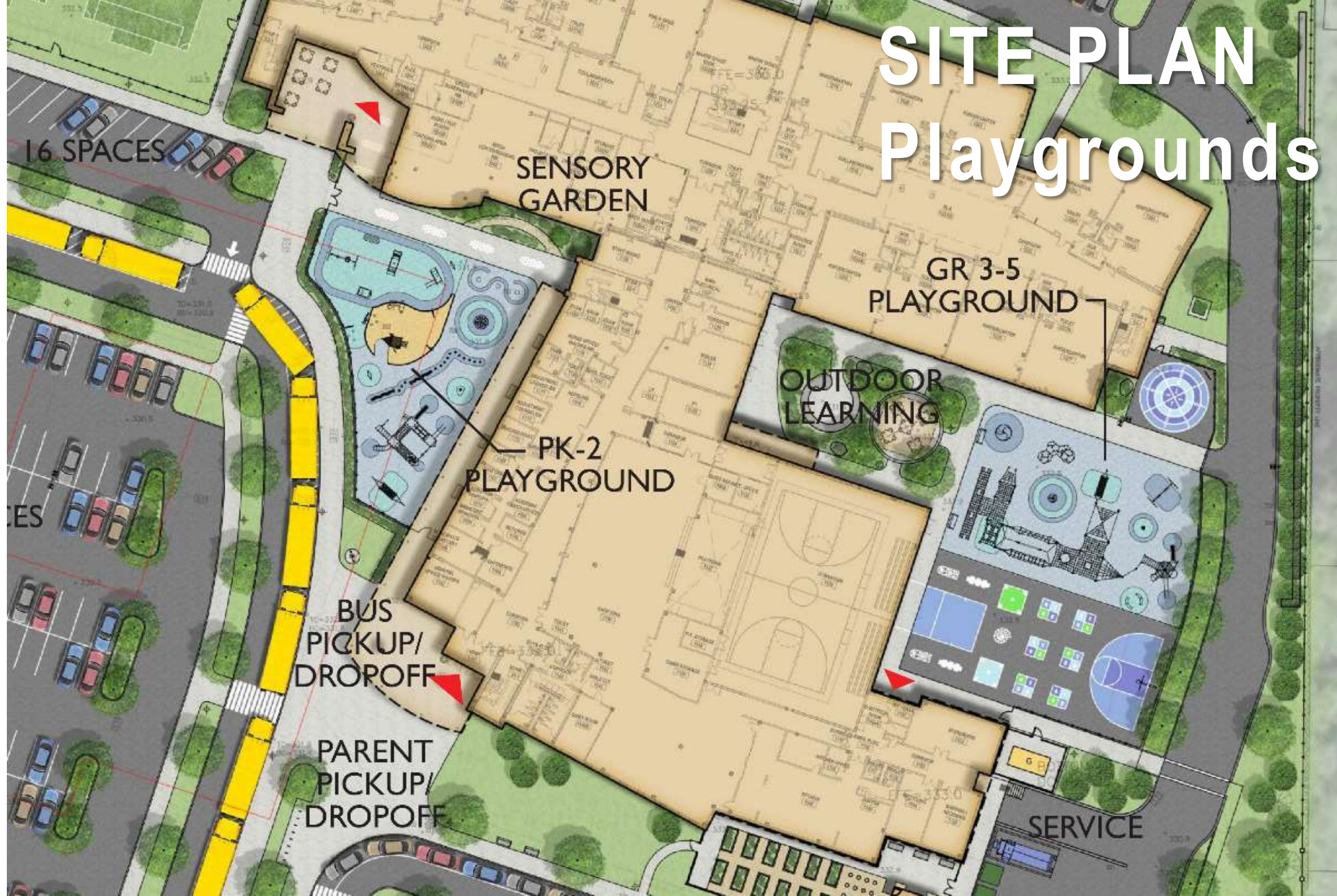
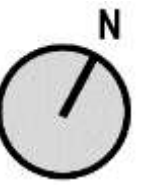


SITE PLAN

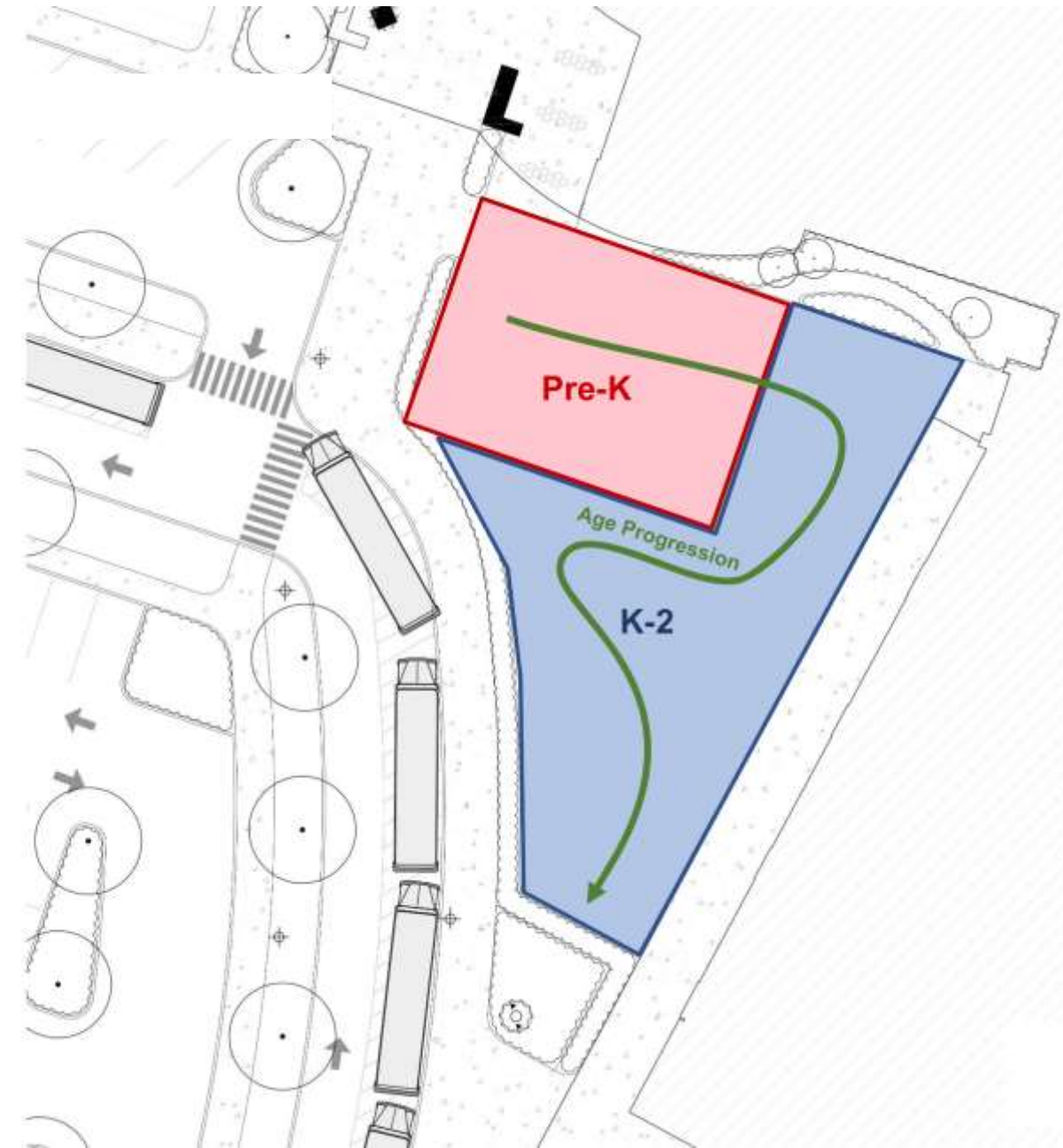
Overall View



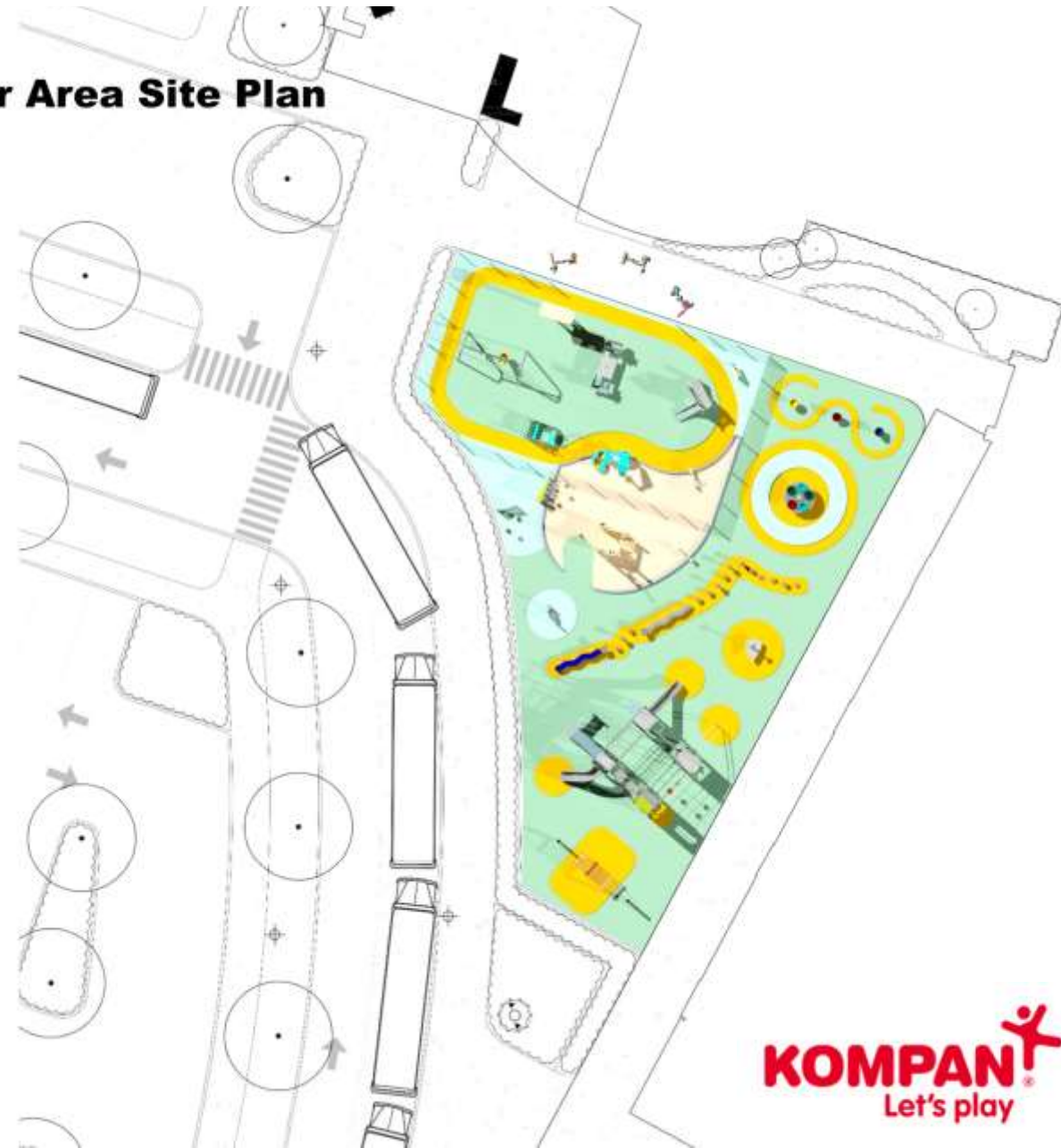
SITE PLAN Playgrounds



LOWER AGE PLAYGROUND (AGE 2-5/ 5-7)



Lower Area Site Plan

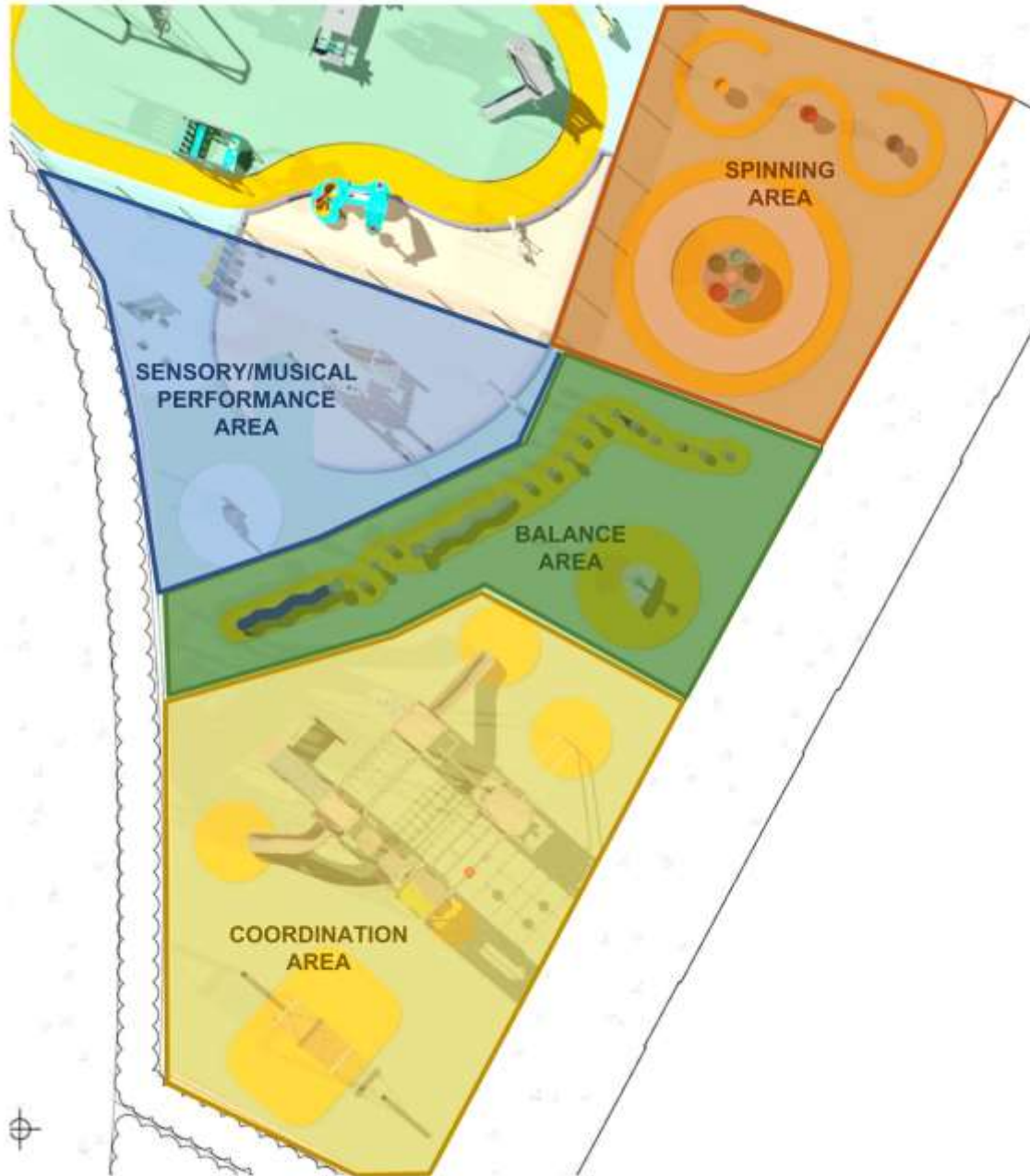


LOWER AGE PLAYGROUND (AGE 2-5)

Pre-K Area



LOWER AGE PLAYGROUND (AGE 5-7)



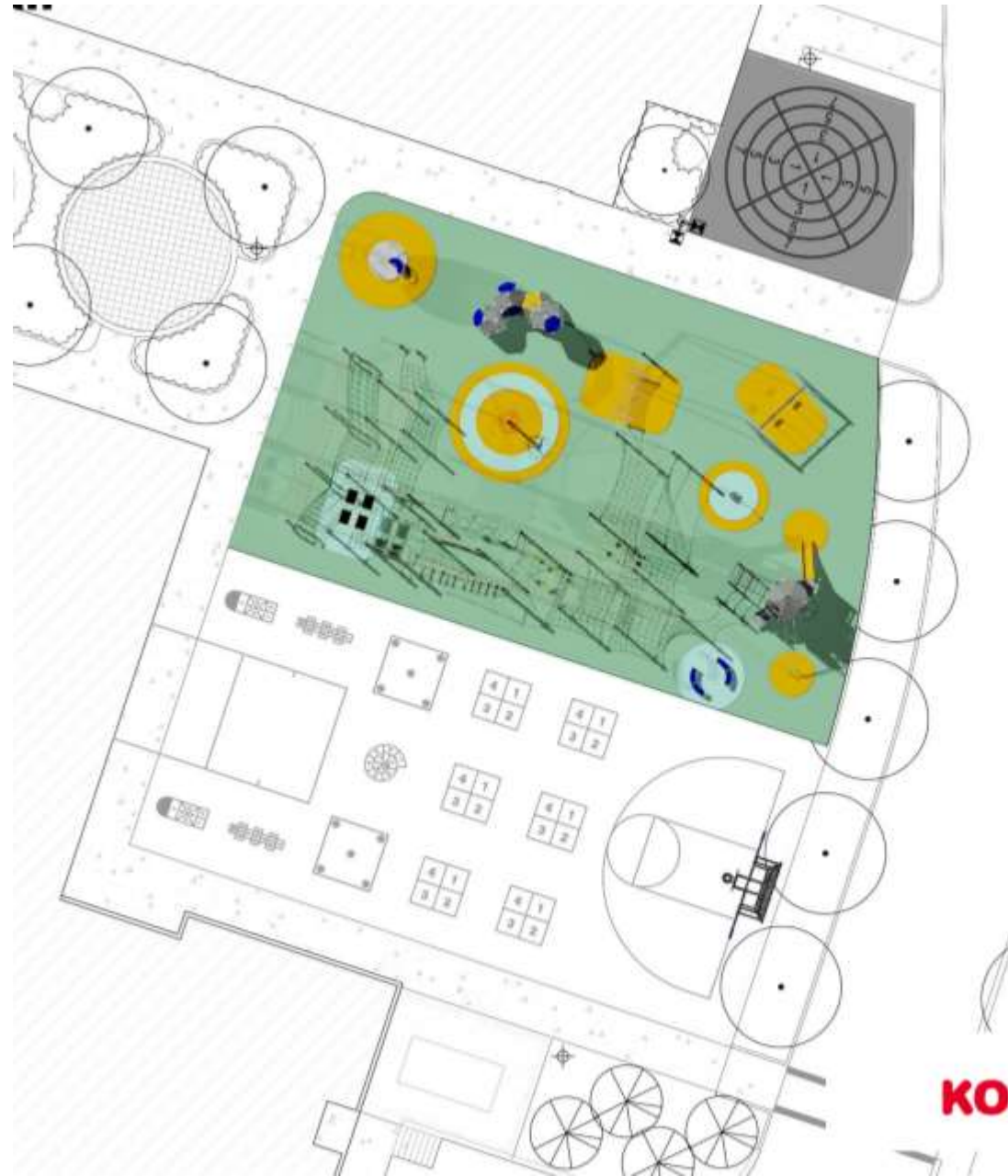
LOWER AGE PLAYGROUND (AGE 5-7)



KOMPAN
Let's play



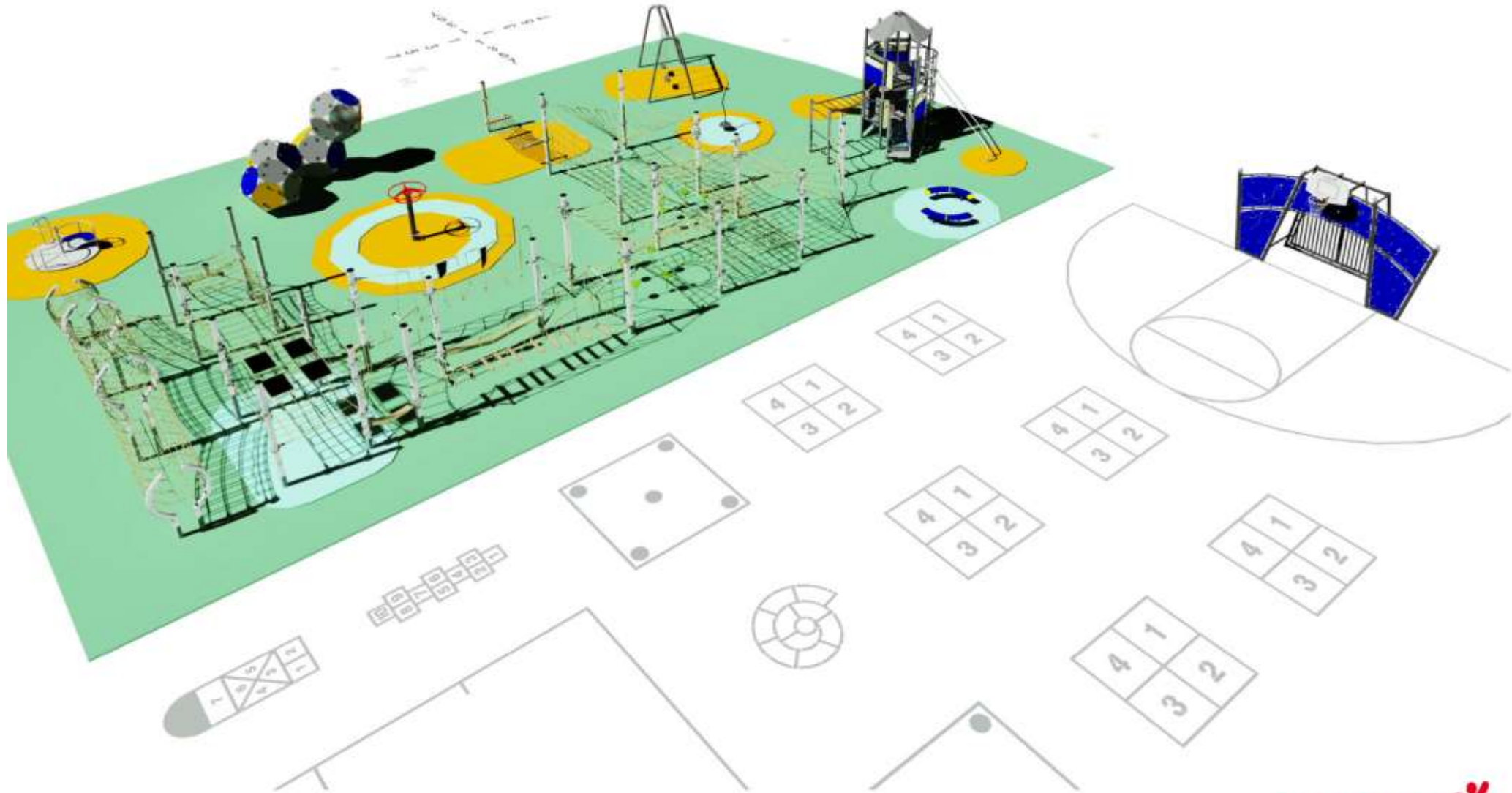
UPPER AGE PLAYGROUND (AGE 7-12)



KOMPAN
Let's play



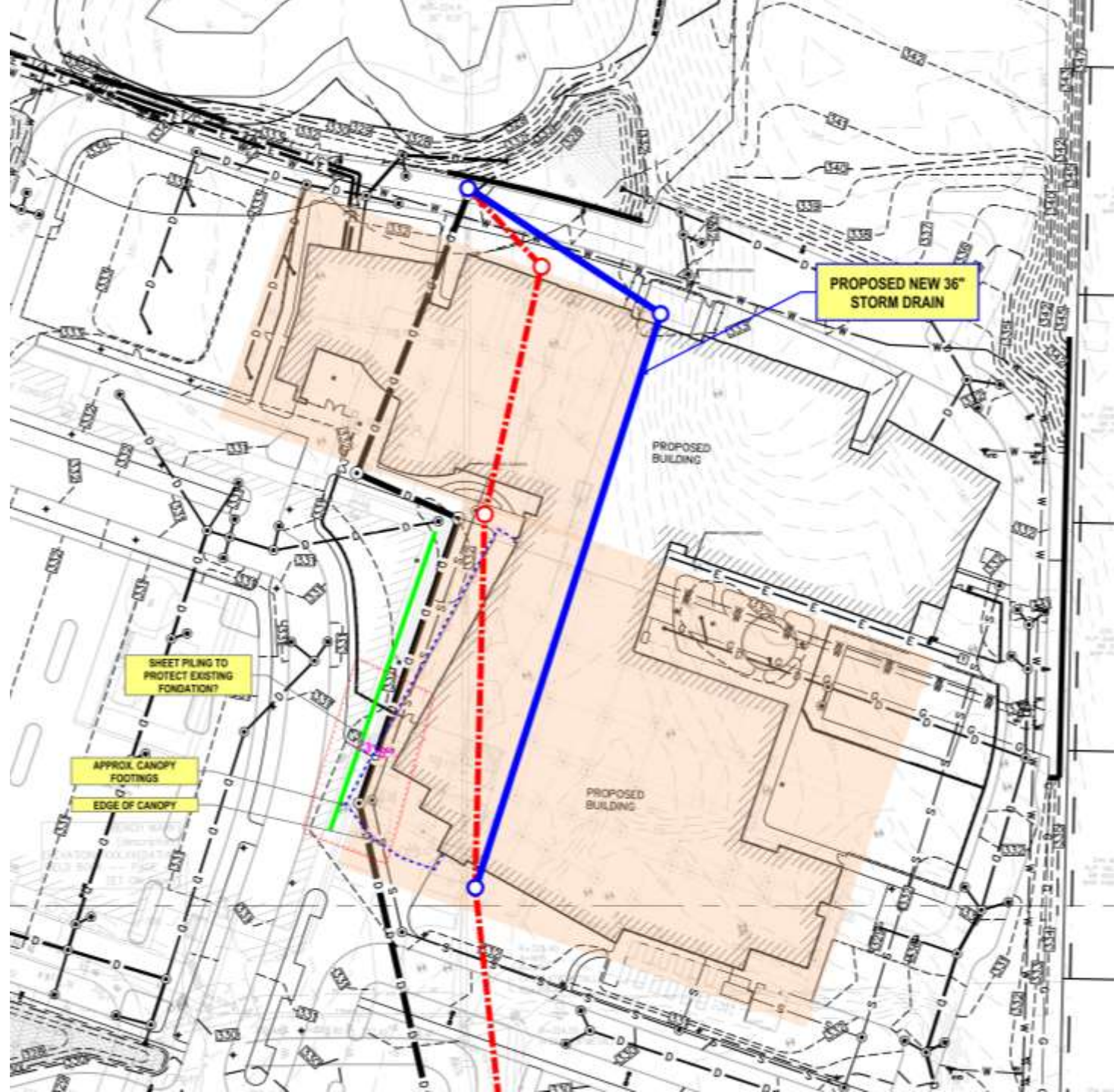
UPPER AGE PLAYGROUND (AGE 7-12)



SITE DRAINAGE DESIGN (UPDATE)

36" Storm Drain:

- Decided SD route too crowded between existing and new building
- Discussed alternate route 1 (red) – structural conflicts
- Proposed alternate route 2 – FBI is pricing & comparing buildability of both options





U-10 FIELD GRADING DESIGN (UPDATE)

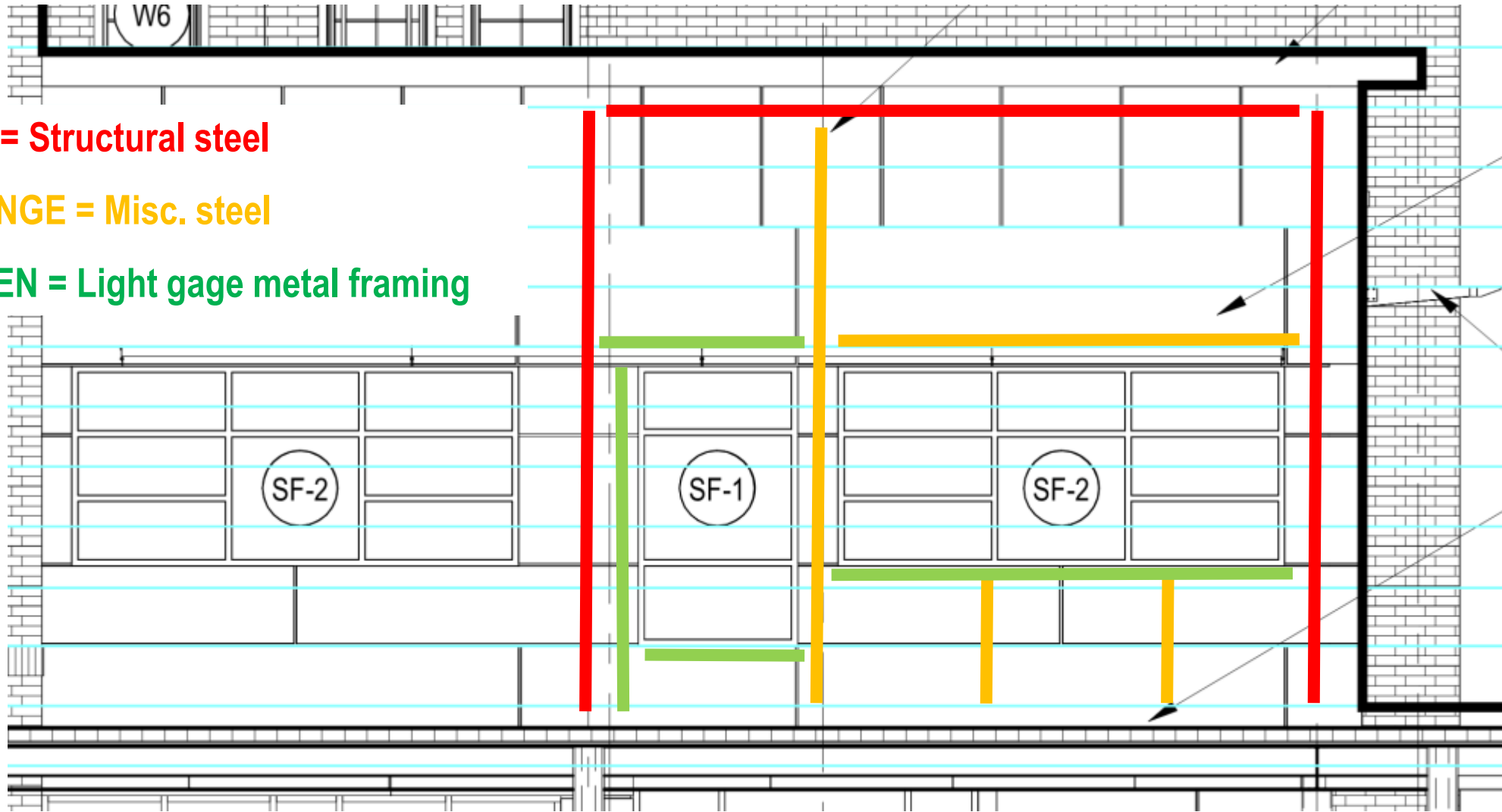
- Investigated moving field west to increase buffer on east property line
- Increases cut (4' lower from SD proposed)
- Leaves 25' wide buffer – this is roughly 3-5 mature tree trunks width spared
- Increases retaining wall need significantly
- Right on top of 35' no-build line, steep bank
- Increased cost, not recommended

STRUCTURAL – FAÇADE DESIGN

RED = Structural steel

ORANGE = Misc. steel

GREEN = Light gage metal framing



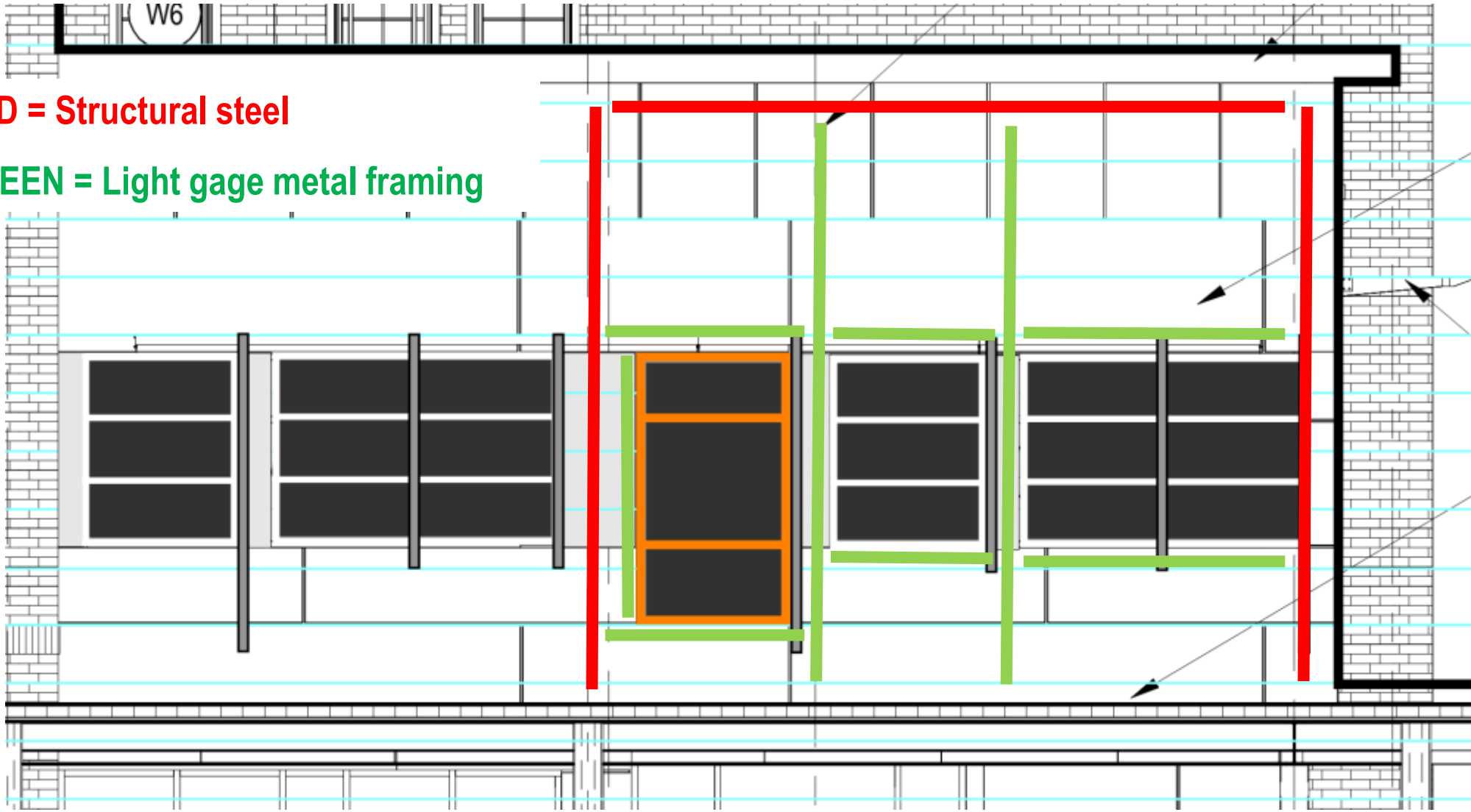
- Current window configuration demands too much misc. steel



STRUCTURAL – FAÇADE DESIGN

RED = Structural steel

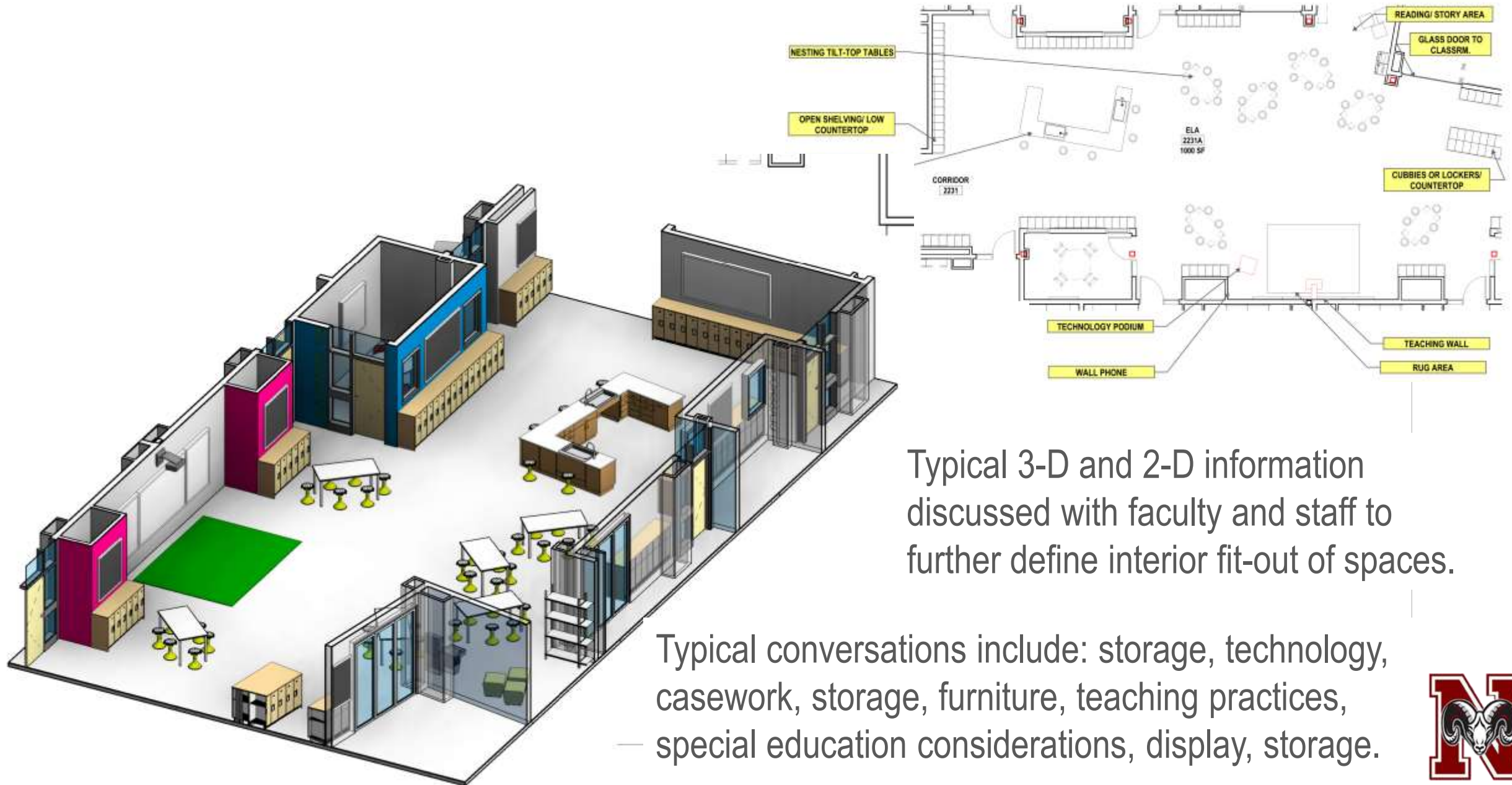
GREEN = Light gage metal framing



- Resolved issue by splitting long horizontal window: 1 lite/ 2 lites



USER GROUP MEETINGS – ROOM DATA SHEETS



Typical 3-D and 2-D information discussed with faculty and staff to further define interior fit-out of spaces.

Typical conversations include: storage, technology, casework, storage, furniture, teaching practices, — special education considerations, display, storage.





Thank you!
Questions? Comments?

