

# THE NEW NORTHBRIDGE ELEMENTARY SCHOOL

WHITINSVILLE, MASSACHUSETTS



## NEIGHBORS INFORMATION PRESENTATION

JUNE 8, 2019



Massachusetts School Building Authority  
*Funding Affordable, Sustainable, and Efficient Schools in Partnership with Local Communities*



# AGENDA

- **Site Plan Overview**
- **Exterior Design Images**
- **Site Safety**
- **Schedule & Logistics**
- **Project Phasing & Site  
Circulation Diagrams**
- **Project Management**
- **Communication Channels**





# SITE & LANDSCAPE DESIGN PLAN

- Two site entrances
- Two-way circulation
- Emergency access behind school
- 246 parking spaces
- All athletic amenities reconstituted on-site – no net loss of fields





# SITE DESIGN PLAN (DETAIL)

- Separate bus and parent drop-off loops, Pre-K park-and-drop lot
- Protected pedestrian circulation, minimal crossings
- Lower and Upper age-specific playgrounds
- Outdoor learning spaces





# EXTERIOR MATERIALS



APPROACH TO  
MAIN ENTRANCE





AERIAL VIEW OF GRADES PK-2 PLAYGROUND





VIEW OF GRADES 3-5 PLAYGROUND





OVERALL SOUTHWEST AERIAL VIEW



# WE WILL ENSURE

- o SAFETY WILL BE A TOP **PRIORITY**
- o CONSTRUCTION WILL BE **SEPARATED** FROM SCHOOL **ACTIVITIES**
- o CURRENT **SCHOOL TRAFFIC** WILL CONTINUE **UNINTERRUPTED**
- o DAILY **COMMUNICATION** WITH THE SCHOOL AND NEIGHBORS
- o WE WILL **CLOSELY MONITOR** AND **MINIMIZE THE IMPACT OF ALL** DUST, NOISE, AND VIBRATION FOR THE  
NEIGHBORS AND THE SCHOOL
- o ALL **CONSTRUCTION TRAFFIC** AND **DELIVERIES** WILL BE **PROHIBITED** DURING SCHOOL DROP OFF AND  
PICK UP HOURS
- o ALL CONSTRUCTION PARKING WILL BE **ON-SITE, WITHIN THE CONSTRUCTION ZONE**
- o ONLY **CORI APPROVED** WORKERS WILL BE ON-SITE





# CONSTRUCTION TIMELINE

## June 2019

- o Mobilize
- o Install erosion controls, site fence
- o Begin clearing and grubbing
- \*\* Please relocate any items beyond property line by June 28, 2019

## July 2019

- o Continue earthwork, logistics work around existing school

## August 2019

- o Complete logistical reconfiguration, continue earth moving

## September 2019 – December

- o Earthwork, foundations

## December 2019 – March 2020

- o Foundations, steel erection

## March 2020 – April 2021

- o Complete Phase 1 Construction / New Building

## June 2021 – December 2021

- o Abate / demolish Balmer, complete Vail Restoration

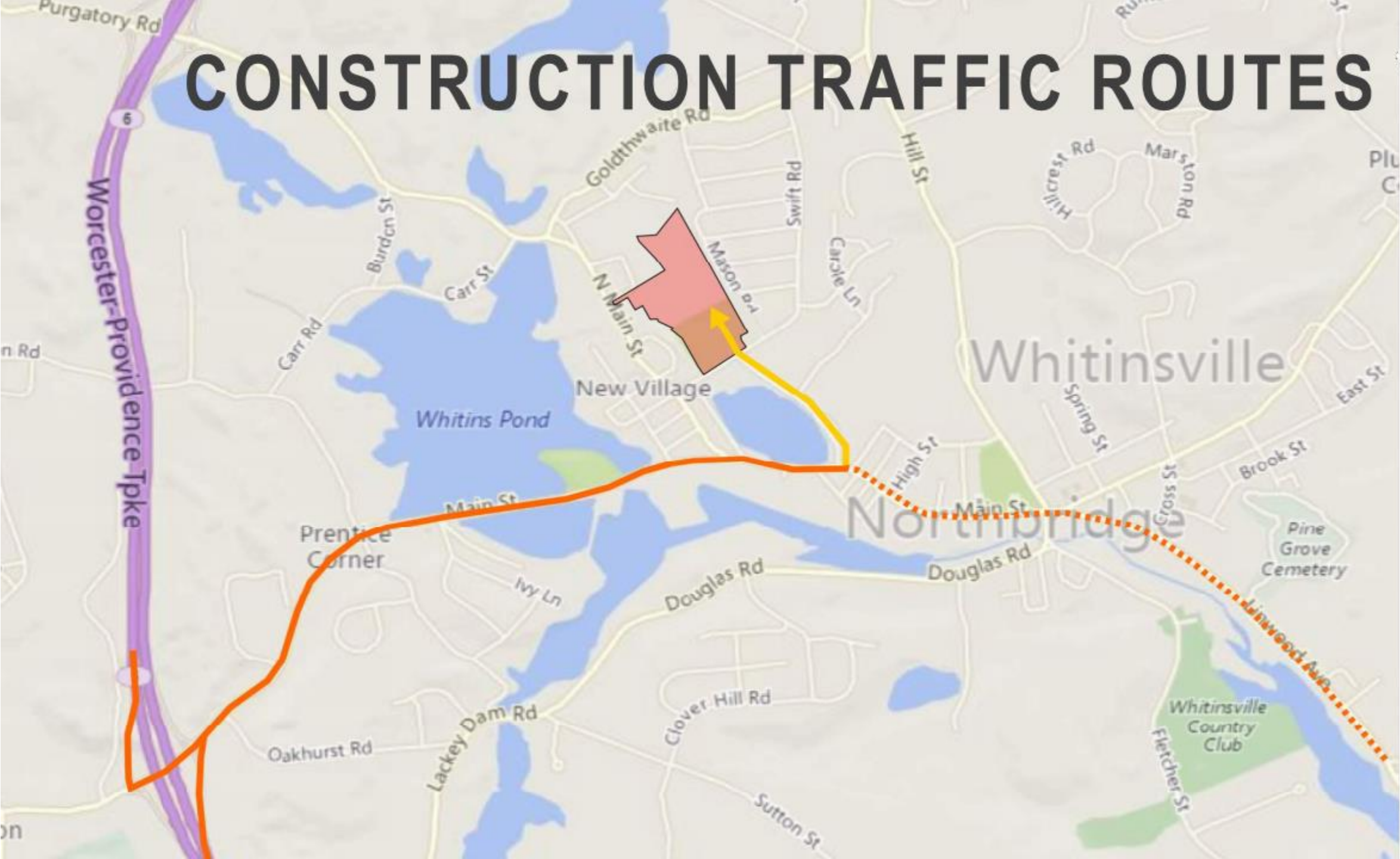
## Spring 2022

- o Plant final fields





# CONSTRUCTION TRAFFIC ROUTES

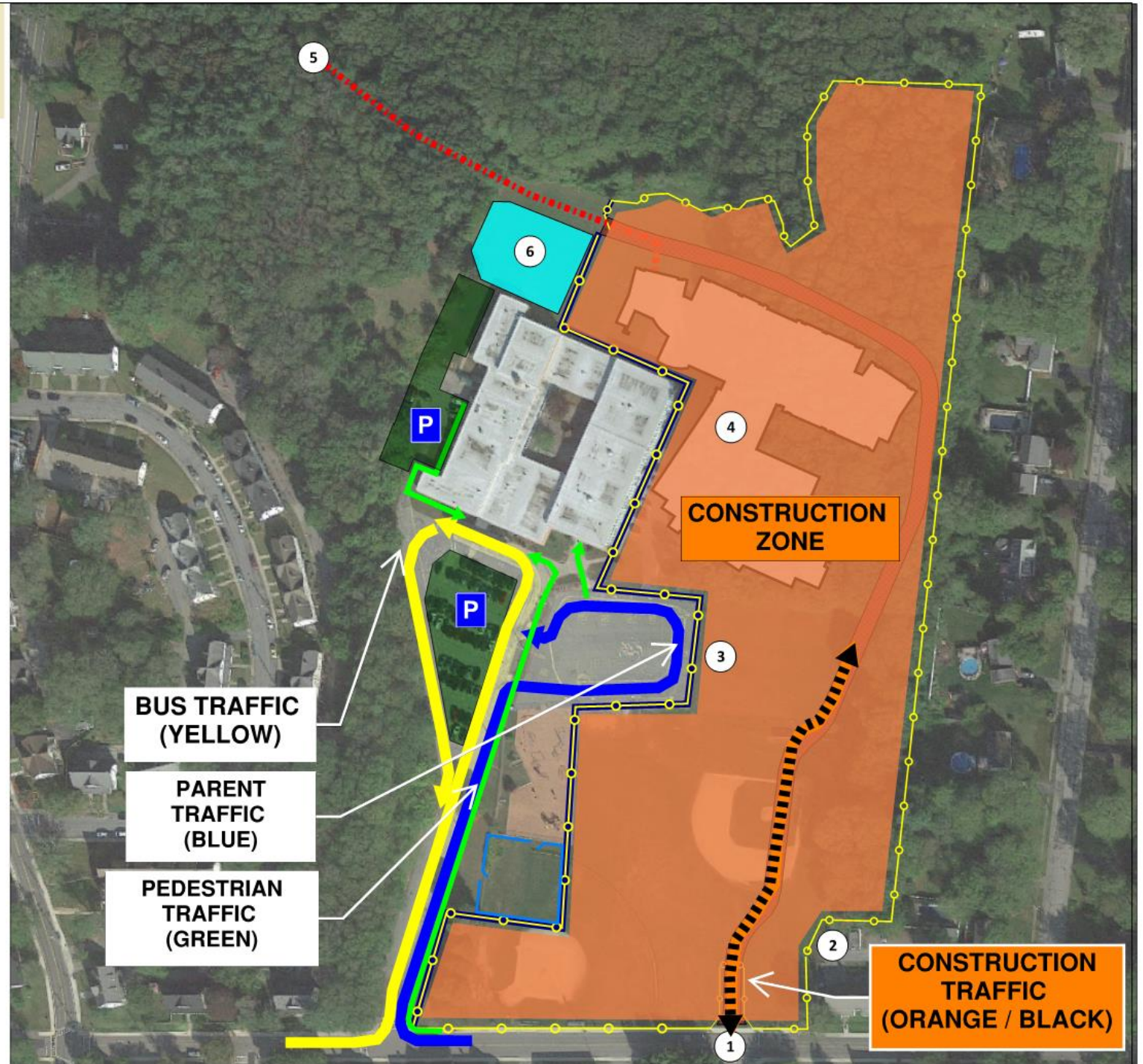




**Town of Northbridge  
Northbridge Elementary School  
Logistics Setup 1: New Building Construction  
Summer 2019 - Spring 2021**

**LEGEND**

- 1 - Main construction entrance**
- 2 - 8' Construction fence w/ scrim**
- 3 - 6' Construction fence w/ scrim on top of jersey barriers**
- 4 - New school building footprint**
- 5 - Connection pathway for electrical and tel/com**
- 6 - School muster area**





**Town of Northbridge  
Northbridge Elementary School  
Logistics Setup 2A: New School Substantial  
Completion & Existing School Demo  
Start of Summer 2021**

**LEGEND**

- 1 - Main construction entrance**
- 2 - Construction fence**
- 3 - 6' Construction fence w/ scrim on top of jersey barriers**
- 4 - Temporary school parking**
- 5 - Existing school abatement / demolition**
- 6 - Secondary / emergency access gate**
- 7 - New school building footprint**

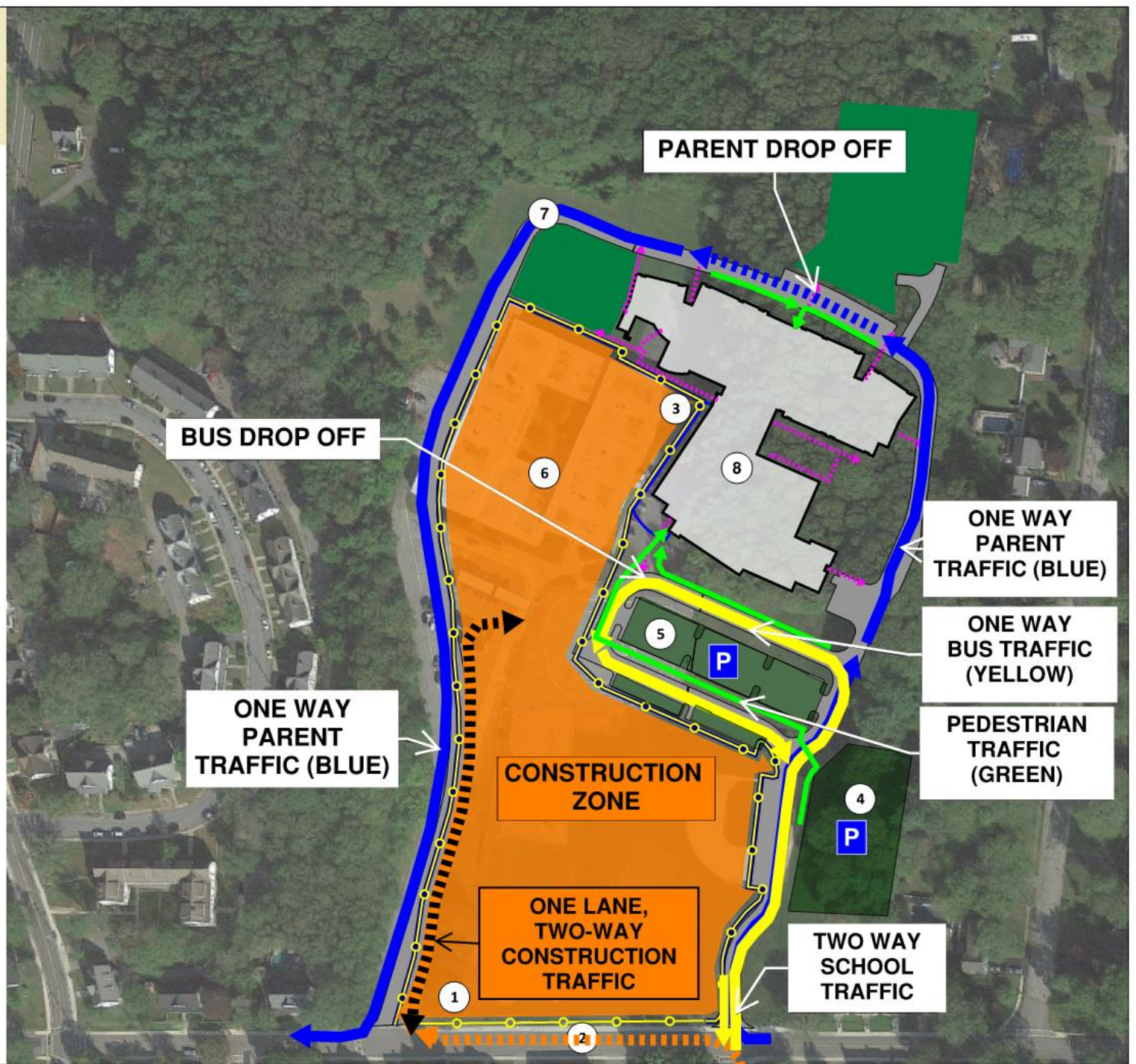




**Town of Northbridge  
Northbridge Elementary School  
Logistics Setup 2B: School Opening &  
Continuation of Site Finishes  
End of Summer into Early Fall 2021**

## LEGEND

- 1 - Main construction entrance**
- 2 - Construction fence**
- 3 - 6' Construction fence w/ scrim on top of jersey barriers**
- 4 - Temporary school parking**
- 5 - West side of south parking lot completes to provide full loop for start of school year**
- 6 - Existing school building is demolished**
- 7 - New loop road is complete for start of school year**
- 8 - New school building footprint**





Town of Northbridge  
Northbridge Elementary School  
Logistics "Mini" Setup 3: Small U8 Fields at  
Former Temp. Parking  
Fall 2021 / Spring 2022

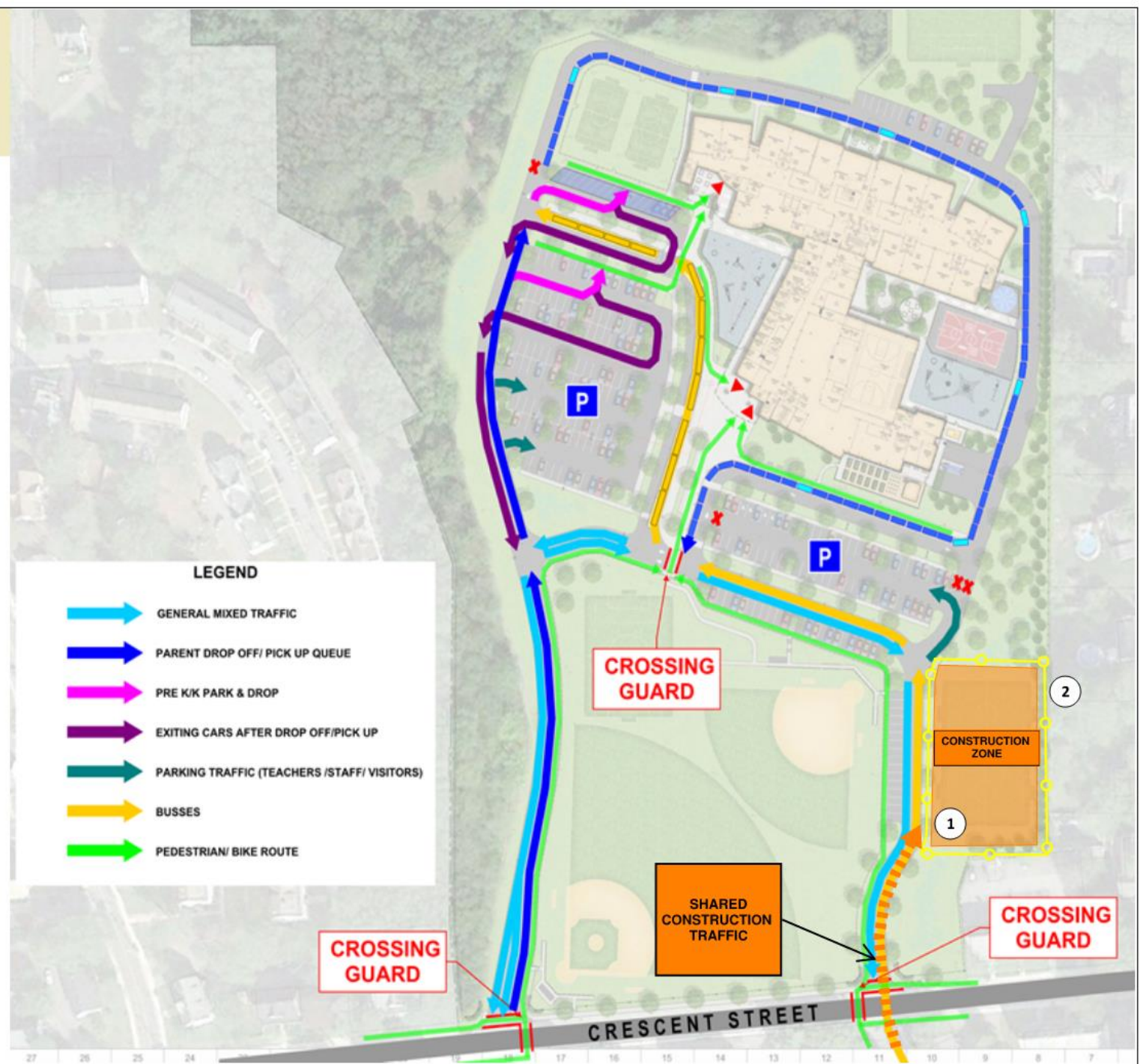
LEGEND

1 - Construction Entrance

2 - Construction fence around U8  
soccer fields

SEPARATED PATHS:

- Parent Drop-off
- Bus/Van
- Pre-K/ K
- Cars parking
- Pedestrian/ Bike

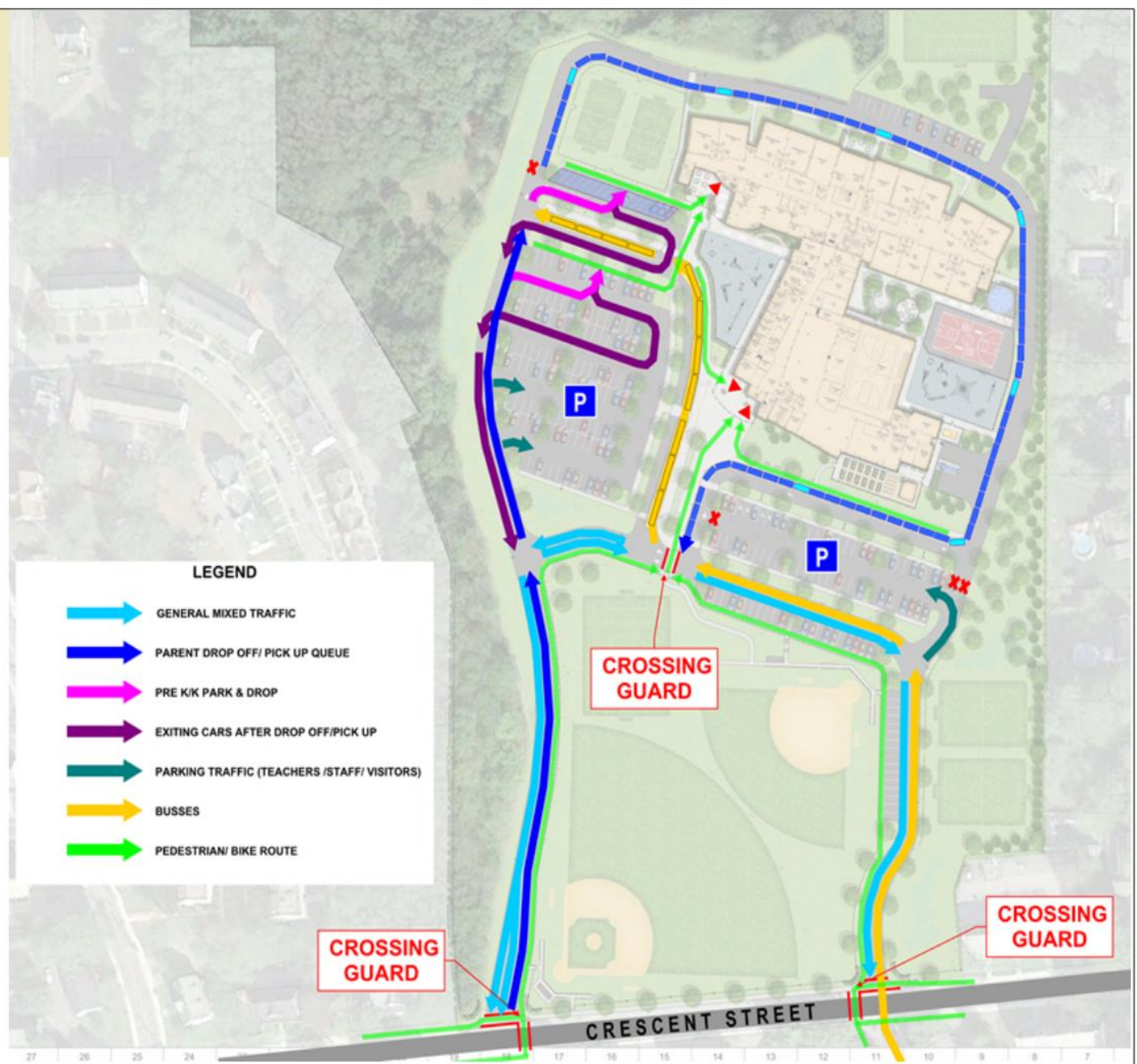




## SEPARATED PATHS:

- Parent Drop-off
- Bus/Van
- Pre-K/ K
- Cars parking
- Pedestrian/ Bike

2





# POINTS OF CONTACT

## **Fontaine Bros., Inc. – Construction Manager**

Mike Cavanaugh – Lead Superintendent

[MCavanaugh@FontaineBros.com](mailto:MCavanaugh@FontaineBros.com) || 413-246-4007

## **SMMA – Owner's Project Manager**

Tony Dias - On Site Representative

[adidas@smma.com](mailto:adidas@smma.com) || 508-951-2229







***Thank You!***