

# THE NEW **W. EDWARD BALMER SCHOOL**

## WHITINSVILLE, MASSACHUSETTS



## SCHOOL BUILDING COMMITTEE

## OCTOBER 1, 2019



NORTHBRIDGE  
PUBLIC SCHOOLS



Massachusetts School Building Authority  
*Funding Affordable, Sustainable, and Efficient Schools in Partnership with Local Communities*



# AGENDA

- Oak Tree at SE property corner
- Building Refinements
- Project Construction Update





# EXISTING OAK AT SE CORNER

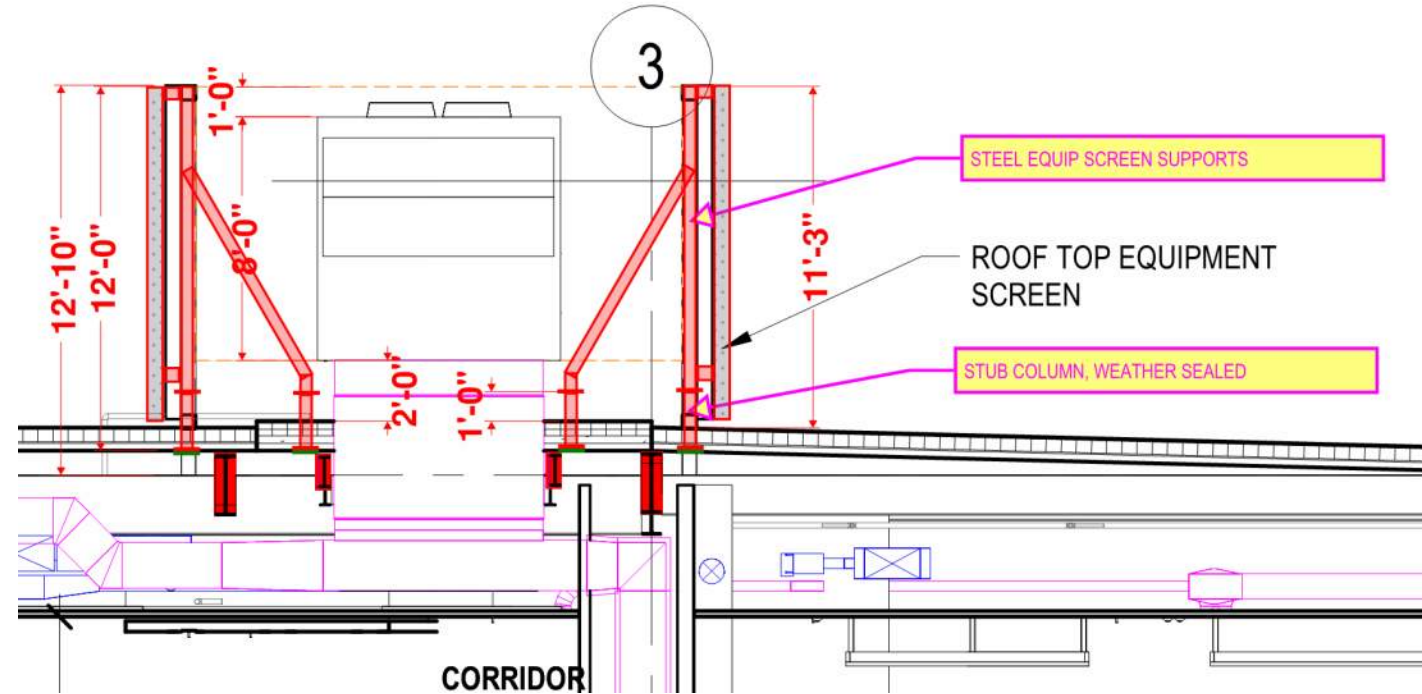




# ROOFTOP MECHANICAL SCREENS

Emailed with Acoustical Consultant:

- Study assumed mech units not running at full power (noise) at night – “diversity” concept
- Units modeled at 44dB at property line – threshold is 40dB
- Consultant is “very sure” the full acoustically-absorptive screens will be needed on all rooftop units



# CONSTRUCTION UPDATE



View of Underground Detention Basin #2  
– under U-8 soccer fields





# CONSTRUCTION UPDATE



Connection of water line in Crescent Street





# CONSTRUCTION UPDATE

Retaining Wall #2 (east) materials on site





# CONSTRUCTION UPDATE



Storm drainage lines  
continue to be installed





# CONSTRUCTION UPDATE



Filling operation within building footprint continues





# CONSTRUCTION UPDATE



Filling operation within building footprint continues





# QUESTION AND ANSWER

