

THE NEW W. EDWARD BALMER SCHOOL

WHITINSVILLE, MASSACHUSETTS



SCHOOL BUILDING COMMITTEE

FEBRUARY 12, 2020



Massachusetts School Building Authority
Funding Affordable, Sustainable, and Efficient Schools in Partnership with Local Communities

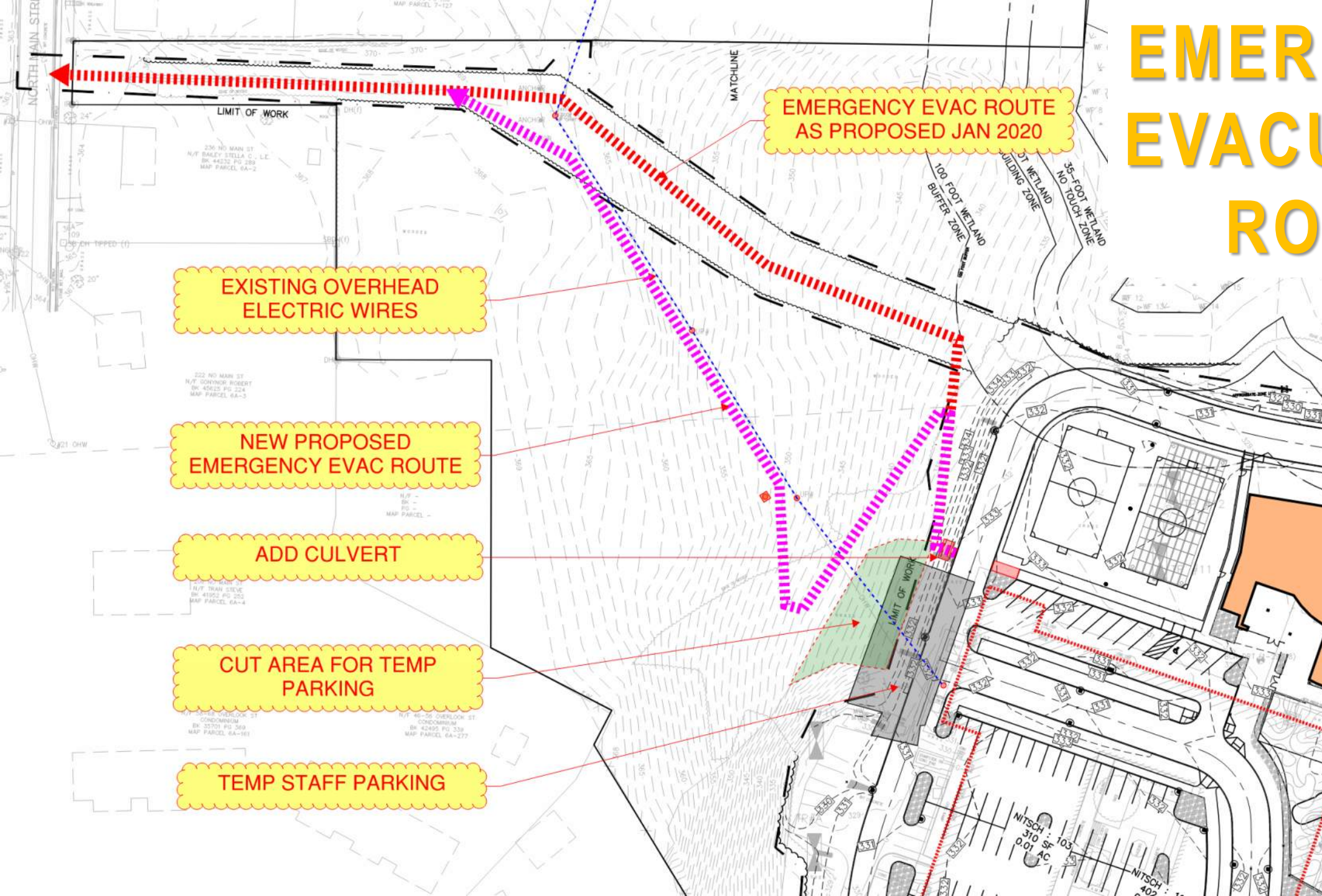


AGENDA

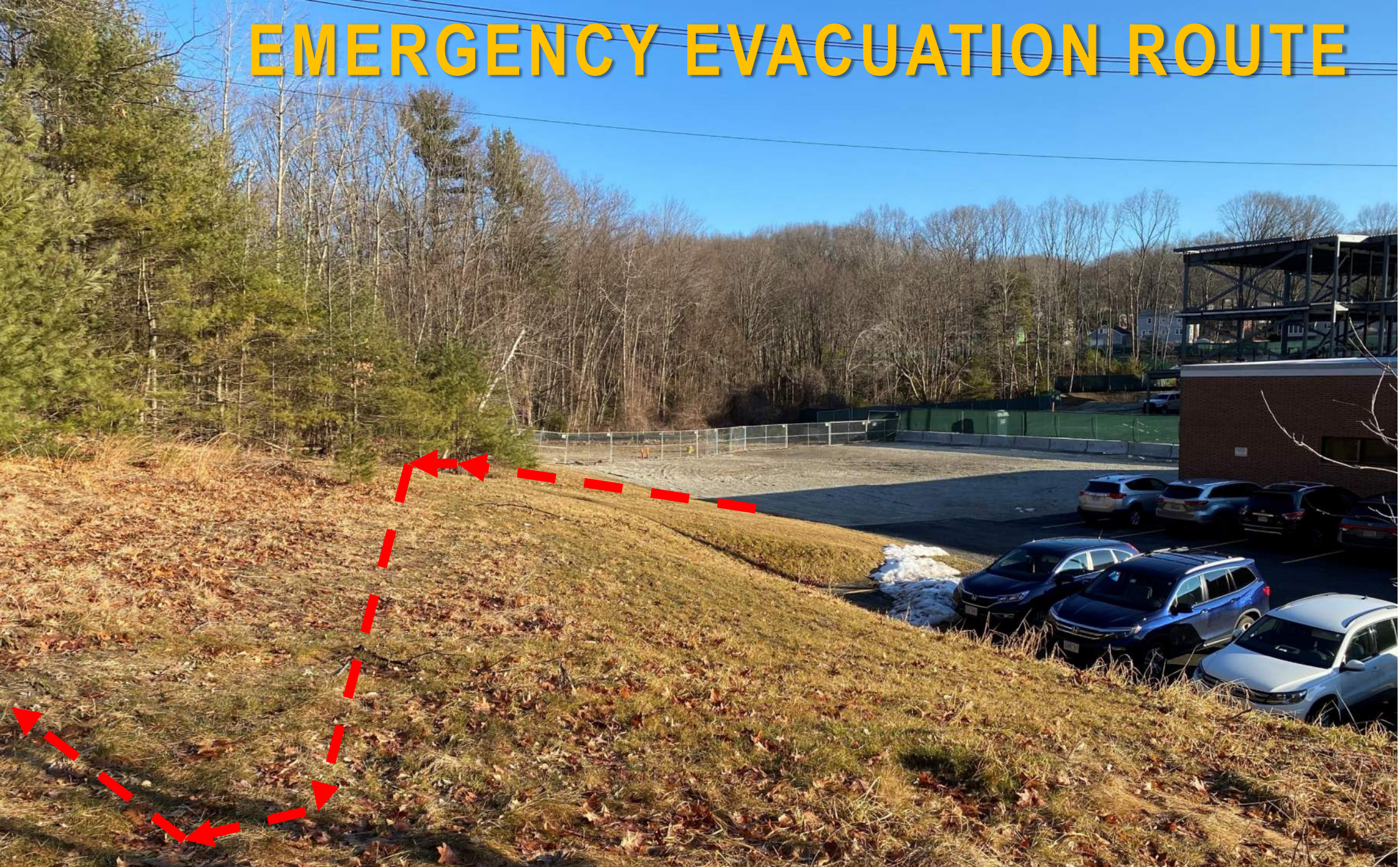
- Neighbor's Planting Requests (see attached)
- Emergency Evacuation Route to west of school
- Project Construction Update



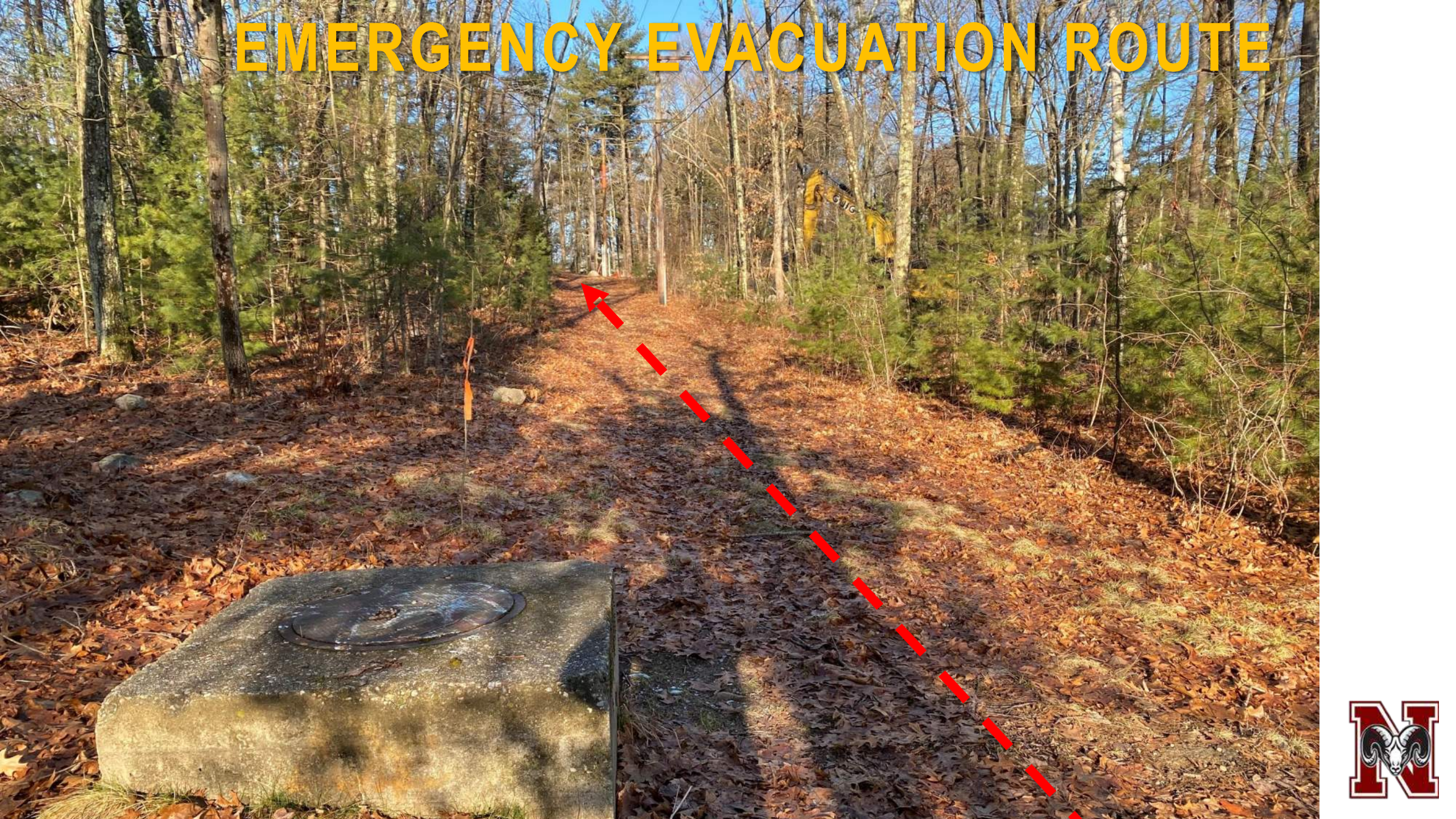
EMERGENCY EVACUATION ROUTE



EMERGENCY EVACUATION ROUTE



EMERGENCY EVACUATION ROUTE



EMERGENCY EVACUATION ROUTE



CONSTRUCTION UPDATE



FONTAINE BROS., INC.

CONSTRUCTION MANAGERS
GENERAL CONTRACTORS



CONSTRUCTION UPDATE



Compacting soils around deep foundations at 36" drain pipe, C Wing.



CONSTRUCTION UPDATE



Canopy foundations underway, C Wing

CONSTRUCTION UPDATE



Foundations waterproofed, C Wing

CONSTRUCTION UPDATE



West side of
C-Wing
foundations

CONSTRUCTION UPDATE



Electrical
secondary conduits
entering the
building at the Main
Electrical Room





Setting the new pole for building electrical service



Electrical secondary conduits heading toward the main transformer



CONSTRUCTION UPDATE



Crane arrives and gets set up

CONSTRUCTION UPDATE



Setting steel columns, A Wing



CONSTRUCTION UPDATE



View of building site from NW utility corridor

CONSTRUCTION UPDATE



Steel erection continues, A Wing



CONSTRUCTION UPDATE



Steel pieces picked by crane, set in place



CONSTRUCTION UPDATE



A Wing steel substantially complete 2/5/20

CONSTRUCTION UPDATE



East retaining wall extension completed



CONSTRUCTION UPDATE

A wide-angle photograph of a construction site. In the foreground, a long, low concrete retaining wall is under construction, filled with gravel. To the left of the wall is a muddy area with two orange survey poles. To the right, several large concrete blocks are stacked on the ground. In the background, there are more construction materials, a yellow excavator, and a green fence.

North retaining wall underway

QUESTION AND ANSWER

