

THE NEW NORTHBRIDGE ELEMENTARY SCHOOL

WHITINSVILLE, MASSACHUSETTS



SCHOOL BUILDING COMMITTEE MEETING

JULY 20, 2021

AGENDA

1. Call to Order
2. Attendance
3. Statement of Audio and Video Recording
4. Public Comment

Comments for this meeting may be emailed in advance of the 6:30 p.m. start time to sbc@nps.org.

All comments will be recorded in the record, and all attempts will be made to mention them live during the meeting. Any emails received during the meeting before the public comment period ends will also be attempted to be mentioned.

5. Approval of Minutes
6. Approval of Invoices and Commitments
7. FF&E Procurement Update
 - Tractor and Snowplow Update
 - Outdoor Storage Building Update
8. Site Entry Masonry Gateway Update
9. Construction Update
 - Dedication Plaque
 - Overlook Street Properties Update
 - Snack Shed Update
10. Time Capsule Working Group Update
11. Building Dedication Ceremony Working Group Update
12. New or Old Business
13. Committee Questions
14. Next Meeting: August 17, 2021
15. Adjourn



FF&E UPDATE

- Furniture deliveries are complete, except for the Cafeteria tables.
- Furniture has been assembled and placed in rooms
- Much of the Equipment has been delivered, and is in process of being placed around the building
- D+W punch list ongoing
- A few more equipment adds included: additional radios, banquet tables, and equipment for OT/PT and Special Ed, Maker Space, Kitchen, and Custodial.



FIXTURES AND EQUIPMENT ACTUALS BY CATEGORY

CATEGORY	6/24/21 ACTUAL	7/20/21 ACTUAL	VARIANCE
General Equipment	\$84,024	\$86,252	\$2,228
Kitchen Smallwares	\$10,770	\$10,817	\$47
Gymnasium Fitness Equipment	\$8,576	\$8,576	
OT/PT / Adaptive/ Sp.Ed.	\$30,855	\$35,811	\$4,956
Health Equipment	\$16,854	\$16,854	
Custodial Equipment	\$103,634*	\$112,242*	\$8,608
Maker Space Equipment	\$22,356	\$32,641	\$ 10,285
Art Equipment	\$33,388	\$33,388	
Music Equipment	\$29,122	\$29,122	
Library/ A-V Room Equipment	\$2,182	\$2,182	
PO FFE 029 – Library Chairs		\$1,415	\$1,415
PO FFE 030 - Table Totes	\$30,861	\$30,861	
Equipment Total (Final)	\$372,622	\$400,161	\$27,539

** Does NOT include John Deere 1585 multi-use maintenance tractor and zero-turn mower - \$51,820*



FURNITURE, FIXTURES AND EQUIPMENT OVERALL BUDGET UPDATE

MSBA Overall FF&E budget	\$1,648,000
Actual Furniture Cost	\$1,165,122
Equipment Budget (FF&E funds remaining)	\$482,878
Actual Equipment Cost including new variances	\$400,161
Budget Remaining (Contingency)	\$82,717



FURNITURE, FIXTURES AND EQUIPMENT BUDGET “KNOWN UNKNOWNs”

FF&E Budget Remaining (from previous blue table)		\$82,717
BearCom: Radio Signal Repeater and added Programming		\$9,413
John Deere 1535 machine + attachments, and Husquvarna ZT Mower		\$51,820
Budget Remaining (Contingency)		\$21,484



CUSTODIAL LARGE EQUIPMENT RECOMMENDATION

John Deere 1585 Multi-Use Vehicle

\$46,471 quote from United Ag & Turf

Recommendation from Facilities Director:

- purchase a single vehicle with required attachments
- Includes vehicle with enclosed cab, snow blower, snow plow, pavement broom

It is proposed to store this vehicle in a two-bay storage building/garage on-site: one bay for the vehicles and one for the attachments.



CUSTODIAL LARGE EQUIPMENT RECOMMENDATION

Husqvarna MZ48 Zero-Turn Mower

\$4,303 Quote from Toni's State Line Power Products



Recommendation from Facilities Director:

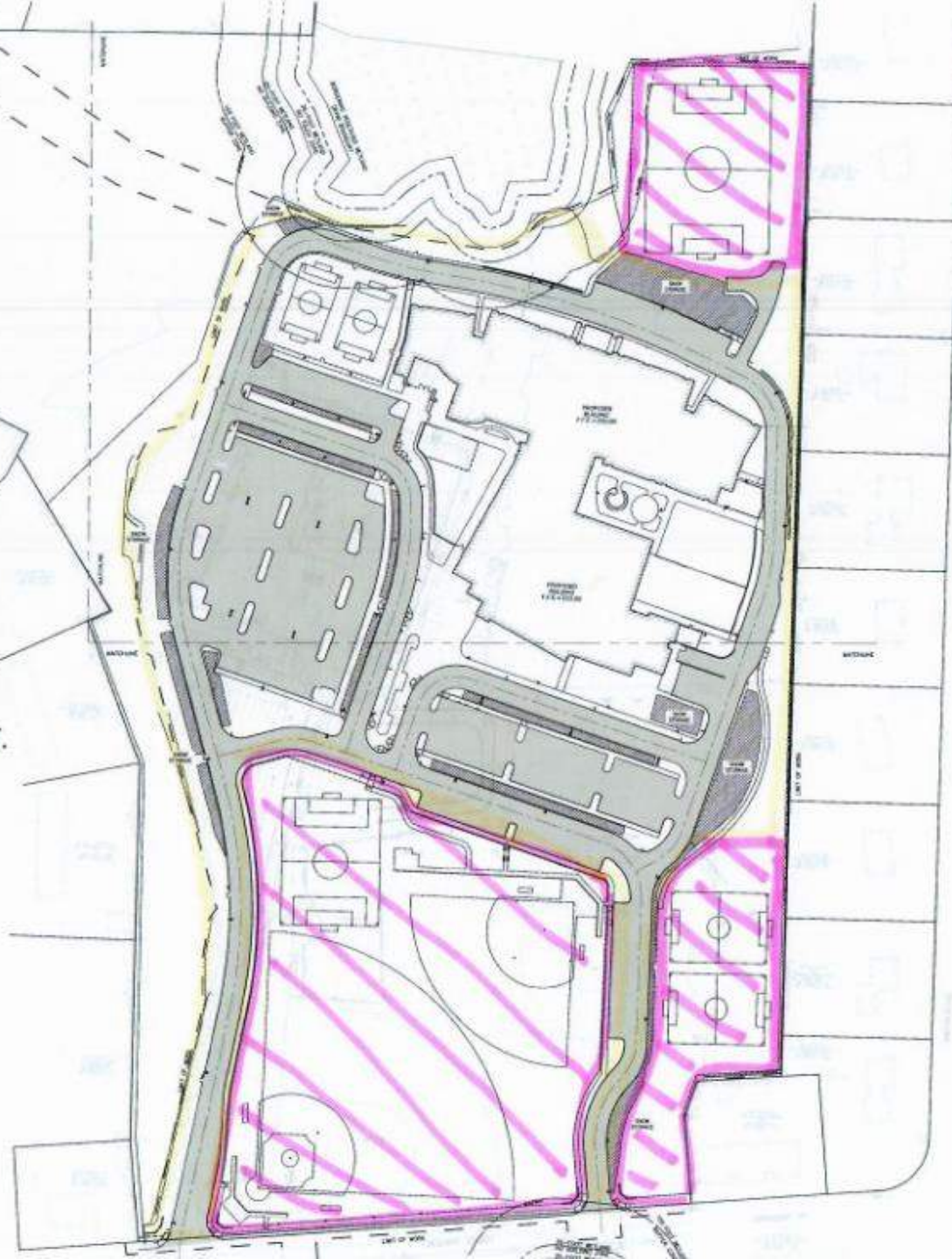
- Specialized mower for size of jobs on NES site
- 48" mower deck
- Quote includes three-chamber bagging attachment

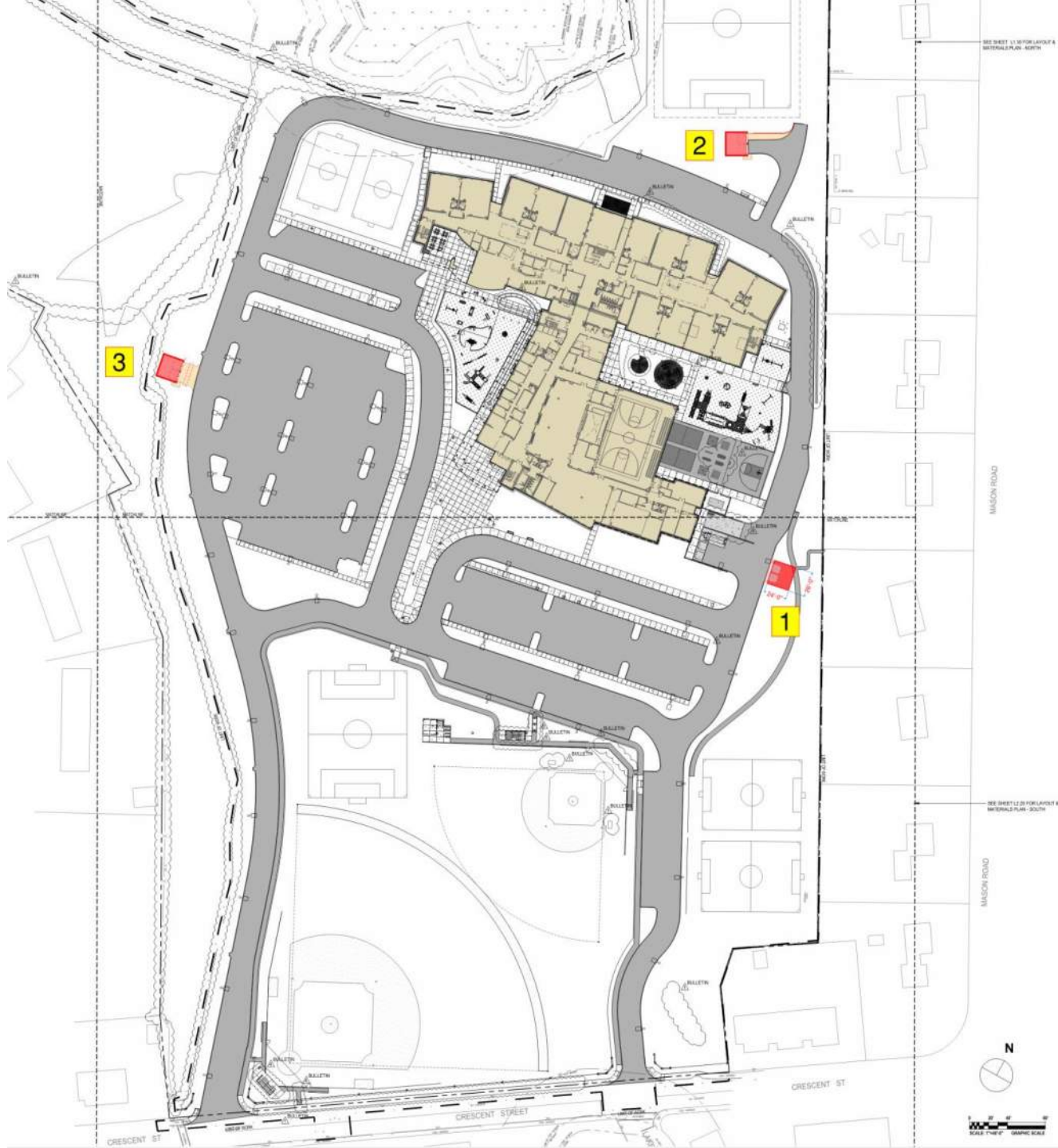
This mower would be stored in the proposed two-bay storage building/garage, in the bay with the JD 1585 attachments.



MOWING PLAN

 - TOWN DPW
 - SCHOOL DEPT.

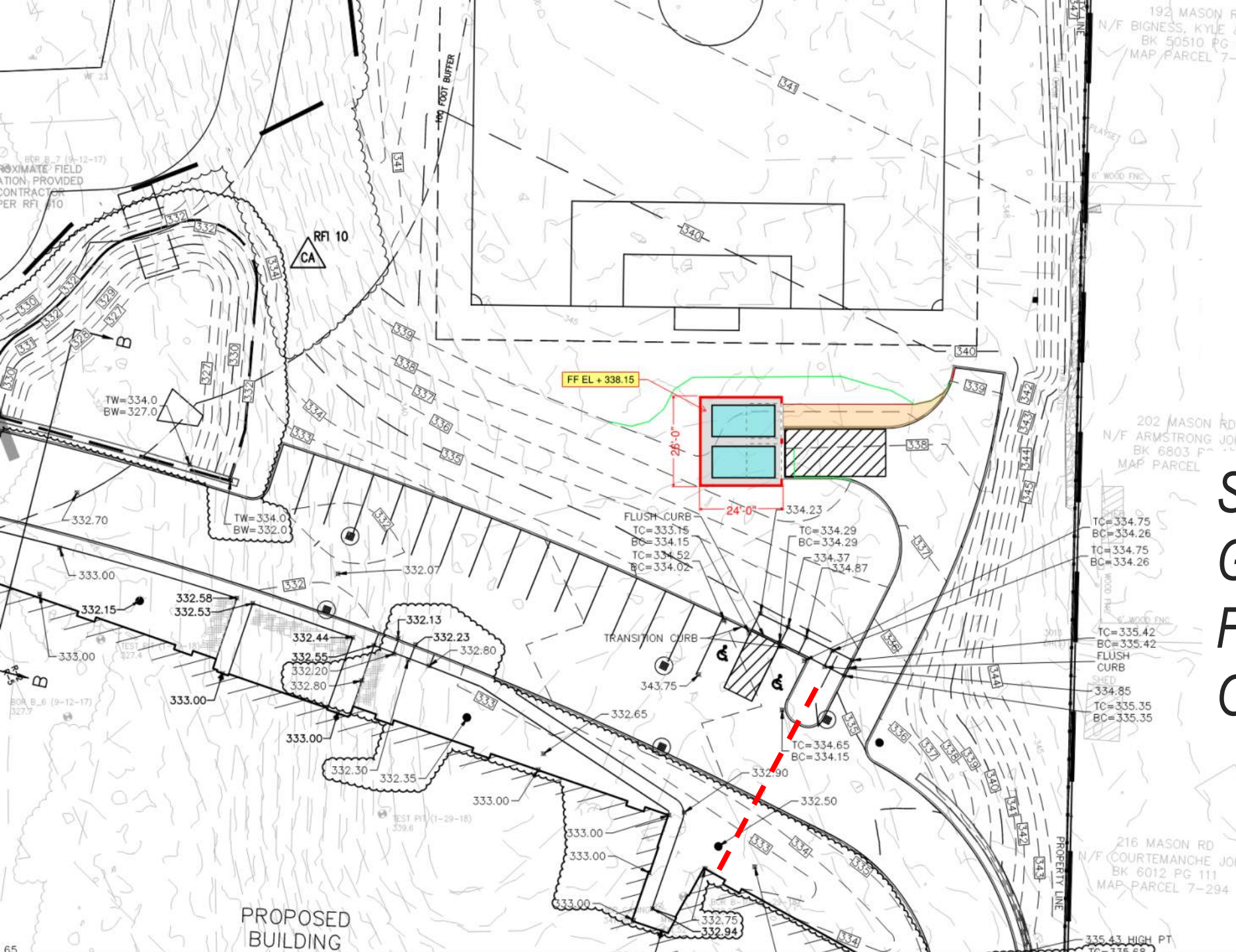




EQUIPMENT STORAGE BUILDING

*SITE PLAN OPTIONS
FOR DISCUSSION
ONLY*





EQUIPMENT STORAGE BUILDING

SCHEMATIC SITE/
GRADING PLAN -
FOR DISCUSSION
ONLY



*SCHEMATIC
PLANTING PLAN –
FOR DISCUSSION
ONLY*



CUSTODIAL EQUIPMENT STORAGE BUILDING UPDATE

Size: 24' W x 26' L x 12' H to the eave.

PRELIMINARY R.O.M. PRICING:

• General Project Requirements:	\$27,150
• Site Work/ Landscaping:	\$29,000
• Concrete Foundations, Slab, Sealing:	\$30,013
• Metal Building steel structure and cladding (Pkg Steel, Sutton, MA) and building installation:	\$38,745
• Door and (2) Overhead Doors w/ misc. steel support	\$17,100
• Electrical – Site and Building	\$55,000
• <u>Insurance, Bonds, Contingency, OH&P</u>	<u>\$31,092</u>
TOTAL	\$228,100



CUSTODIAL EQUIPMENT STORAGE BUILDING UPDATE

PROFESSIONAL SERVICES FEES

(ADDITIONAL SERVICES):

• Civil Engineering/ Limited Permitting:	\$6,200
• Structural Engineering (Foundations):	\$7,500
• Architectural Services	\$17,000
• Electrical Engineering – Site and Building	\$2,160
• Plumbing Engineering	\$4,000

TOTAL	\$36,860
--------------	-----------------



CUSTODIAL EQUIPMENT STORAGE BUILDING UPDATE

TOTAL COST:

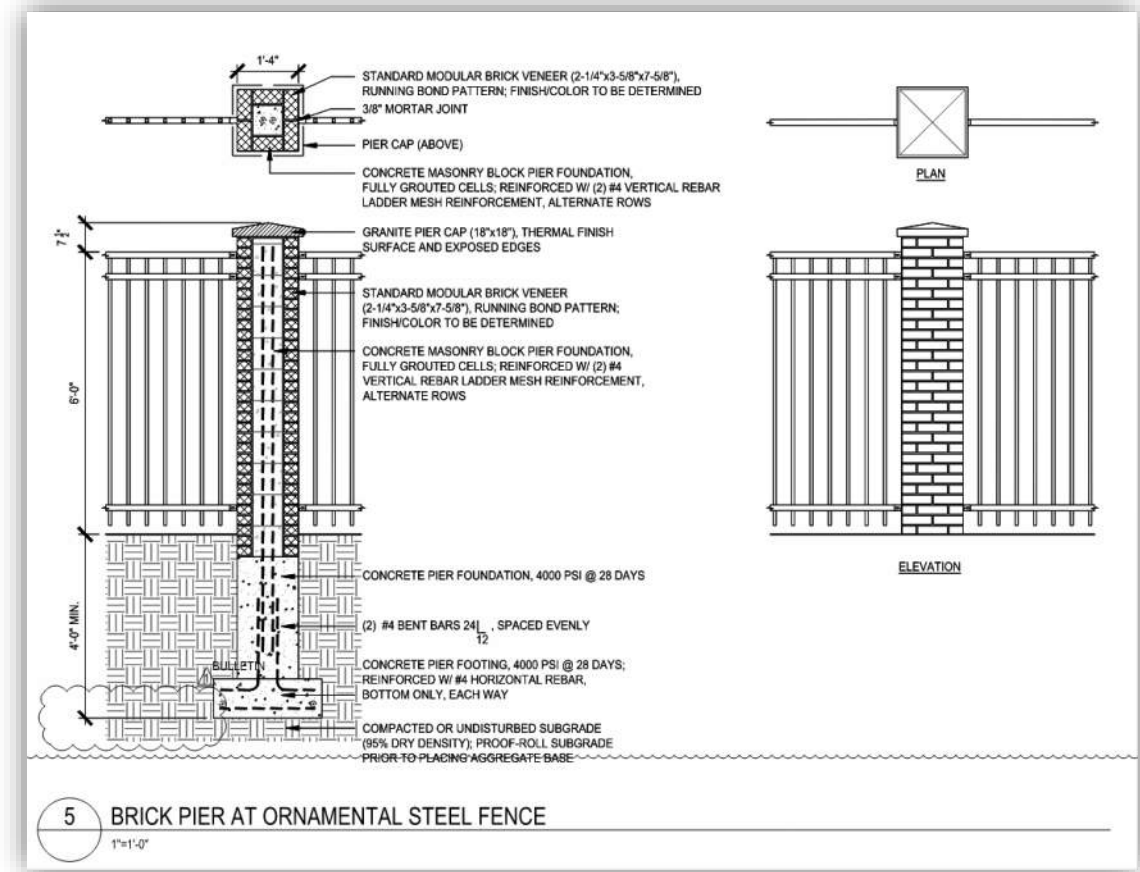
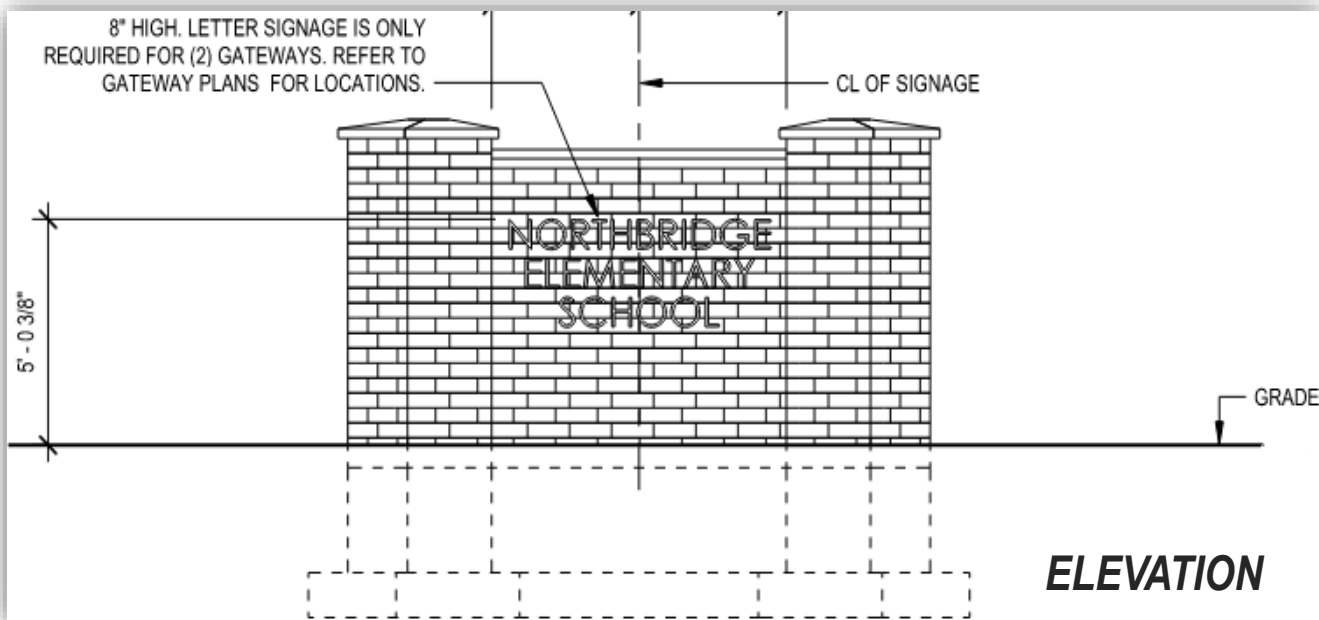
TOTAL A/E FEES	\$36,860
CONSTRUCTION COSTS (ROM PRICING)	\$228,100
TOTAL ADDED COST:	\$264,960



SITE MASONRY GATEWAY UPDATE

ORIGINAL SCHEME

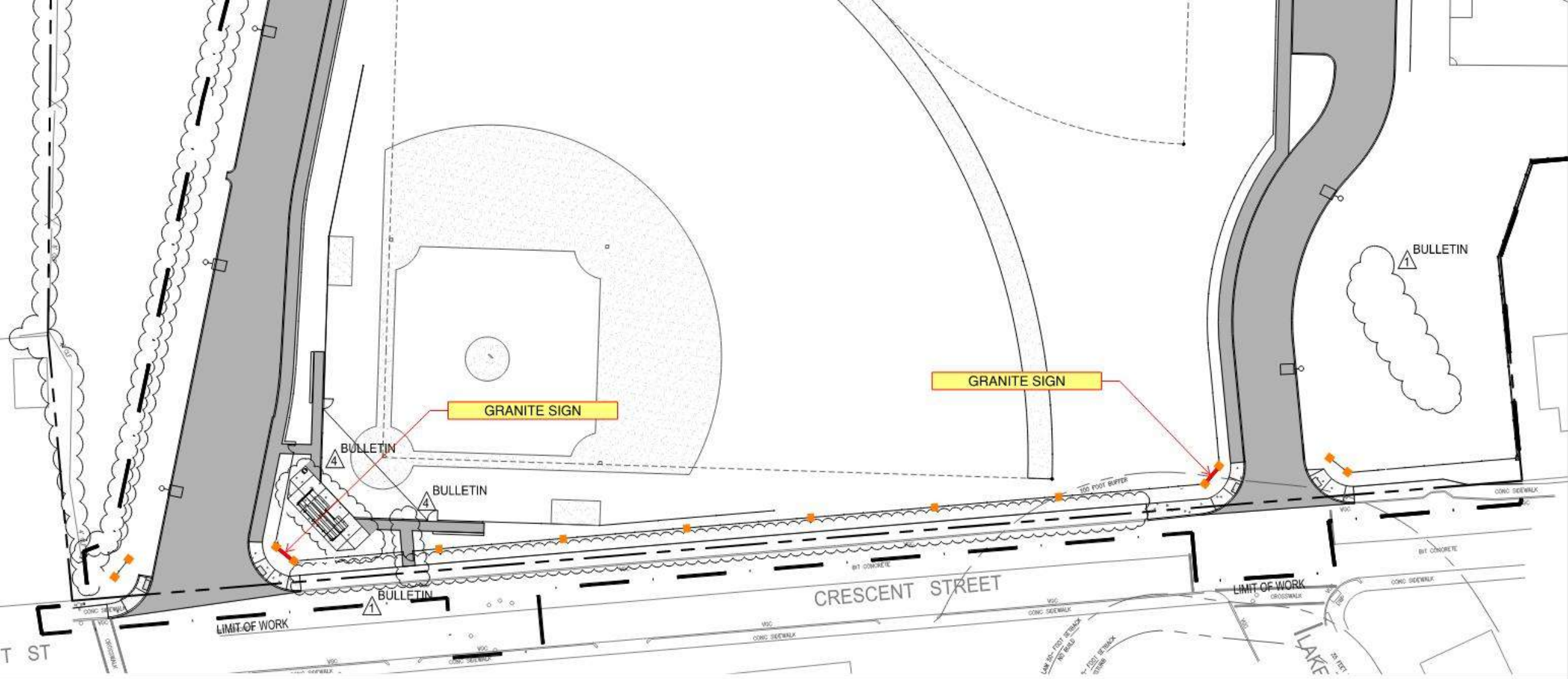




SITE MASONRY GATEWAY UPDATE

REVISED SCHEME:
COST: \$151,880





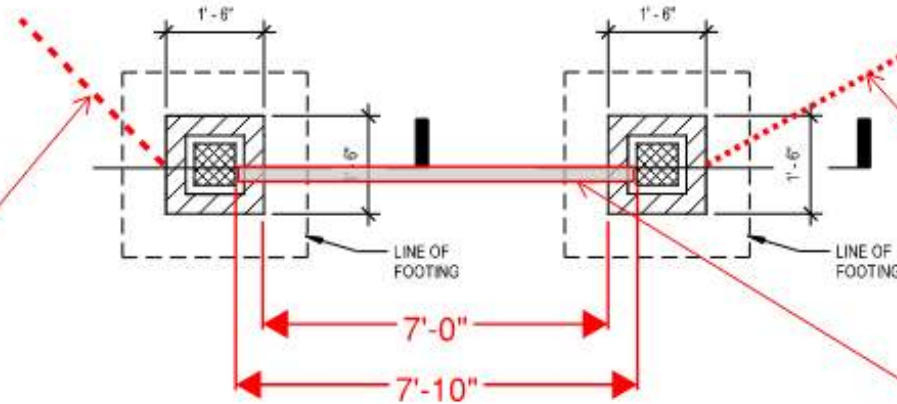
SITE MASONRY GATEWAY UPDATE

REVISED SCHEME:
R.O.M. COST: \$43,500



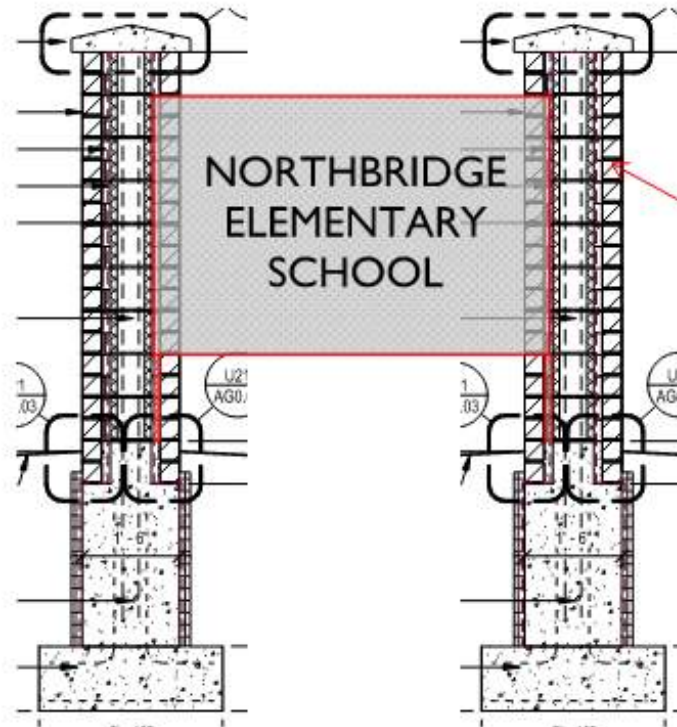
SITE MASONRY GATEWAY UPDATE

METAL ORNAMENTAL
FENCE JOINS PIER AT
SITE-SPECIFIC ANGLE -
SEE LARGE SITE PLAN



CHAIN LINK FENCE
JOINS AT SITE-SPECIFIC
ANGLE - SEE LARGE
SITE PLAN

7'-10" W X 4'-0" H X 4" D
GRANITE SIGN
SUPPORTED ON SOLID
MASONRY PIERS



PROVIDE (2) PIER/SIGNS AS DRAWN, LOCATE
ONE AT EACH SITE ENTRY ACCESS DRIVE
(ONE EAST, ONE WEST).
AT OPPOSITE (2) FACING PIER LOCATIONS,
PROVIDE THIS DETAIL WITH ORNAMENTAL
METAL FENCING IN LIEU OF GRANITE SIGN.

REVISED SCHEME:
R.O.M. COST: \$43,500



VAIL FIELD ~~SNACK~~ STORAGE SHED UPDATE

- WILL NOT be using the shed for food sales – no BOH review required
- Shed will be exclusively for storage of a riding mower, landscaping and field supplies, and baseball equipment.
- Separate building permit still required
- Quote from Vendor: Skip's Sheds, Sutton, MA
- Size 12' x 18' = 216 SF – better size for road transport
 - “Amish Shed” manufactured in Lancaster Co, PA, trucked to the site.
 - DuraTemp® Siding (16 standard colors) – sim to vinyl-coated T-111
 - Painted trim on corners, rakes, fascia, window and doors
 - Pressure treated floor system with 2x4 joist - 8" on center
 - 9' x 6'-6" steel overhead door
 - Standard wood-framed construction 2 x 4s at 16" OC
 - 30-year architectural shingles (choice of 11 standard colors)



LIKENESS ONLY – FINAL DESIGN TO BE DETERMINED

Preliminary pricing: \$7,876

Required deposit \$3,000

Lead time is currently 5+ months.



A photograph showing a blue chain-link fence running along a wooded area. In the foreground, there is a large, cut tree stump and a fallen log. The ground is covered with dry, brown leaves and patches of snow. The background consists of tall, thin trees and a dense forest.





NORTHBRIDGE ELEMENTARY SCHOOL

Dedicated to the students and community of Northbridge

SEPTEMBER 2021

Adam Gaudette, Town Manager

Amy McKinstry, Superintendent

Nicholas Hoffman and Karlene Ross, Co-Principals

SCHOOL BUILDING COMMITTEE:

Joseph Strazzulla, Chair

Paul Bedigian

Michael LeBrasseur

Spencer Pollock

Alicia Cannon

Peter L'Hommedieu

Gregory Rosenthal

Andrew Chagnon

Jeffrey Lundquist

George Simmons

Steven Gogolinski

Brian Paulhus

Jeffrey Tubbs

Jill Healy

Melissa Walker

Owner's Project Manager: Symmes Maini McKee Associates

Architect: Dore + Whittier Architects

Construction Manager: Fontaine Brothers, Inc.

This project was funded in part by the Massachusetts School Building Authority.

**DEDICATION
PLAQUE
UPDATE**





NORTHBRIDGE ELEMENTARY SCHOOL

Dedicated to the students and community of Northbridge

SEPTEMBER 2021

Adam Gaudette, Town Manager

Amy McKinstry, Superintendent

Nicholas Hoffman and Karlene Ross, Co-Principals

SCHOOL BUILDING COMMITTEE:

Joseph Strazzulla, Chair

Paul Bedigian

Michael LeBrasseur

Spencer Pollock

Alicia Cannon

Peter L'Hommedieu

Gregory Rosenthal

Andrew Chagnon

Jeffrey Lundquist

George Simmons

Steven Gogolinski

Brian Paulhus

Jeffrey Tubbs

Jill Healy

Melissa Walker

Owner's Project Manager: Symmes Maini McKee Associates

Architect: Dore + Whittier Architects

Construction Manager: Fontaine Brothers, Inc.

This project was funded in part by the Massachusetts School Building Authority.

**DEDICATION
PLAQUE
UPDATE**



CONSTRUCTION UPDATE

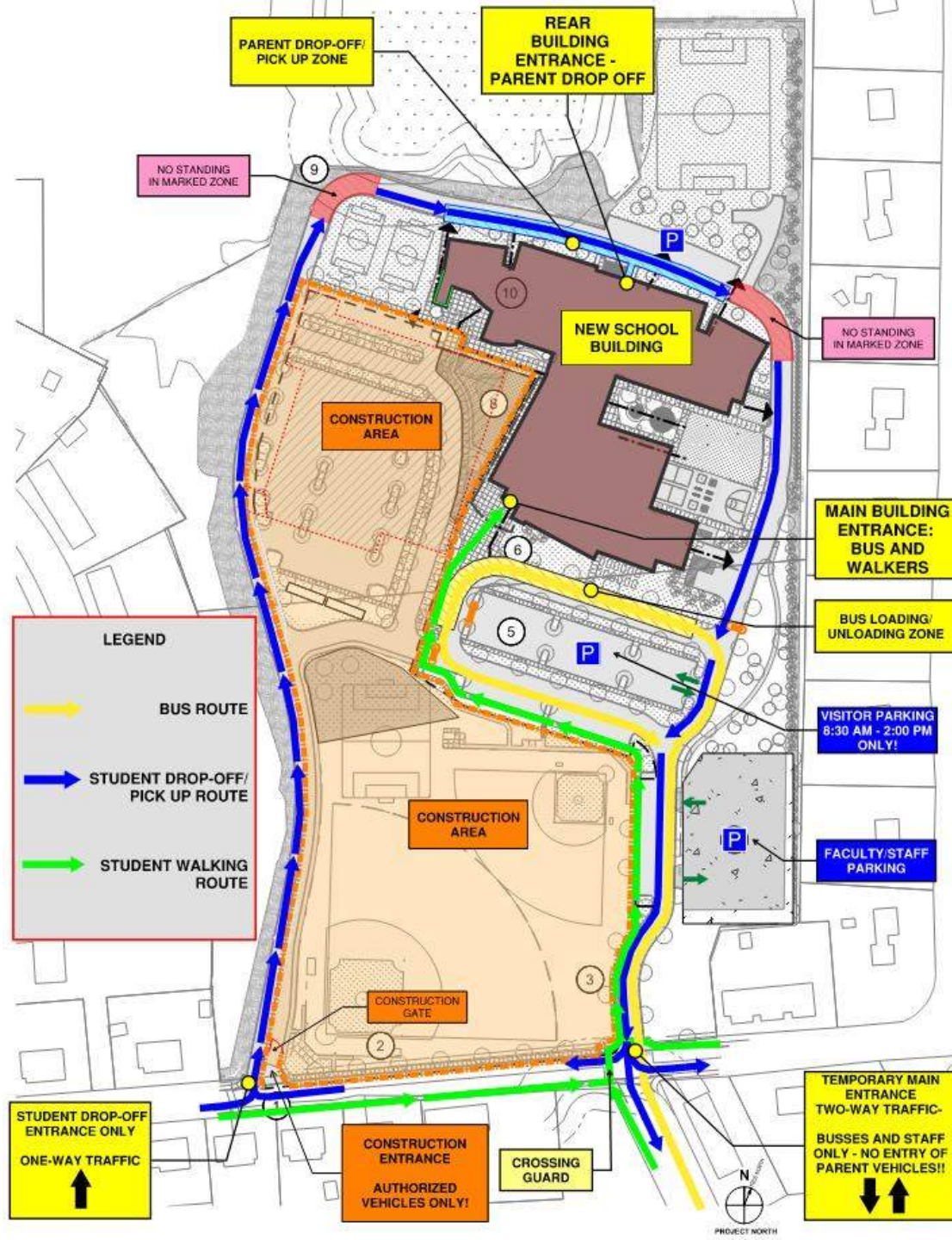


FONTAINE BROS., INC.

CONSTRUCTION MANAGERS
GENERAL CONTRACTORS



SUMMER '21 PHASING PLAN



CONSTRUCTION UPDATE

Site work –
Phase 2 begins
Ledge in
roadway is
slowing
progress



CONSTRUCTION UPDATE



Phase 2 - Earth work in full swing south of the school

CONSTRUCTION UPDATE



Phase 2 Abatement (windows) completed and prepping for mass-demo of old school building

CONSTRUCTION UPDATE



Phase 1 Site work nearing completion

CONSTRUCTION UPDATE

Timber canopy and roof completed

CONSTRUCTION UPDATE

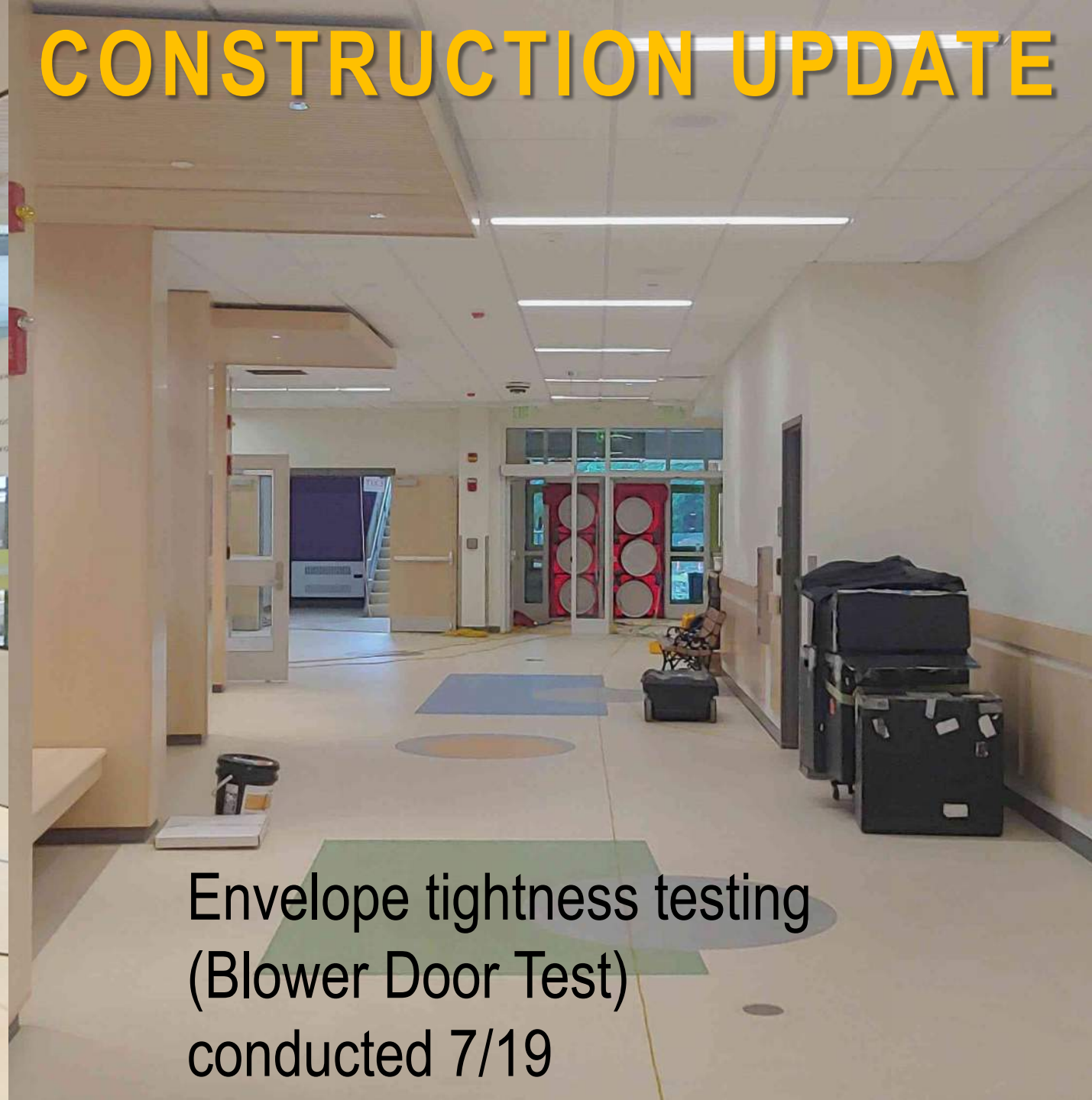


Outdoor
Classroom
circular bench
construction in the
East Courtyard





CONSTRUCTION UPDATE



Envelope tightness testing
(Blower Door Test)
conducted 7/19

CONSTRUCTION UPDATE

Gymnasium complete – loose equipment moving in

CONSTRUCTION UPDATE



Café North finishes nearly complete

CONSTRUCTION UPDATE



Last linoleum flooring in Café South nearing completion

FF&E UPDATE

Media Center casework in place
and Librarian moving in



FF&E UPDATE



FF&E UPDATE



FF&E UPDATE



QUESTION AND ANSWER

