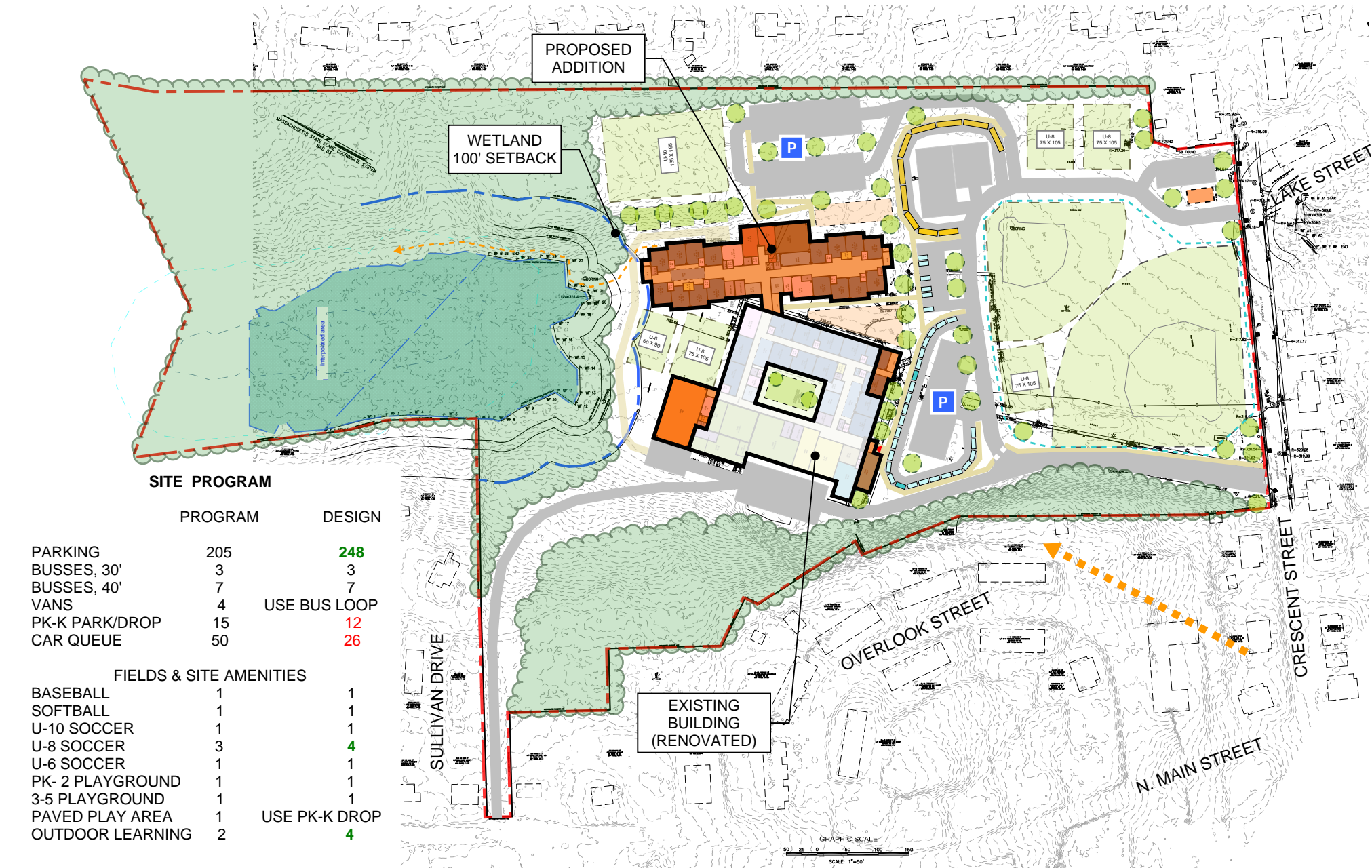


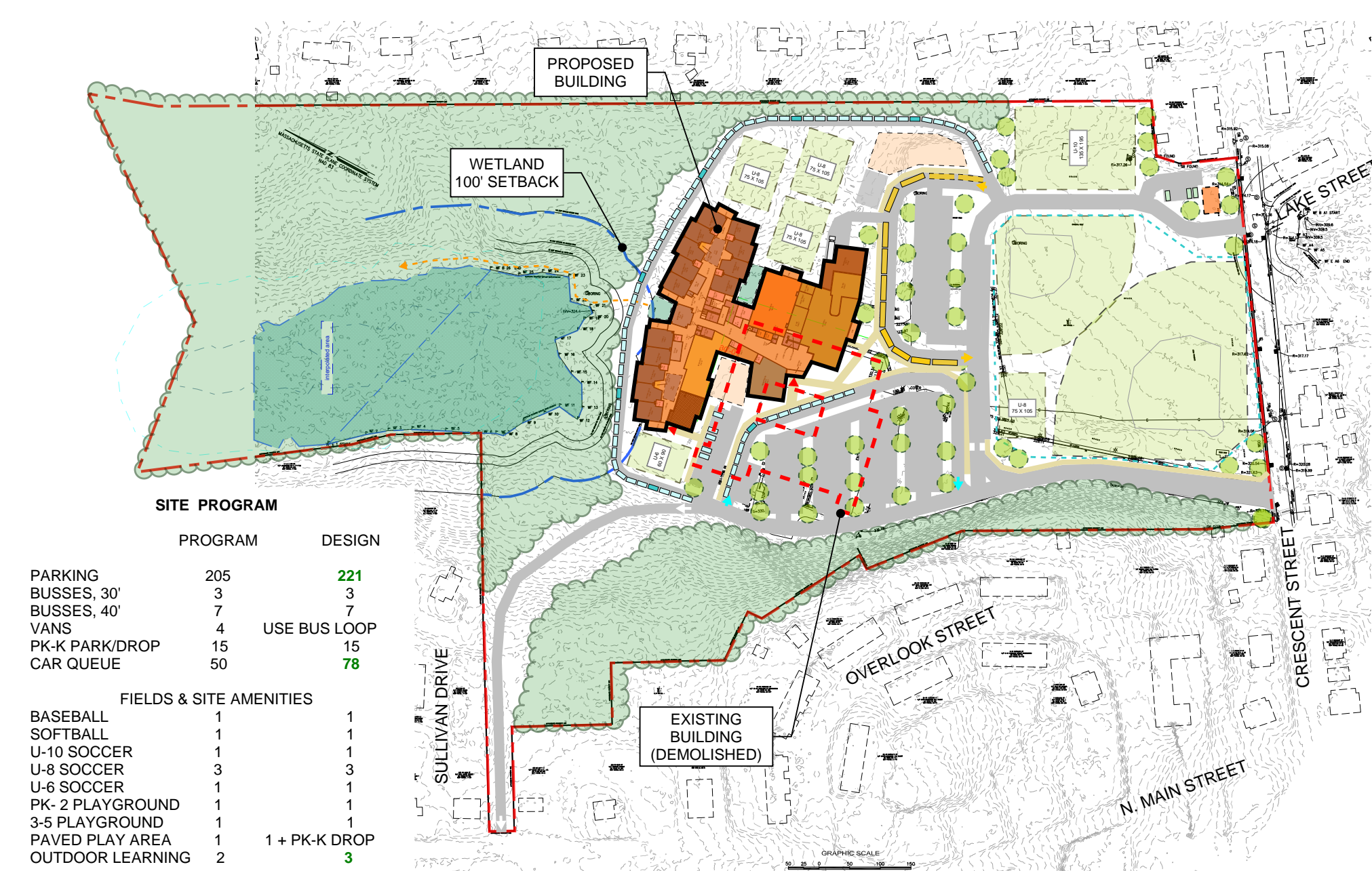
OPTION B2 NEW CONSTRUCTION 2 YRS

B2 NEW/ REAR \$66.9M



OPTION C2 RENO/ADD 4 YRS

C2 RENO/ADD KEEP EXIST. \$60.0M



OPTION C3.1a NEW/PHASED 3.5 YRS

C3.1a NEW/ REAR \$59.9M

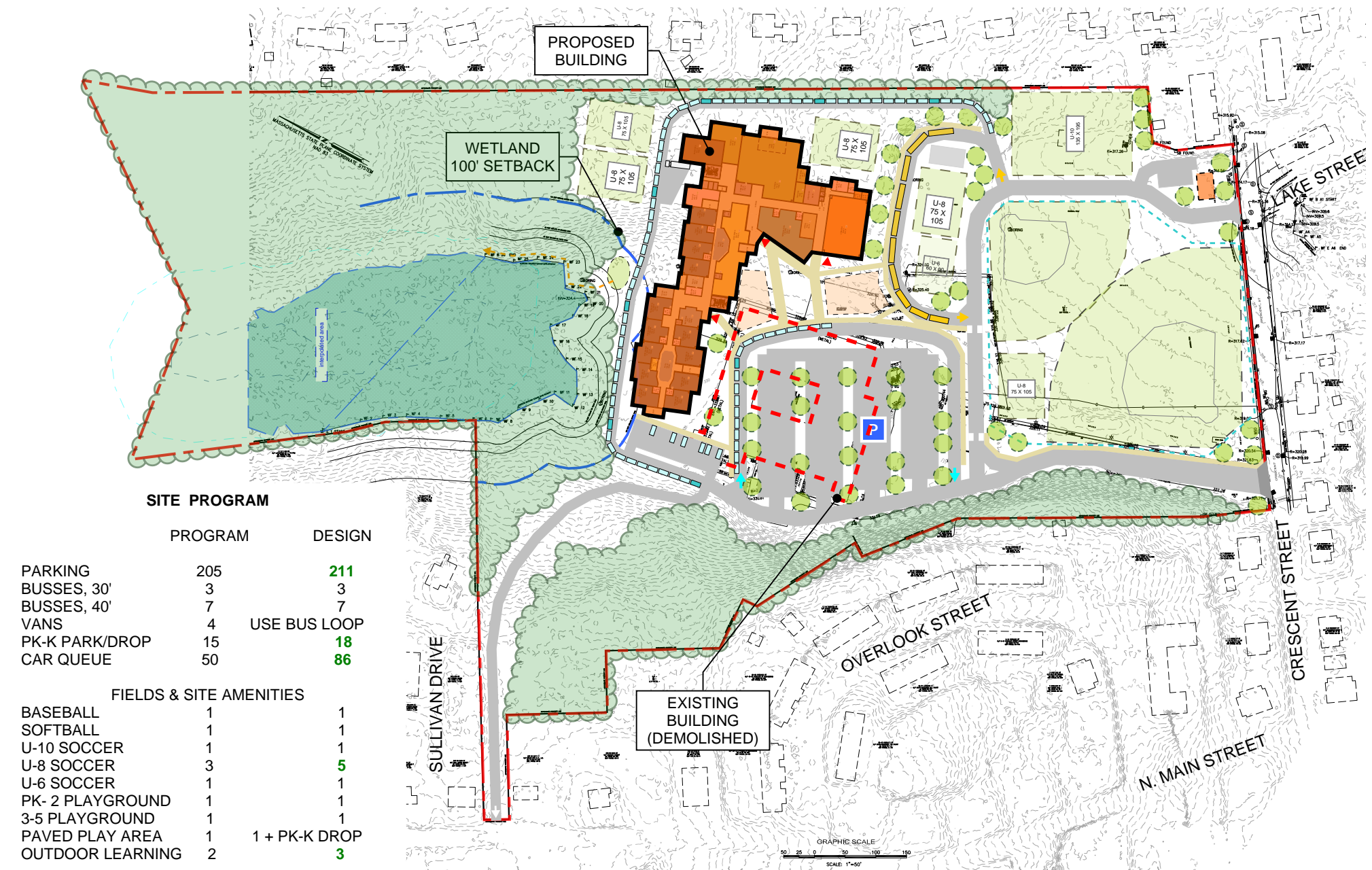


OPTION C3.1b NEW CONSTR. 3 YRS

C3.1b NEW/ REAR \$58.0M

- 1. Education**
 - a. Provides greatest benefit to most number of students
 - b. Satisfies the Space Program
 - c. Satisfies the Spatial Adjacencies
 - d. Impact to Students During Construction
 - e. Classroom Solar Orientation
- 2. Scale to Neighborhood Context, Swing Space, and Permitting**
 - a. Building Scale to Site
 - b. Swing Space Not Required
 - c. Permitting (time, difficulty)
- 3. Site Circulation**
 - a. Separation of Cars, Buses, Vans, and Pedestrians
 - b. Parking
 - c. Provides Sufficient Space for Parent Queue
- 4. Site Features**
 - a. Provides Outdoor Play Fields / Area
 - b. Provides an Opportunity / Location for a Hardscape Play Area
 - c. Provides an opportunity for outdoor learning places
 - d. Provides Area for Age-appropriate Play Structure(s)
 - e. Location of Site Features
- 5. Safety & Security Features**
- 6. Time to Completion**
 - a. Construction Duration
 - b. Impact on existing school operation during construction
 - c. Risk of schedule delays due to complexity of construction phasing
- 7. Cost**

EVALUATION CRITERIA



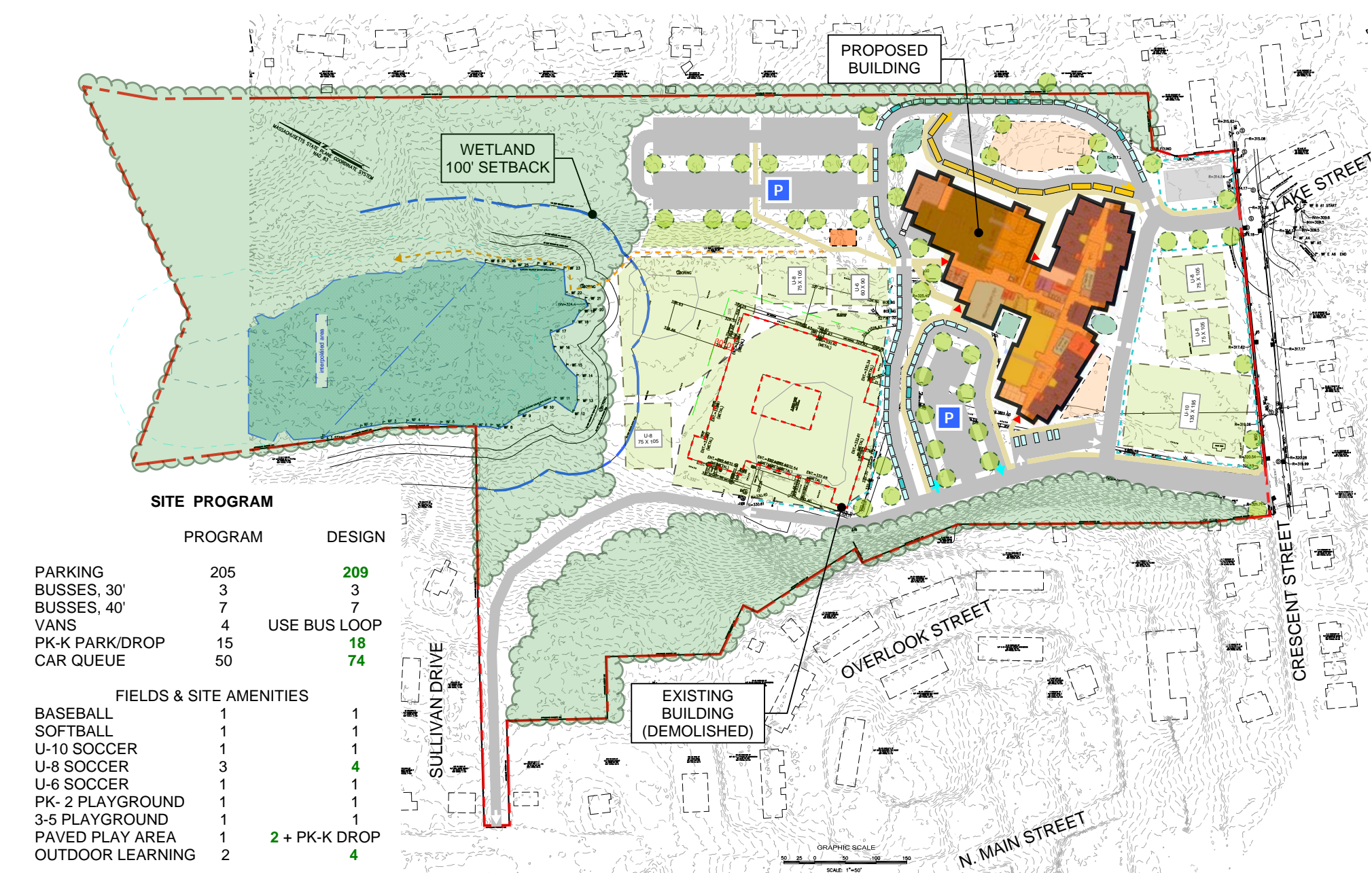
OPTION C3.2 NEW CONSTR. 3 YRS

C3.2 NEW/ SIDE \$58.5M



OPTION C3.3 NEW CONSTR. 3 YRS

C3.3 NEW/ SIDE \$62.5M



OPTION C5 NEW CONSTR. 3 YRS

C5 NEW/ FRONT \$55.7M