

W. EDWARD BALMER SCHOOL

Schematic Design Phase

Join us for Public Forum #6 at the

WHITINSVILLE SOCIAL LIBRARY

17 Church Street, Whitinsville

March 12, 2018 – 6:00 PM

Hosted by the

Northbridge School Building Committee

QUICK RECAP

Catch up on what you might have missed:

- Existing Condition of the Facilities
- Space Needs
- Educational Needs & Vision
- Decision Process for Preferred Option

REVIEW OUR PROGRESS

The Preferred Design Alternative:

- Site Planning Update
- Building Design Update

SHARE YOUR THOUGHTS

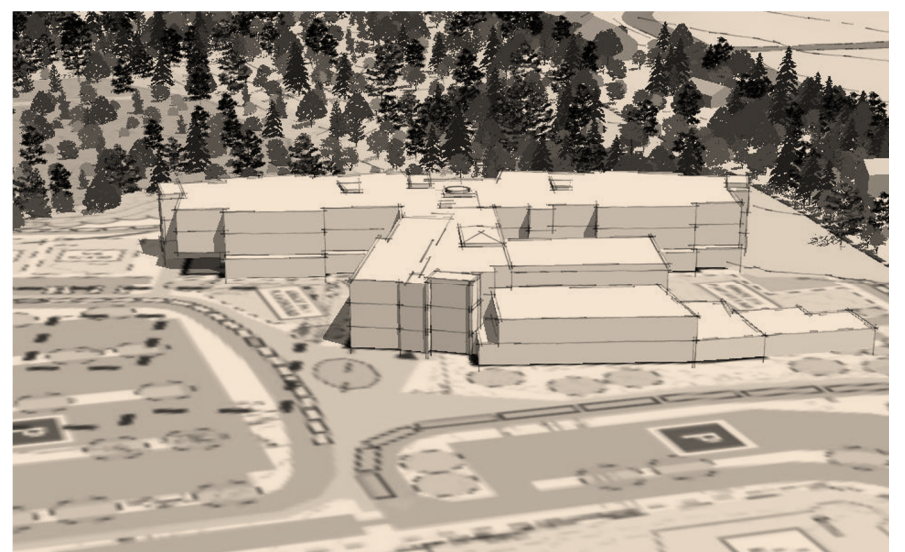
Have an impact! Provide input...

- Here at this meeting
- Written comments afterward

PROCESS AND SCHEDULE

Find out where we are in the process:

- Learn about upcoming steps
- Schematic Design Phase milestones



CHILD CARE WILL BE PROVIDED

Project Website: www.nps.org/sbc Project Email: sbc@nps.org

SPONSORED BY THE NORTHBRIDGE SCHOOL BUILDING COMMITTEE

SMMA – Owner's Project Manager

Dore & Whittier Architects

IN PARTNERSHIP WITH THE MASSACHUSETTS SCHOOL BUILDING AUTHORITY