

W. EDWARD BALMER ELEMENTARY SCHOOL

Northbridge, MA

Building Committee Meeting

JUNE 26, 2017





leadership

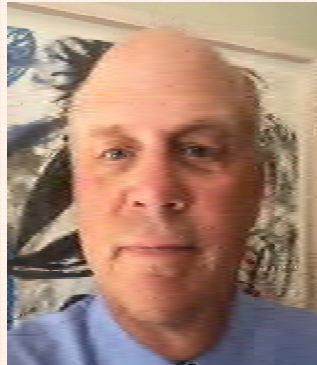
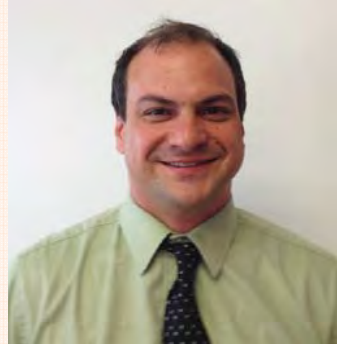
elementary education

engagement

long term relationships

msba experience

work throughout commonwealth



team

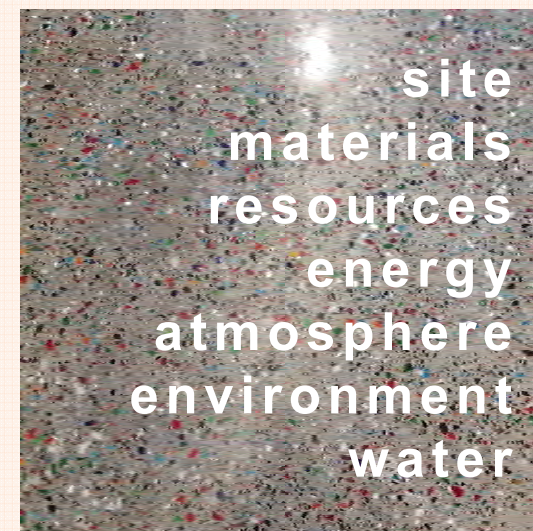
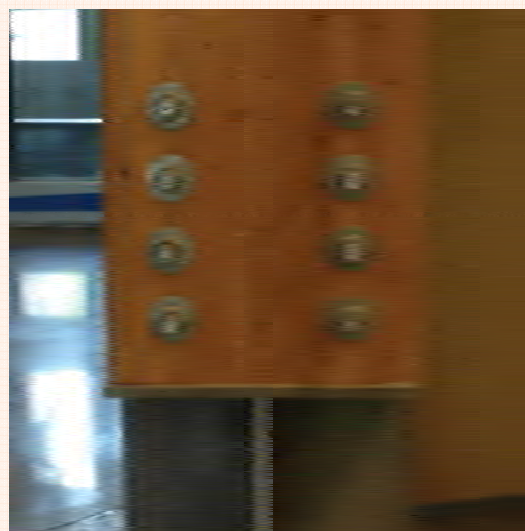
- experience
- energy efficient design
- quality control
- cost-effective

recent elementary projects

25 communities in the last 5 years

6 elementary schools with msba





innovation



A close-up photograph of a child's hands, wearing a light blue button-down shirt, carefully assembling a structure with grey, red, and black LEGO bricks. The child is seated at a warm-toned wooden table, which is scattered with various other LEGO pieces. The background is softly blurred, showing more of the table and the child's arm. Overlaid on the right side of the image is the text 'EDUCATION', 'PROCESS', 'OPTIONS', and 'COMMUNICATION' in a bold, grey, sans-serif font, stacked vertically. In the bottom left corner, the letters 'D' and 'W' are elegantly intertwined in a white, serif font.

EDUCATION
PROCESS
OPTIONS
COMMUNICATION

D
& W

A close-up photograph of a child's hands assembling LEGO bricks. The child is wearing a light blue button-down shirt. The background is a wooden table with various other LEGO bricks and a white plastic bag, all out of focus. The lighting is warm and natural.

EDUCATION

visioning
educational planning

D
& W

Educational Planner & Stakeholder Engagement



Graphic Facilitation by **dpict** | dpict.info | thevalueweb.org



A close-up photograph of a child's hand, wearing a red long-sleeved shirt, drawing hopscotch on a sandy surface using colorful chalk. The chalk lines are in shades of pink, blue, and purple. The background is slightly blurred, showing more of the sandy area and the child's arm.

PROCESS

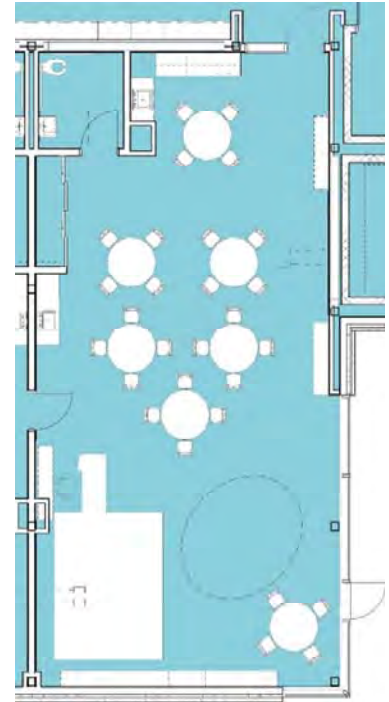
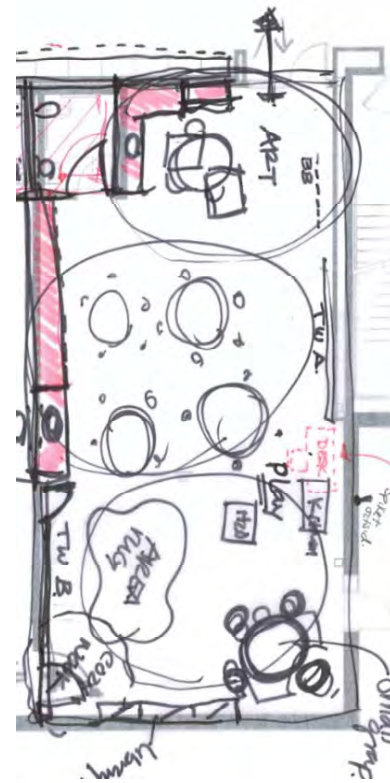
listen

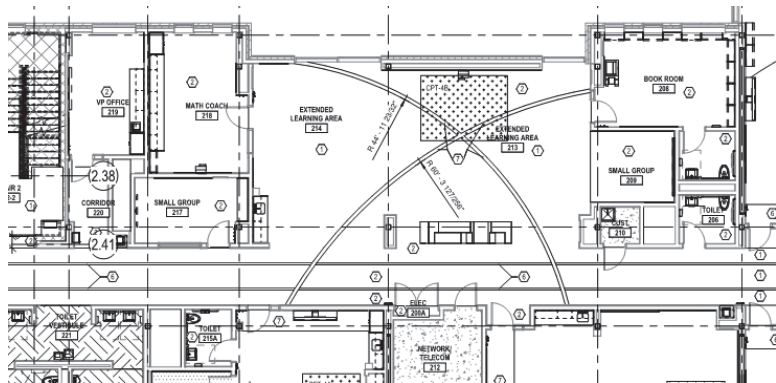
translate


implement

D
&w

listen, translate



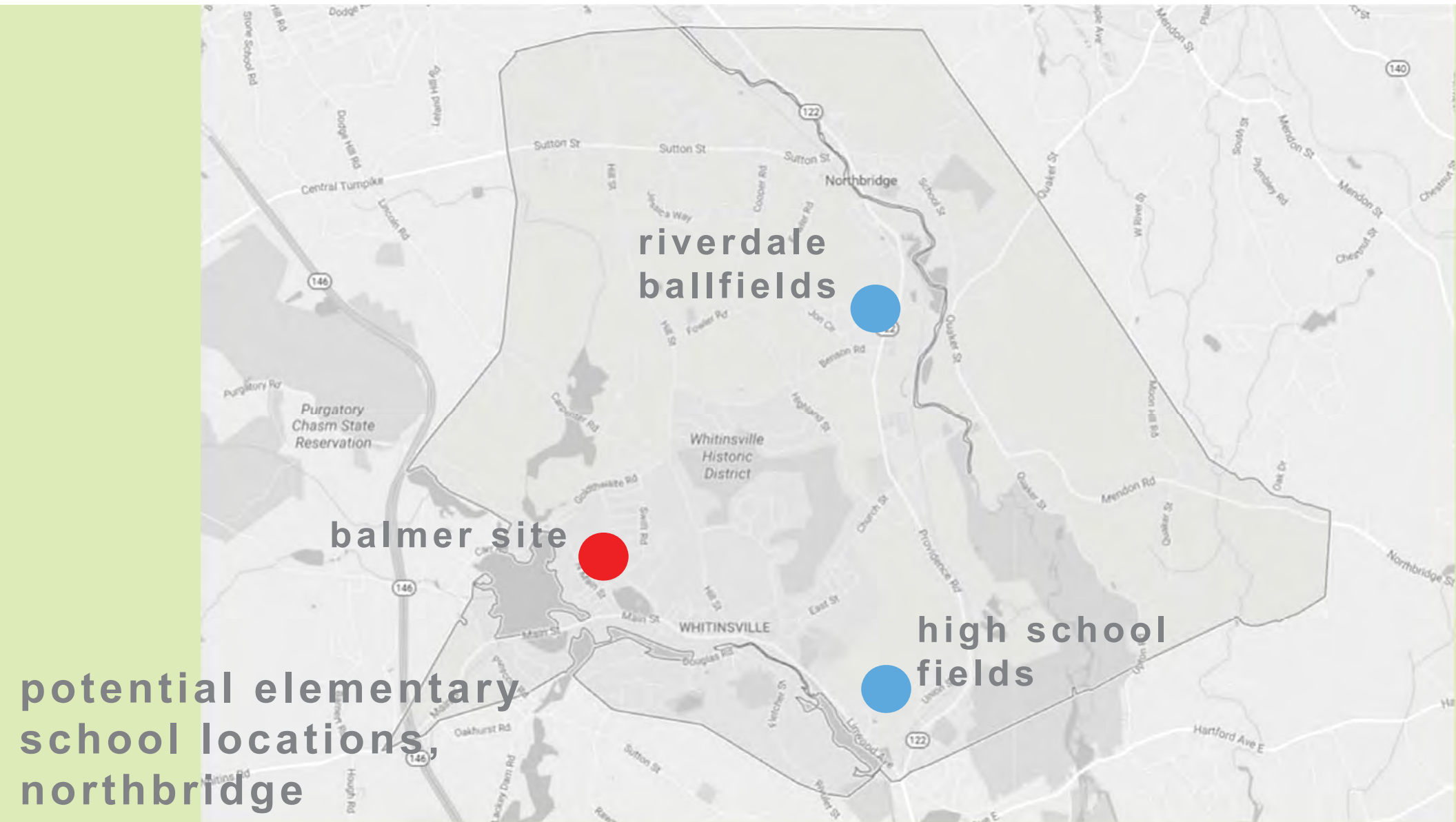
[illegible]

A close-up photograph of a child's hands carefully placing a wooden block onto a tall, precarious stack of Jenga blocks. The child is wearing a red shirt. The background is blurred, showing what appears to be an indoor setting with blue light. The text 'site analysis', 'addition/renovation', and 'new construction' is overlaid on the left side of the image.

site analysis
addition/renovation
new construction

OPTIONS

**D
& W**



opportunities and constraints

wetland
steep slopes
.02% flood zone



opportunities and constraints

buildable area



opportunities and constraints

solar access
shading



opportunities and constraints

site access
roads and traffic



opportunities and constraints

site circulation





ADDITION/ RENOVATION METHODS

- modulars
- swing space off site
- summer /off hours construction
- phased occupied construction



ADDITION/ RENOVATION OPTION

phase 1
enabling site work



ADDITION/ RENOVATION OPTION

phase 1



ADDITION/ RENOVATION OPTION

phase 2



ADDITION/ RENOVATION OPTION

phase 3



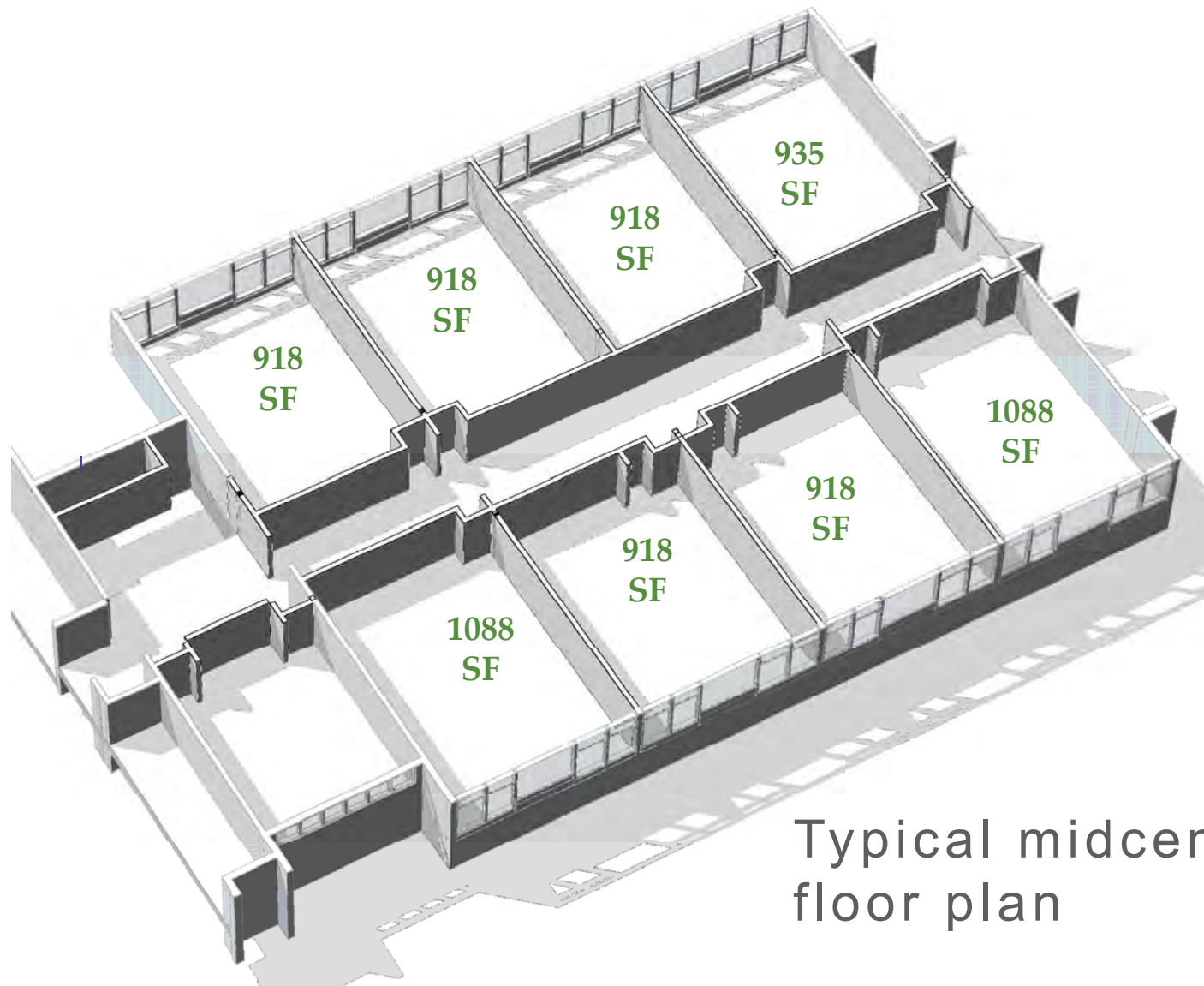
ADDITION/ RENOVATION OPTION

balmer school site

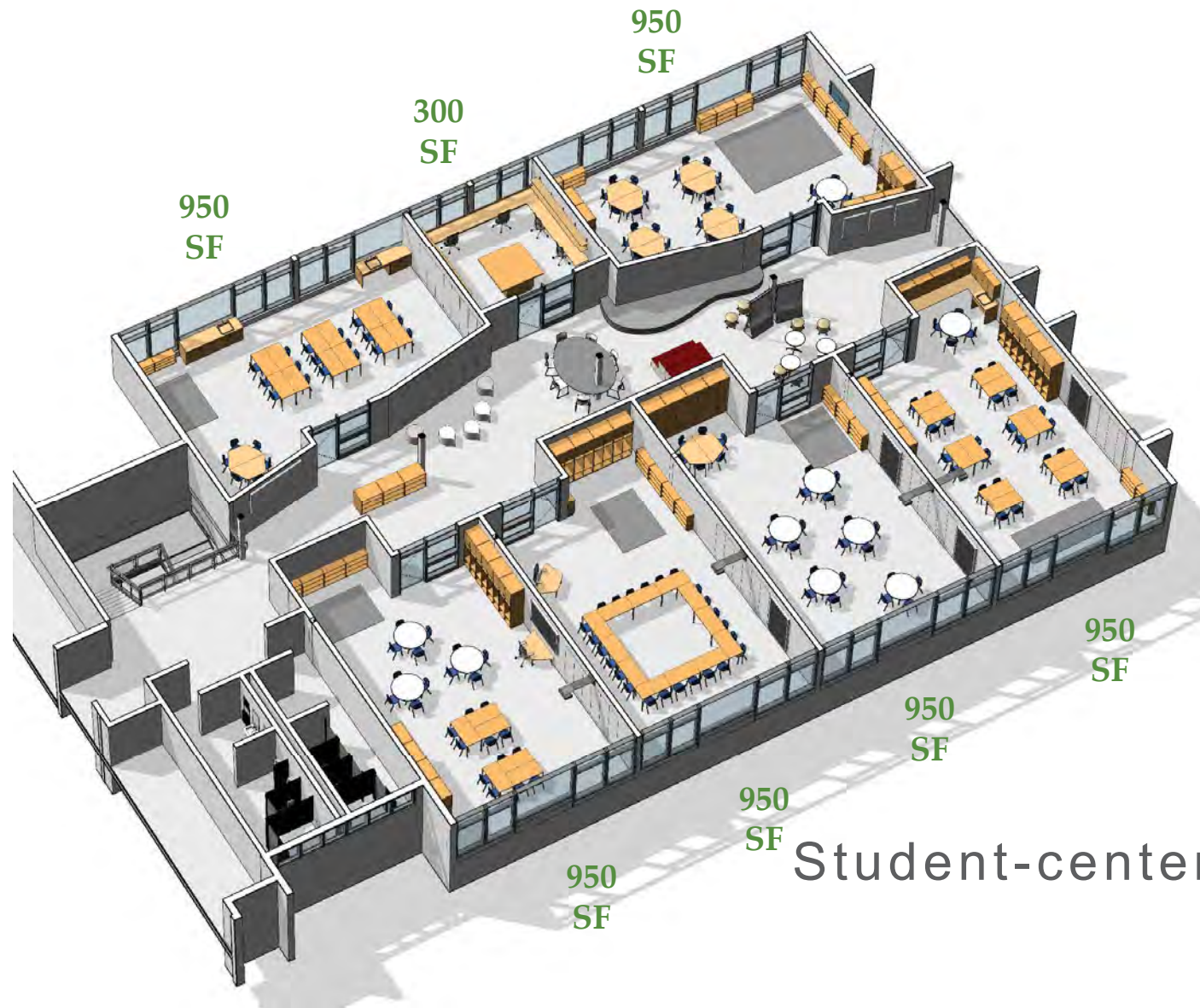


SEAMLESS INTEGRATION

ACCESSIBILITY
HEALTH, SAFETY &
WELFARE
BUILDING ENVELOPE
STRUCTURAL
MECHANICAL
ELECTRICAL
PLUMBING
FIRE PROTECTION
TECHNOLOGY



Typical midcentury
floor plan



Student-centered design

NEW CONSTRUCTION OPTION

balmer school site



balmer
school site

NEW CONSTRUCTION OPTION

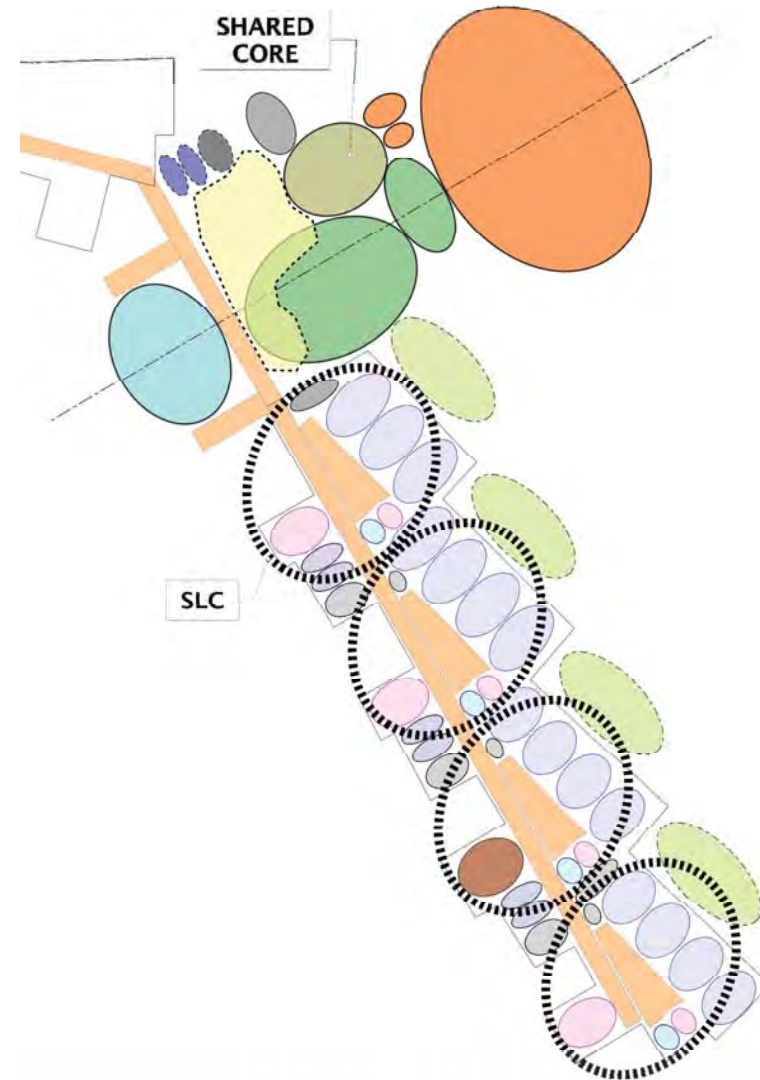


- **SCHOOL**

- Wing

(school within a school)

- small learning communities
 - educational space
 - learning site

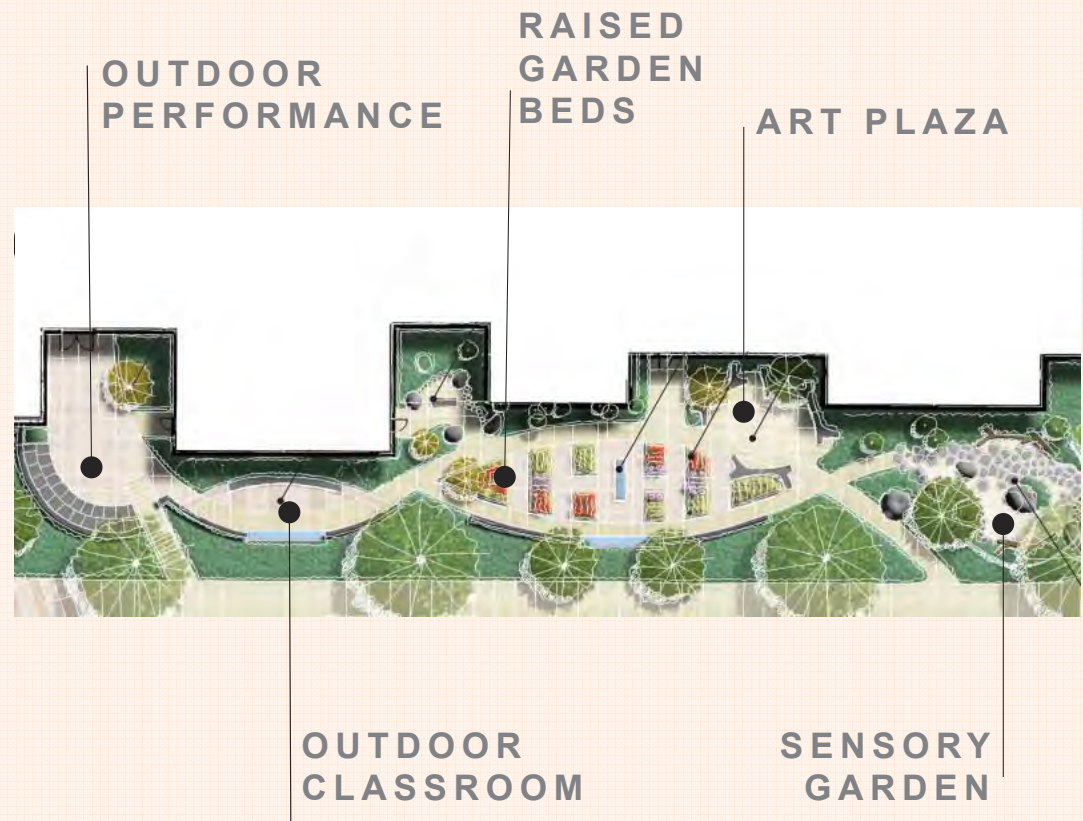




small learning communities:
neighborhood



design
from the inside out





balmer school site

NEW
CONSTRUCTION
OPTION

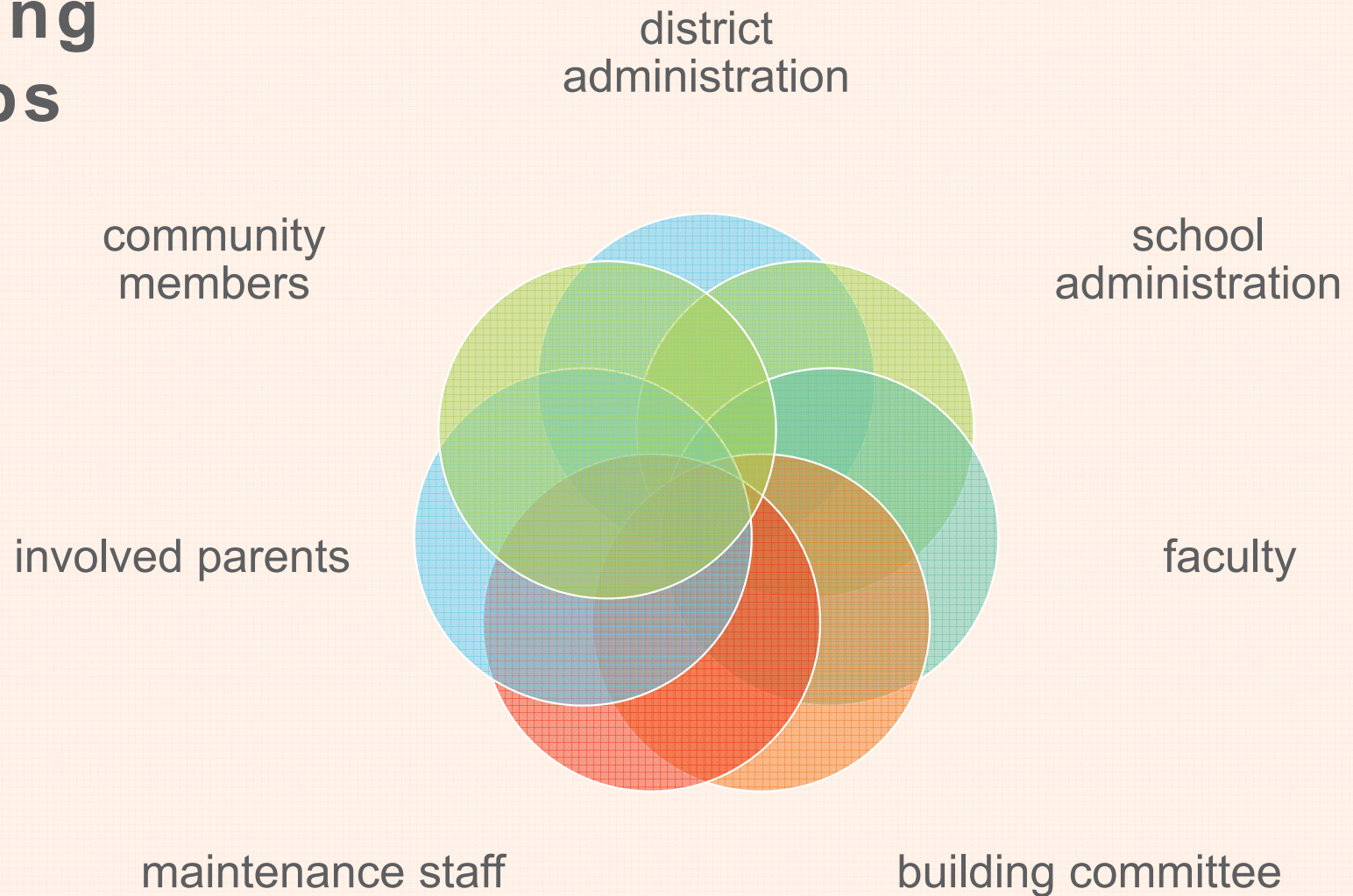
A person with short brown hair is holding a silver and black Minolta camera with a 50mm lens. The camera's lens is in focus, showing a reflection of a colorful scene. The person is wearing a blue t-shirt and a brown strap is attached to the camera. The background is blurred, showing some green and blue lights.

four-way approach:
working groups
social media
user dialogue
public forums

COMMUNICATION

**D
&w**

working groups







user dialogue:
students
teachers
administrators
staff



A young girl with blonde hair is peeking over a grey brick wall. The wall is covered in colorful confetti, including red, yellow, blue, green, and pink pieces. The girl's eyes are visible as she looks up.

THANK YOU

D
& W