

PROJECT MINUTES

Project:	W. Edward Balmer Elementary School Feasibility Study	Project No.:	17020
Prepared by:	Joel Seeley	Meeting Date:	10/17/2017
Re:	School Building Committee Meeting	Meeting No:	13
Location:	High School Media Center	Time:	6:30pm
Distribution:	School Building Committee Members, Attendees (MF)		

Attendees:

PRESENT	NAME	AFFILIATION	VOTING MEMBER
✓	Joseph Strazzulla	Chairman, School Building Committee	Voting Member
✓	Melissa Walker	School Business Manager	Voting Member
✓	James Marzec	Representative of the Board of Selectmen	Voting Member
✓	Michael LeBrasseur	Chairman, School Committee	Voting Member
✓	Paul Bedigian	Representative of the Building, Planning, Construction Committee	Voting Member
✓	Steven Gogolinski	Representative of the Finance Committee	Voting Member
	Jeffrey Tubbs	Community Member with building design and/or construction experience	Voting Member
	Peter L'Hommedieu	Community Member with building design and/or construction experience	Voting Member
✓	Jeff Lundquist	Community Member with building design and/or construction experience	Voting Member
✓	Andrew Chagnon	Community Member with building design and/or construction experience	Voting Member
✓	Spencer Pollock	Parent Representative	Voting Member
	Adam Gaudette	Town Manager	Non-Voting Member
✓	Dr. Catherine Stickney	Superintendent of Schools	Non-Voting Member
	Steve Von Bargaen	Building Maintenance Local Official	Non-Voting Member
✓	Karlene Ross	Principal, W. Edward Balmer Elementary School	Non-Voting Member
✓	Jill Healy	Principal, Northbridge Elementary School	Non-Voting Member
	Kathleen Perry	Director of Pupil Personnel Services	Non-Voting Member
✓	Lee Dore	D & W, Architect	
	Don Walter	D & W, Architect	
	Jason Boone	D & W, Architect	
✓	Thomas Hengelsberg	D & W, Architect	
✓	Joel Seeley	SMMA, OPM	

Item #	Action	Discussion
13.1	Record	Call to Order, 6:40 PM, meeting opened.
13.2	Record	J. Strazzulla announced the meeting will be video and audio recorded with live broadcast and future re-broadcast.
13.3	Record	A motion was made by M. LeBrasseur and seconded by J. Marzec to approve the 10/3/2017 School Building Committee meeting minutes. Motion passed unanimous by those attending, one abstention.
13.4	J. Strazzulla J. Seeley	J. Seeley distributed and reviewed the updated Meetings and Agendas Schedule for the PSR Phase, attached. Committee Questions: 1. J. Healy indicated the parent conferences for Balmer and NES are scheduled for 12/6/2017. <i>J. Strazzulla and J. Seeley coordinate on an alternate date for Community Forum No. 5.</i>
13.5	L. Dore	L. Dore presented and reviewed the EUI for the existing Balmer (79.3) and NES (60.7) per the US EPA Preliminary Energy Target analysis, attached. The new building EUI is 36.4. Committee Discussion: 1. M. LeBrasseur asked if D&W will calculate the energy cost savings to operate the new facility as compared to the energy cost to operate the existing Balmer and NES? <i>J. Lundquist cautioned that there will most likely not be an energy cost savings due to the building being larger and having to provide today's code required ventilation which is most likely greater than provided with the current systems.</i> <i>L. Dore indicated D&W will provide the calculation in the Schematic Design Phase.</i>
13.6	T. Hengelsberg	T. Hengelsberg to develop a 5 year total cost of ownership to maintain the Balmer and NES as compared to the cost of a new building estimate, for Committee review.
13.7	T. Hengelsberg	T. Hengelsberg to develop a cost estimate to maintain both Balmer and NES for the additional period between a new building construction duration and a phased renovation construction duration for Committee review.
13.8	Record	T. Hengelsberg distributed and reviewed the minutes from the meeting with the Northbridge Police and Fire Departments held on 9/19/2017, attached.
13.9	Record	T. Hengelsberg scheduled the meeting with the Northbridge Safety Committee to be held at 10:00am on 11/8/2017.
13.10	T. Hengelsberg C. Stickney	T. Hengelsberg and C. Stickney to determine the amount of parent vehicles to be accommodated in the on-site vehicle queue length for parent drop-off/pick-up for the PreK-5 Options.
13.11	Committee	Committee members to develop a list of possible outcomes for the disposition of NES should a Grade PreK-5 option be the selected option.
13.12	T. Hengelsberg C. Stickney L. Dore	Middle School Capacity Analysis 1. T. Hengelsberg to confirm Case 1 – Move 5 th grade to elementary school, move Central Office to Middle School, is still achievable with a 1.70 efficiency factor.

Item #	Action	Discussion
		<ol style="list-style-type: none"> C. Stickney to provide a listing of the net spaces and their minimum sizes that currently occupy the 1905 Wing and L. Dore to re-evaluate Case 2 - Move 5th grade to elementary school, keep Central Office at 87 Linwood, take 1905 Wing off-line, with those spaces and determine if achievable.
13.13	T. Hengelsberg	T. Hengelsberg to provide copies of the PDP submission to the Committee. The District has received their copy and an electronic version has been posted on the project website.
13.14	J. Seeley	J. Seeley to develop a list of acronyms and definitions for PR Subcommittee distribution and posting on the Project Website.
13.15	C. Stickney A. Gaudette	<p>J. Seeley indicated Community-Wide Survey No. 1 is live on the Project Website. C. Stickney indicated the survey has been translated in several languages and hardcopies have been provided to the Library, Community Center, Senior Center and Town Hall. The school administration will send out an email notice to parents.</p> <p>A. Gaudette to post on the Town Website.</p>
13.16	Record	<p>J. Strazzulla provided an overview of the Joint Boards meeting held on 10/12/2017.</p> <p>Committee Discussion:</p> <ol style="list-style-type: none"> J. Marzec indicated the meeting was informative, with the boards asking good questions. He suggested future presentations emphasize the project timeline. S. Gogolinski indicated the Committee needs to plan for the 2018 fall Town Meeting and ballot vote. The fall Town Meeting typically occurs on the fourth Tuesday of October with the Article needing to be approved by the Selectmen in mid-August. The ballot vote should occur coincident with the State election on 11/6/2018. J. Strazzulla will schedule another Joint Boards meeting after the submission of the PSR.
13.17	Record	<p>The Project Goals from the 6/26/2017 Committee meeting were reviewed and updated as follows:</p> <p>All Options from the Feasibility Study are to:</p> <ol style="list-style-type: none"> Be approvable by MSBA and the residents of Northbridge Be Fiscally Responsible Be Cost Effective to Maintain and Operate Address the Needs of all Students including Full Accessibility Be Reflective and Supportive of the Curriculum Be developed thru a Collaborative Process and with Community Input Incorporate the Building and Site as a Learning Tool Incorporate Student Learning throughout the Design and Construction Process Be Community Friendly and Fully available for Community Use Be Safe and Secure Provide a variety of Flexible Educational Spaces for Present and Future Uses Be Sustainable and Energy Efficient

Item #	Action	Discussion
13.18	T. Hengelsberg L. Dore A. Chagnon	<p>T. Hengelsberg presented and reviewed the updated Design Options due to the surveyed wetland line, attached, as follows:</p> <ol style="list-style-type: none"> Option B2 – Grade 2-4 New Construction – Back/Side Option C2 – Grade PK-5 Renovation/Addition – Exist CR Wing Option C3 – Grade PK-5 New Construction – Back/Side Option C3A – Grade PK-5 New Construction – Back/Side Option C5 - Grade PK-5 New Construction - Front <p>Committee Discussion:</p> <ol style="list-style-type: none"> T. Hengelsberg to confirm if building height is exempted by the Dover Amendment. S. Pollock asked (prior meeting) if MA Natural Species has been contacted to confirm there are no impacts? <i>T. Hengelsberg indicated the environmental permitting consultant reviewed their on-line documents and found no impacts, but he will confirm that they will contact MA natural Species to confirm the findings.</i> J. Strazzulla asked if the building can be built in the 100 foot wetland buffer? <i>A. Chagnon indicated the building could potentially be located within the 100 foot buffer, but not within the 50 foot no disturb zone and Conservation Commission approval would be required. A. Chagnon will reach out to the Conservation Commission to schedule an informational meeting with them.</i> T. Hengelsberg will provide a chart defining the type and quantity of existing playfields at Balmer/Vail, the required parking for both the Grade 2-4 and PreK-5 Options and the parent vehicle queue length required for both. For each Option, the chart is to identify what has been provided. L. Dore indicated D&W will continue to refine the grade 2-4 Option and if a three story option provides for improved siting and site utilization, than D&W will explore. L. Dore indicated that D&W is developing Options that have the public spaces grouped at the building end versus in the building middle. J. Marzec asked if there will be a significant amount of blasting and ledge removal at the East property line, now that the buildings have shifted so near the East property line? <i>T. Hengelsberg indicated possibly, as the cut could be ten to fifteen feet, but no borings were taken in the woods in this area. Test pits will be taken in the Schematic Design phase to confirm the underlying soils makeup.</i> C. Stickney indicated the C2 Option layout does not meet the goals established in the educational visioning and program. J. Strazzulla asked how close is the new building to the existing building in Options B2, C3 and C3A? <i>T. Hengelsberg indicated within tens of feet and that he will provide examples of recent D&W projects that had similar distances.</i>

Item #	Action	Discussion
		<p>10. P. Bedigian asked if Option C5 would have a lower site cost due to the building not requiring such a significant cut along the East property line?</p> <p><i>T. Hengelsberg indicated possibly, but the baseball field will require a cut also.</i></p> <p>D&W to continue to refine the Options for further review.</p>
13.19	T. Hengelsberg	T. Hengelsberg distributed and reviewed the Flyer for Community Forum No. 4, to be held on 10/30/2017, attached. T. Hengelsberg to update with the correct URL for the Project Website and SBC email address.
13.20	Record	T. Hengelsberg distributed and reviewed a Project Information Handout for distribution at upcoming events, attached.
13.21	M. LeBrasseur	M. LeBrasseur to provide a listing of questions from Community Forum Nos. 1-3 that are to be added to the FAQ sheet.
13.22	Committee	J. Seeley distributed and reviewed the draft Community-Wide Survey No. 2 for Committee review, attached. The survey will be released by the first week of November and close by Thanksgiving.
13.23	Committee J. Strazzulla T. Hengelsberg	<p>The PR subcommittee update:</p> <ol style="list-style-type: none"> 1. M. LeBrasseur issued a Google.Docs PR Calendar for upcoming meetings/events and asked Committee members to sign-up to attend. 2. Committee members to provide a listing of any upcoming events to M. LeBrasseur that can be added to the PR Calendar. 3. J. Strazzulla to review next steps in raising the Seniors Tax Abatement to the maximum level. 4. J. Strazzulla to develop a generic calendar for press release issuances. 5. Census Mailing – 8 ½ x 11, black and white, Town-wide mailing in January, needs to be submitted to the Town Clerk by October 31. T. Hengelsberg to modify the Project Information Handout removing the SBC members list, prior dates, FAQ items 2, 3, 6, 7, 10 and 15. J. Strazzulla will provide direction on what costs to show, since the mailer has to be finalized prior to the PSR costs being developed.
13.24	Record	Public Comments - None
13.25	Record	Old or New Business – None
13.26	Record	Community Forum No. 4: October 30, 2017 at 6:00 pm at the Balmer Elementary School Library.
13.27	Record	Next SBC Meeting: November 7, 2017 at 6:30 pm at the High School Media Center
13.28	Record	A Motion was made by J. Marzec and seconded by S. Gogolinski to adjourn the meeting. No discussion, voted unanimously.

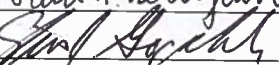
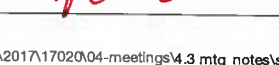
Attachments: Agenda, Updated Meetings and Agendas Schedule, EUI for the existing Balmer and NES, Northbridge Police and Fire Departments 9/19/2017 meeting minutes, Flyer for Community Forum No. 4, Project Information Handout, draft Community-Wide Survey No. 2, Powerpoint

The information herein reflects the understanding reached. Please contact the author if you have any questions or are not in agreement with these Project Minutes

PROJECT MEETING SIGN-IN SHEET

Project: W. Edward Balmer Elementary School Feasibility Study
 Prepared by: Joel Seeley
 Re: School Building Committee Meeting
 Location: High School Media Center
 427 Linwood Avenue, Whitinsville, MA
 Distribution: Attendees, (MF)

Project No.: 17020
 Meeting Date: 10/17/2017
 Meeting No: 13
 Time: 6:30pm

SIGNATURE	ATTENDEES	EMAIL	AFFILIATION
	Joseph Strazzulla	jstrazzulla@nps.org	Chairman, School Building Committee
	Melissa Walker	mwalker@nps.org	School Business Manager, MCPPO
	James Marzec	james.r.marzec@gmail.com	Member, Board of Selectmen, CEO
	Michael LeBrasseur	mlebrasseur@nps.org	Chairman, School Committee
	Paul Bedigian	bedigianps@cdmsmith.com	Representative of the Building, Planning, Construction Committee
	Steven Gogolinski	steve@gogolinskicpa.com	Representative of the Finance Committee
	Jeffrey Tubbs	jtubbs@charter.net	Member of community with architecture, engineering and/or construction experience
	Peter L'Hommedieu	PLHommedieu@shawmut.com	Member of community with architecture, engineering and/or construction experience
	Jeff Lundquist	jlundquist@therichmondgroup.com	Member of community with architecture, engineering and/or construction experience
	Andrew Chagnon	achagnon@vertexeng.com	Member of community with architecture, engineering and/or construction experience
	Spencer Pollock	spencerpollock22@gmail.com	Parent Representative
	Adam Gaudette	agaudette@northbridgemass.org	Town Manager
	Catherine D. Stickney	cstickney@nps.org	Superintendent of Schools, NPS
	Steve Von Bargaen	svonbargaen@nps.org	Building Maintenance Local Official
	Karlene Ross	kross@nps.org	Principal, W. Edward Balmer Elementary School
	Jill Healy	jhealy@nps.org	Principal, Northbridge Elementary School
	Kathleen Perry	kperry@nps.org	Director of Pupil Personnel Services
	Lee P. Dore	lpdore@DoreandWhittier.com	Dore & Whittier Architects
	Donald M. Walter	dwalter@DoreandWhittier.com	Dore & Whittier Architects
	Jason Boone	jboone@DoreandWhittier.com	Dore & Whittier Architects
	Thomas Hengelsberg	thengelsberg@DoreandWhittier.com	Dore & Whittier Architects
	Rani Philip	rphilip@DoreandWhittier.com	Dore & Whittier Architects
	Joel Seeley	jseeley@smma.com	SMMA

p:\2017\17020\04-meetings\4.3 mtg_notes\schoool building committee\13_2017_17october-schoolbuildingcommittee\schooolbuildingcommitteemeetingsign-in sheet_17october2017.docx

1000 Massachusetts Avenue
 Cambridge, MA 02138
 617.547.5400

www.smma.com

Agenda

Project:	W. Edward Balmer Elementary School Feasibility Study	Project No.:	17020
Re:	School Building Committee Meeting	Meeting Date:	10/17/2017
Meeting Location:	High School Media Center	Meeting Time:	6:30 PM
	427 Linwood Avenue, Whitinsville, MA	Meeting No.	13
Prepared by:	Joel G. Seeley		
Distribution:	Committee Members (MF)		

1. Call to Order
2. Approval of Minutes
3. Approval of Invoices and Commitments
4. Review PSR Phase Goals
5. Review PSR Phase Schedule
6. Review Joint Boards Meeting Findings
7. Review Updated Construction Options
8. Prepare for Community Forum No. 4
9. Community Survey No. 2
10. PR Subcommittee Update
 - Discussion about FAQ
 - Community Calendar
 - Upcoming Events for SBC Members
 - Census Mailing
11. New or Old Business
12. Committee Questions
13. Public Comments
14. Next Meeting:
 - November 7, 2017
15. Adjourn

1000 Massachusetts Avenue
Cambridge, MA 02138
617.547.5400

www.smma.com

W. Edward Balmer Elementary School Feasibility Study
Northbridge, Massachusetts

Project Goals from the June 26, 2017 SBC Meeting

All Options from the Feasibility Study are to:

1. Be Fiscally Responsible
2. Be Flexible
3. Be Cost Effective to Maintain and Operate
4. Address the Needs of the Students
5. Incorporate Community Input
6. Be Reflective of the Curriculum
7. Be developed thru a Collaborative Process
8. Incorporate the Building and Site as a Learning Tool
9. Be not Overly Complicated to Operate
10. Incorporate student learning throughout the Design and Construction Process
11. Be Community Friendly
12. Be Safe and Secure

SCHOOL BUILDING COMMITTEE
W. EDWARD BALMER ELEMENTARY SCHOOL

All meetings held at the
High School Media Center at 6:30 PM
unless otherwise noted

MEETINGS SCHEDULE AND AGENDAS
August 29, 2017 Updated October 13, 2017

DATE	AGENDA
<i>Feasibility Study Phase (PSR)</i>	
October 12, 2017	JOINT MEETING OF BOARD OF SELECTMEN, SCHOOL COMMITTEE, FINANCE COMMITTEE AND SCHOOL BUILDING COMMITTEE - 7:00 PM - W. EDWARD BALMER ELEMENTARY SCHOOL MEDIA CENTER
October 17, 2017	SCHOOL BUILDING COMMITTEE MEETING Review Preferred Alternative Goals Update on Construction Alternatives Prepare for Community Forum
October 30, 2017	COMMUNITY FORUM NO. 4 - 6:00 to 8:00 PM - W. EDWARD BALMER ELEMENTARY SCHOOL LIBRARY
November 7, 2017	SCHOOL BUILDING COMMITTEE MEETING Review Community Forum Comments Update on Construction Alternatives Structural Narrative Review MEP Systems Narrative Review Review MSBA Comments on PDP Submission Review Construction Delivery Methods
November 21, 2017	SCHOOL BUILDING COMMITTEE MEETING Update on Sustainable Design Goals Update on Construction Alternatives Preliminary Options Evaluation Review Construction Delivery Method Prepare for Community Forum
December 5, 2017	SCHOOL BUILDING COMMITTEE MEETING Update on Construction Alternatives Review Cost Models Options Evaluation Discuss the One Preferred Option
December 6, 2017	COMMUNITY FORUM NO. 5 - 6:00 to 8:00 PM - NORTHBRIDGE ELEMENTARY SCHOOL CAFETERIA
December 19, 2017	SCHOOL BUILDING COMMITTEE MEETING Decide the One Preferred Construction Alternative Vote to Submit Preferred Schematic Report to MSBA
January 3, 2018	SUBMIT PREFERRED SCHEMATIC REPORT PACKAGE TO MSBA
	ADDITIONAL MEETINGS TO BE SCHEDULED

MEETING MINUTES – Public Safety 1



DORE & WHITTIER
ARCHITECTS, INC.

DATE OF MEETING: September 19, 2017

PROJECT: W. EDWARD BALMER ES FEASIBILITY STUDY

PROJECT NO.: 17-0759

SUBJECT: Meeting with Northbridge Fire and Police Chiefs

ATTENDING: Walter Warchol – NPD Chief
Dave White – NFD Chief
Catherine Stickney – Superintendent, NPS (partial)
Lee Dore – PIC, DWA
Tom Hengelsberg – PM, DWA
Joel Seeley – SMMA (OPM)

ITEM	MINUTES	ACTION/ WHO	STATUS/ DATE
01-1	This meeting was intended to be a meet-and-greet with Chief Warchol and Chief White to introduce them to the team, get them up to speed on the project, open lines of communication, and get their initial reactions to the preliminary planning and Options underway.		Closed
01-2	Joel explained to the chiefs where the project is in the process, that the Balmer site had been chosen as the primary study site, and what is coming next in the process, generally. The two study enrollments are grades 2-4 (510) and PK-5 (1030).		Closed
01-3	It was noted that the Balmer School was originally built as an Upper Elementary/ Middle School.		Closed
01-4	Some present features and constraints of the Balmer site were noted: <ul style="list-style-type: none"> • One way in/out for vehicles • Not full perimeter access around the building for emergency vehicles • Building is located in the center/rear of the site – neither good nor bad 		Closed
01-5	Lee and Tom presented the five site plan options under consideration, and pointed out the major features of each.		Closed
01-6	The chiefs made the following observations: <ul style="list-style-type: none"> • Connection to North Main seen as a potential liability <ul style="list-style-type: none"> ○ Policing difficulties: even if lit, it might be hard to supervise, might attract underage drinking crowd. ○ Steep grade is difficult 	DWA to continue study of N Main connection and grades, incorporate lighting, and	Open

ARCHITECTS
PROJECT MANAGERS

260 Merrimac Street Bldg 7
Newburyport, MA 01950
978.499.2999 ph
978.499.2944 fax

212 Battery Street
Burlington, VT 05401
802.863.1428 ph
802.863.6955

www.doreandwhittier.com

	<ul style="list-style-type: none"> ○ Tight squeeze between existing houses ○ Exiting onto N Main could be hazardous – limited sight distance? • Loop road around school is a must-have • Front options are generally less preferred due to: <ul style="list-style-type: none"> ○ lack of complete circulation around the building ○ lack of ability to see the whole site and approaches from the admin office suite ○ proximity of play fields to Crescent Street – exposure of children to activities on the street 	include loop road going forward. Grades, turning radii, and turning movements of access will be studied.	
01-7	Cathy pointed out importance of loop road design in some options to drop-off queue length. There was discussion about avoiding queues that extend off the property into Crescent Street, which apparently has happened on occasion. Later it was again stressed that queue length is critical.	DWA to continue study of drop-off queue lines going forward.	Open
01-8	Chief White stated the height of the FD's tallest ladder truck is 48 feet, which must be able to access the roof of a new school. This will be a factor in the final permitting of the allowable height of the building. DWA and Nitsch (civil engineer) will obtain apparatus dimensions and run turning radii models as site plan develops.	Design team to consider these factors in further design.	Open
01-9	Chief Warchol mentioned that there is a Town Safety Committee which meets monthly, which has representatives from all town committees, and it would be a good idea to bring the project for review before this committee at a next logical juncture in the schedule.	DWA agrees and will set up meeting with Safety Comm.	Open
01-10	Water pressure should be good in the street – Chief White thought it was around 120 PSI with sufficient volume.	DWA will set up flow test with FP engineer witnessing.	Open
01-11	Chief Warchol suggested lighting and cameras covering all site walks will be a good idea.	DWA to incorporate to extent possible.	Open
01-12	Chief Warchol will be very interested to review interior safety measures as the design develops.		Open
01-13	Chief White will be interested to see development of exit routes for children onto fields for fire drills and real events. There needs to be a clear, safe circulation route to the designated secondary emergency shelter, which is the Armory on Lake Street.	Design team to consider these factors in further design.	Open
01-14	Both chiefs prefer the site design feature where the proposed secondary entrance drive is lined up with Lake Street, not pushed over to the east property line and misaligned with that intersection.	DWA to incorporate.	Open
01-15	Traffic volume vis-à-vis front of site options B3 and C5 were discussed. Crescent Street is a commuter cut-through and can be busy. The larger enrollment will only increase traffic. Cathy observed that there may be some doubling-up of car trips, as	Design team to further study traffic in next phases of the project	Open

	parents who drop at both schools now will only be making one trip to one consolidated school.	with detailed counts.	
01-16	Active Shooter scenarios briefly discussed. Armory would be safe location for evacuation scenario—this would not change with 1,030 enrollment. Chief Warchol likes compartmentalized design for lockdown scenario, as already shown in all options. Warchol liked the sally-port entrance design into the building. Lee Dore explained that with electronic locking controls, a Panic mode and Alarm mode would be possible to incorporate. All agreed it will be important to build these devices and features into the project from the start as opposed to trying to add them in later.	DWA to continue development of security protocol with building design development.	Open
01-17	Public Safety Committee meeting will be next stop to continue discussion of public safety issues.	DWA to set up mtg.	Open

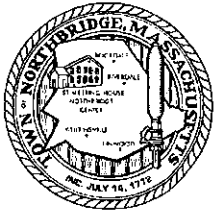
The above is intended to be an accurate summation of this meeting. Please contact me with any additions, deletions, and/or corrections, for incorporation into these minutes. After 10 days, we will accept these minutes as an accurate summary of our discussion and enter them into the permanent record of the project.

Sincerely,

DORE & WHITTIER ARCHITECTS, INC.
 Architects ■ Project Managers

Tom Hengelsberg, AIA
 Project Manager

c: Attendees
 File



The Northbridge Public Schools Town of Northbridge

87 Linwood Avenue, Whitinsville, Massachusetts 01588 (508) 234-8156 FAX (508) 234-8469 www.nps.org

Dr. Catherine Stickney, Superintendent
Kathleen Perry, Director of Pupil Personnel Services

Amy McKinstry, Director of Curriculum
Melissa Walker, Business Manager

REVISED September 12, 2017

Ms. Elena Seiti, Project Coordinator
Massachusetts School Building Authority
40 Broad Street, 5th Floor
Boston, Massachusetts 02109

SEP 26 2017

Dear Ms. Seiti:

In accordance with 963 CMR 2.00, attached for your review and approval is the membership of the School Building Committee for the W. Edward Balmer Elementary School located in the Town of Northbridge. The Committee was formed in accordance with the provisions of all applicable statutes, local charters, by-laws and agreements of the Town of Northbridge. Committee Members include the following:

Designation	Name and Title	Address	Email Address and Phone Number	Voting Member?
CHAIR OF SCHOOL BUILDING COMMITTEE	Joseph Strazzula, School Committee Member	170 Rebecca Rd. Whitinsville, MA 01588	jstrazzula@nps.org 508-942-9930	Yes
SBC member who is MCPPO certified*	Melissa Walker School Business Manager	87 Linwood Ave. Whitinsville, MA 01588	mwalker@nps.org 508-234-8156	Yes
Local Chief Executive Officer Representative of Office authorized by law to construct school buildings	James Marzec Chairman, Board of Selectmen	221 Samuel Dr. Whitinsville, MA 01588	james.r.marzec@gmail.com 617- 669-0482	Yes
Administrator or Manager ¹	Adam Gaudette Town Manager	7 Main St. Whitinsville, MA 01588	agaudette@northbridgemass.org 508-234-2095	No
School Committee Member	Michael LeBrasseur	295 Hillcrest Rd. Whitinsville, MA 01588	mlebrasseur@nps.org 508-353-9345	Yes
Superintendent of Schools	Dr. Catherine Stickney	87 Linwood Ave. Whitinsville, MA 01588	cstickney@nps.org 508-234-8156	No
Local Official responsible for Building Maintenance	Steven Von Barga Dir. Of Facilities	87 Linwood Ave. Whitinsville, MA 01588	svonbarga@nps.org 508-234-8156	No

Excellence - Accountability - Collaboration: "Every Student, Every Classroom, Every Day"

It is the policy of the Northbridge Public Schools not to discriminate on the basis of race, color, gender, religion, national origin, sexual orientation, gender identity, disability, age, or homelessness in its educational programs, services, activities, or employment.

Members of community with architecture, engineering and/or construction experience	Paul Bedigian, Representative of the Building, Planning, Construction Committee	25 June St. Northbridge, MA 01534	bedigianps@cdmsmith.com 508-234-0264	Yes
School Principal	Karlene Ross W. Edward Balmer Elementary	21 Crescent St. Whitinsville, MA 01588	kross@nps.org 508-234-8161	No
School Principal	Jill Healy Northbridge Elementary School	30 Cross St. Whitinsville, MA 01588	jhealy@nps.org 508-234-6346	No
Local budget official or member of local finance Committee	Steven Gogolinski Representative of the Finance Committee	442 Douglas Rd. Whitinsville, MA 01588	steve@gogolinskicpa.com 508-344-0909	Yes
Member Knowledgeable in educational mission and function of facility	Kathleen Perry Director of Pupil Personnel Services	87 Linwood Ave. Whitinsville, MA 01588	kperry@nps.org 508-234-8156	No
Members of community with architecture, engineering and/or construction experience	Jeffrey Tubbs	244 Brookway Dr. Northbridge MA 01534	jtubbs@charter.net 617-851-7960	Yes
Members of community with architecture, engineering and/or construction experience	Peter L'Hommedieu	112 Rumonoski Dr. Northbridge, MA 01534	PLHommedieu@shawmut.com 617-719-2744	Yes
Members of community with architecture, engineering and/or construction experience	Jeff Lundquist	20 Hastings Dr. Whitinsville, MA 01588	jlundquist@therichmondgroup.com 774-278-1592	Yes
Members of community with architecture, engineering and/or construction experience	Andrew Chagnon	85 Green Meadow Ct. Whitinsville, MA 01588	AChagnon@parecorp.com 774-280-0163	Yes
Parent Representative	Spencer Pollock	328 Rebeeca Rd. Whitinsville, MA 01588	spencerpollock22@gmail.com 508-367-6123	Yes

Listed below is the past performance of the school building committee, the building committee (temporary or permanent), or any other committee responsible for oversight, management, or administration of the construction of public buildings and its individual members:

When the 2001 Northbridge High School was constructed, a school building committee had been in place, however, upon completion of that project, the committee was disbanded.

The Town of Northbridge has a standing Building, Planning and Construction Committee. The Building, Planning and Construction Committee is responsible for surveying the growth needs of the Town, the needs of the community and the physical condition of all municipal buildings and other facilities. The Committee shall meet from time to time with representatives of all municipal

Excellence - Accountability - Collaboration: "Every Student, Every Classroom, Every Day"

It is the policy of the Northbridge Public Schools not to discriminate on the basis of race, color, gender, religion, national origin, sexual orientation, gender identity, disability, age, or homelessness in its educational programs, services, activities, or employment.

agencies to determine the need for additions or renovations to any existing buildings or for the construction of new buildings or any other facilities for the Town, and to determine the appropriate sites for such buildings and facilities. A representative of the Building, Planning, and Construction Committee is named above as a voting member of the School Building Committee.

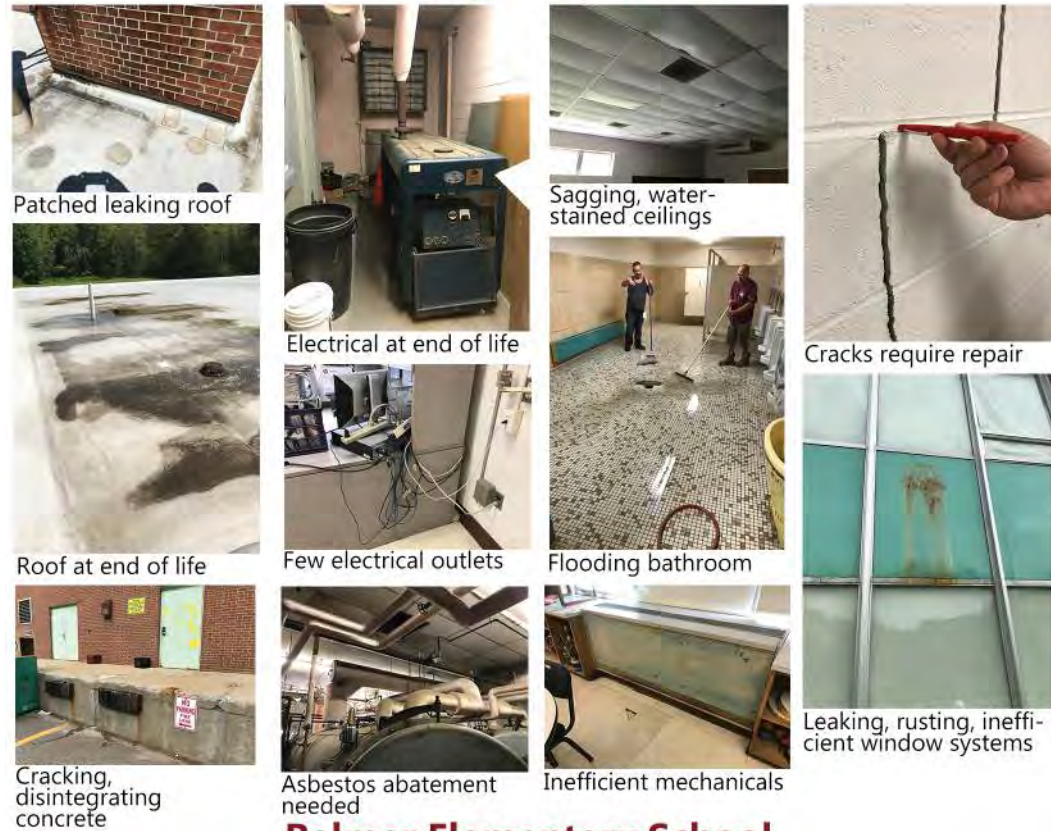
After approval of this committee by the Authority, the Town of Northbridge will notify the Authority in writing within 20 calendar days of any changes to the membership or the duties of said committee.

Authorized Signature for the Town of Northbridge on File

 10/3/17
Approved by MSBA Date

ⁱ Please attach the certification from the Office of the Inspector General demonstrating completion of the MCPPO Program.
ⁱⁱ "Administrator or Manager" refers to a Town Administrator, Town Manager, or to an equivalent position.

THE NEED Existing Conditions



Balmer Elementary School



Northbridge Elementary School

School Building Committee Members

Voting Members

Joseph Strazzulla, Chairman, School Building Committee
 Melissa Walker, School Business Manager
 James Marzec, Representative of the Board of Selectmen
 Michael LeBrasseur, Chairman, School Committee
 Paul Bedigian, Representative of the Building, Planning, Construction Committee
 Steven Gogolinski, Representative of the Finance Committee
 Jeffrey Tubbs, Community Member
 Peter L'Hommedieu, Community Member
 Jeff Lundquist, Community Member
 Andrew Chagnon, Community Member
 Spencer Pollock, Parent Representative

Non-Voting Members

Adam Gaudette, Town Manager
 Dr. Catherine Stickney, Superintendent of Schools
 Steve Von Borgen, Building Maintenance Local Official
 Karlene Ross, Principal, W. Edward Balmer Elementary School
 Jill Healy, Principal, Northbridge Elementary School
 Kathleen Perry, Director of Pupil Personnel Services

Architect & Owner's Project Manager

Lee Dore, Dore & Whittier Architects, Inc.
 Donald Walter, Dore & Whittier Architects, Inc.
 Jason Boone, Dore & Whittier Architects, Inc.
 Thomas Hengelsberg, Dore & Whittier Architects, Inc.
 Joel Seeley, SMMA

Next Steps

School Building Committee (SBC) meetings are every two weeks. Agendas are posted on the District's website.

Sept/Oct 2017	SBC to select top 3 options and vote to submit PDP to MSBA
Oct 6, 2017	Submit Preliminary Design Program (PDP) to MSBA
Oct 30, 2017	Community Forum #4 at Balmer Cafeteria
Dec 5, 2017	Community Forum #5 at NES Library
Jan 3, 2018	Submit Preferred Schematic Report (PSR) to MSBA
May 9, 2018	Submit Schematic Design (SD) documents to MSBA
June 27, 2018	MSBA board meeting to approve project to bring to voters
Fall 2018	Town Vote



W. EDWARD BALMER SCHOOL



Massachusetts School Building Authority
 Funding Affordable, Sustainable, and Efficient Schools in Partnership with Local Communities

Questions and comments: sbc@nps.org
 Additional information: www.nps.org/sbc

 New  Renovation

NORTHBRIDGE PUBLIC SCHOOLS
W. EDWARD BALMER SCHOOL

Join us for our fourth community meeting on

October 30, 2017

*To learn about progress and share your thoughts on
a new or renovated school project!*

We want to hear from you!

QUICK RECAP

Catch up on what you might have missed:

- Condition of the Facilities
- Space Needs
- Educational Needs & Vision
- Site and Building Diagrams
- Project Costs

REVIEW

Design Alternatives:

- Review refinements to the design alternatives selected for further study

SHARE YOUR THOUGHTS

Community-wide survey:

- Discuss results

Process and Schedule

Schedule and MSBA process:

- Learn about the timeline and upcoming steps in the MSBA process
- PSR submission



MEETING LOCATION: Balmer Elementary School Library

21 Crescent Street, Whitinsville

October 30 - 6:00 – 8:00 PM

CHILD CARE WILL BE PROVIDED

Project Website: <https://www.nps.org/w-edward-balmer-school-building-project> Project Email: BalmerSBC@smma.com

SPONSORED BY THE BALMER SCHOOL BUILDING COMMITTEE

SMMA – Owner's Project Manager

Dore & Whittier Architects

IN PARTNERSHIP WITH THE MASSACHUSETTS SCHOOL BUILDING AUTHORITY

W. Edward Balmer Elementary School Feasibility Study

School Building Committee Community Survey No. 2

October 17, 2017

As the School Building Committee prepares its recommendation for a Preferred Schematic Design to the Massachusetts School Building Authority, it is important that we hear from you.

Please complete the following short survey; the results will help guide the decision-making process as the School Building Committee continues its important work.

1. Please select all stakeholder groups that apply to you.

- ☐ Student
- ☐ Parent
- ☐ Northbridge Resident
- ☐ Northbridge Registered Voter
- ☐ Northbridge Homeowner
- ☐ Northbridge Business Owner
- ☐ Northbridge Elected Official
- ☐ Northbridge Public Schools Employee
- ☐ Other (please specify) _____

2. Please rank your priority from the choices below with 1 being the most important.

- ☐ Cost – Minimal impact on taxpayer
- ☐ Education – The greatest benefit to all learners

3. Which of the following design alternatives provides the Northbridge Community the best long term plan for educating its elementary school children? Please rank the following options with 1 being the best long term solution and 4 being the least.

	Option B2 (Grades 2-4, 510 students) Renovation and addition to the W. Edward Balmer Elementary School at \$34.6 M Northbridge Dollars, Northbridge Elementary School to remain as-is.
	Option C2 (Grades PreK-5, 1,030 students) Renovation and addition to the W. Edward Balmer School at \$55.6 M Northbridge Dollars, consolidating W. Edward Balmer School and Northbridge Elementary School.
	Option C3 (Grades PreK-5, 1,030 students) New Construction to the rear of the W. Edward Balmer Elementary School campus at \$58.9 M Northbridge Dollars, consolidating W. Edward Balmer Elementary School and Northbridge Elementary School.
	Option C5 (Grades PreK-5, 1,030 students) New construction to the front of the W. Edward Balmer Elementary School campus at \$58.3 M Northbridge Dollars, consolidating W. Edward Balmer Elementary School and Northbridge Elementary School.

W. Edward Balmer Elementary School Feasibility Study

School Building Committee Community Survey No. 2

October 17, 2017

- 4. What other information will be pertinent to the recommendations of the Northbridge School Building Committee?**

--

DRAFT

W. EDWARD BALMER SCHOOL

FEASIBILITY STUDY

NORTHBRIDGE, MA

School Building Committee
Meeting

OCTOBER 17, 2017



Massachusetts School Building Authority
Funding. Affordable. Sustainable. and Efficient Schools in Partnership with Local Communities



- 
- 1. Revisit Project Goals**
 - 2. Green and Sustainable Strategies Update**
 - 3. Selected Design Alternatives Progress Update**
 - 4. Questions, Comments, Feedback**

PROJECT GOALS

from the June 26, 2017 SBC Meeting

All Options from the Feasibility Study are to:

- incorporate MSBA standards
- be fiscally responsible
- be flexible for present and future needs
- be cost effective to maintain and operate
- address the needs of all students, including complete accessibility
- incorporate collaborative community input
- be reflective and supportive of the curriculum
- incorporate values of sustainability and efficiency
- incorporate the building and site as a learning tool
- incorporate student learning throughout the design and construction process
- be supportive of community use
- be safe and secure
- include a variety of flexible educational spaces

revisit goals



GREEN & SUSTAINABLE STRATEGIES

US EPA- Preliminary Energy Target



Building Characteristics Assumptions				
City: Northbridge			State: MA	
Space Type	Gross Floor Area	Number of Students	Number of Workers	Months in use
K-12 School	173,000 *	1030	165	12 (assumed)
	Wkend Operation	Cooking Facilities	% Heated	% Cooled
	No	Yes	100	50

ENERGY TARGETS (1)				
Energy Performance Rating	50 (Median)	90	95	100
Energy Use Reduction (%)	0%	38.0%	45.9%	61.8%
Source Energy Use Intensity (kBtu/sf/yr)	107.1	66.5	57.9	40.9
Site Energy Use Intensity (kBtu/sf/yr)	67.3	41.7	36.4	25.7
Total Annual Source Energy (MBtu)	18,534	11,497	10,019	7,075
Total Annual Site Energy (MBtu)	11,641	7,221	6,293	4,444
Energy Cost Reduction (%)	0%	38.0%	45.9%	61.8%
Total Annual Energy Cost (\$)	\$ 216,577	\$ 134,350	\$ 117,078	\$ 82,675
Δ (change in energy cost)	n/a	\$ (82,227)	\$ (99,499)	\$ (133,902)
co2 Emissions (Metric Tons CO2e /yr)	689.5	427.7	372.7	263.2
Δ (change in CO2 emission)	n/a	(262)	(317)	(426)
CO2 Emissions Reduction (%)	0%	38.0%	45.9%	61.8%

* Assumes [26]% electricity and [74]% natural gas. Baseline Energy Star Median / CBECS data.

*Larger PK-5 building option shown; smaller option similar

MSBA Requirements

- Minimum Energy Performance Rating = 95
- Translates to Energy Use Intensity (EUI) of mid-30's
- Recent D&W project: EUI 37.7

green strategies



Comparison of Proposed to Existing Energy Targets



PROPOSED:

- Minimum Energy Performance Rating = 95
(Meaning: this building preforms in the 95th percentile of similar existing K-12 school buildings in the nationwide EPA database)
- Translates to Energy Use Intensity (EUI) of 36.4

EXISTING (calculated using last three years of utility data):

- Balmer: Energy Use Intensity (EUI) of 79.3
- NES: Energy Use Intensity (EUI) of 60.7
- Benchmark EPR of 50th percentile ~ EUI of 62.1

green strategies



SELECTED DESIGN ALTERNATIVES

A photograph of a large, multi-story stone building, likely a historic structure, featuring a prominent tower with a dome and a weather vane. The building has numerous windows and a gabled roof. The image is overlaid with a reddish-pink color filter. The sky is filled with clouds.

PROGRESS UPDATE



B1 \$29.0M



B2 \$34.6M



C1 \$61.3M



C3 \$58.9M



B3 \$33.8M



C2 \$55.6M



C4 \$66.6M



C5 \$58.3M

GROUP A
Balmer + NES
CODE/ DM
ONLY
\$53.0M
total

OPTIONS OVERVIEW WITH COST TO TOWN

Estimated costs are preliminary and subject to change as the project is refined.

options evaluation





B1 \$29.0M



B2 \$34.6M



C1 \$61.3M



C3 \$58.9M



B3 \$33.8M



C2 \$55.6M



C4 \$66.6M



C5 \$58.3M

GROUP A
Balmer + NES
CODE/ DM
ONLY
\$53.0M
total

OPTIONS OVERVIEW WITH COST TO TOWN

Estimated costs are preliminary and subject to change as the project is refined.

options evaluation



OPTION B2

- 2-4 (510)
- NEW CONSTRUCT.
- 2 STORIES
- REAR/EAST EDGE OF SITE
- 2 YEAR DURATION



preliminary design



OPTION C2

- PK-5 (1,030)
- ADD/RENO
- 2 STORY ADDITIONS
- EXISTING SITE
- 4 YEAR DURATION



preliminary design



OPTION C3

- PK-5 (1,030)
- NEW CONSTRUCT.
- 3 STORIES
- REAR/EAST EDGE OF SITE
- 3 YEAR DURATION



preliminary design



OPTION C3a

- PK-5 (1,030)
- NEW CONSTRUCT.
- 3 STORIES
- REAR/EAST EDGE OF SITE
- 3 YEAR DURATION



preliminary design



OPTION C5

- PK-5 (1,030)
- NEW CONSTRUCT.
- 3 STORIES
- FRONT OF SITE
- 3 YEAR DURATION



preliminary design





QUESTIONS?



NEXT STEPS

- Continue to refine building plan diagrams with Working Group, using the Education Plan and Space Summary Program.
- October 12-26, 2017 – Survey #1 issued
- October 30, 2017 – Community Forum #4 at Balmer ES Library
- November , 2017 - Survey #2 issued
- December 6, 2017 – Community Forum #5 at NES Cafeteria
- January 3, 2018 – Submit Preferred Schematic Report (PSR) to MSBA
- May 9, 2018 - Submit Schematic Design (SD) documents to MSBA
- June 27, 2018 – MSBA board meeting to approve project to bring to voters
- Fall 2018 – Town Vote



THANK YOU



DORE & WHITTIER
ARCHITECTS, INC.